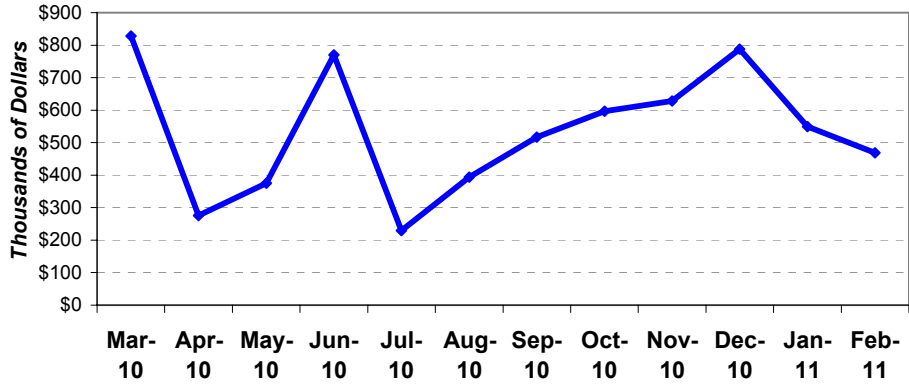


PROVIDER MEDICAL REVIEW SECTION

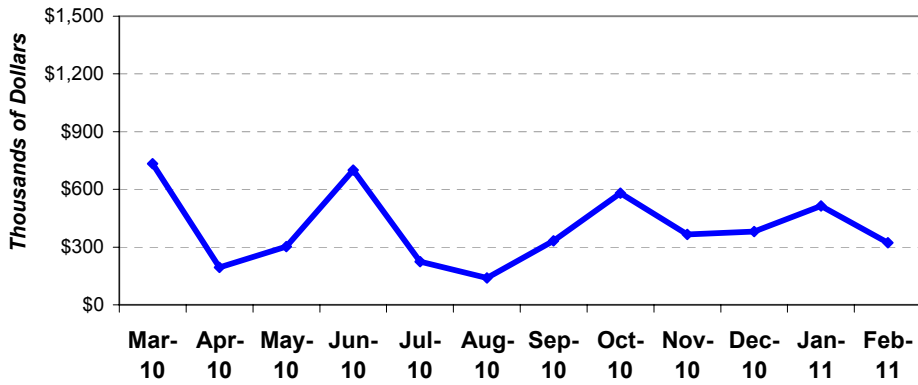
PROVIDER MEDICAL REVIEW SECTION - Recoupments: Last 12 months

The amounts include cases performed by Provider Medical Review staff, provider self-audits and CCME (contractor) reviews.



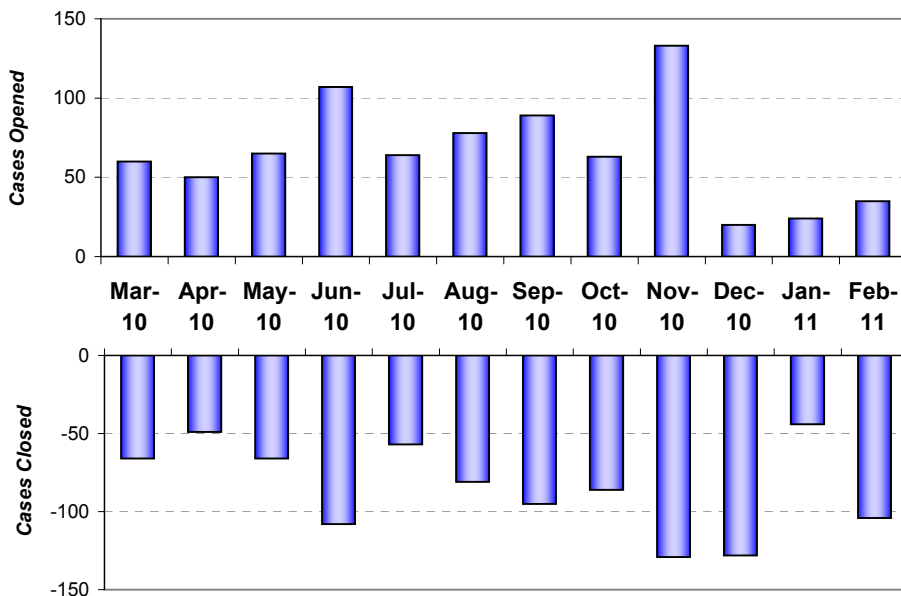
PROVIDER MEDICAL REVIEW SECTION - Contractor Recoupments: Last 12 months

The graph compares the total dollars recouped by CCME, the post-payment contractor for DRG reviews, by month for the most recent twelve months.



PROVIDER MEDICAL REVIEW SECTION - Number of cases opened and closed: Last 12 months

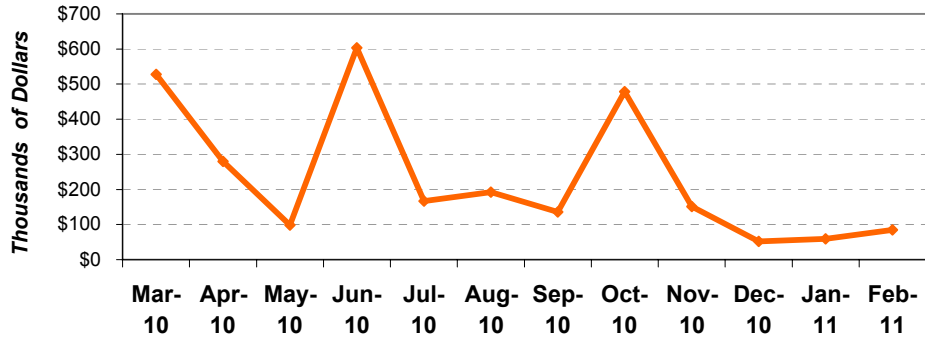
Cases include those reviewed by staff, providers by self-audit and CCME.



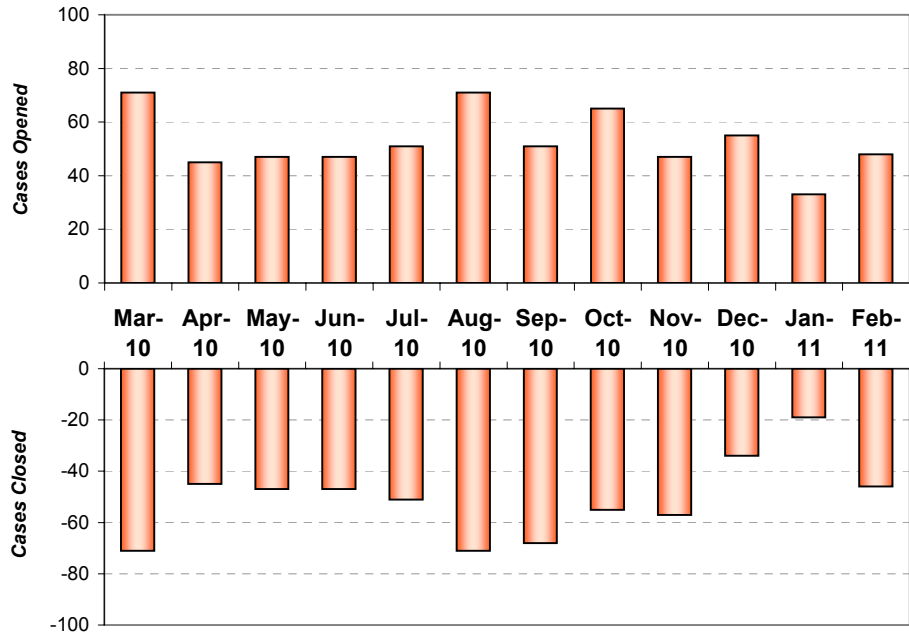
PHARMACY REVIEW SECTION

The Pharmacy Review Section consists of pharmacists, investigators and processing assistants, performing post-payment reviews on claims billed through both chain and independent retail pharmacies.

PHARMACY REVIEW SECTION - Recouments: Last 12 months

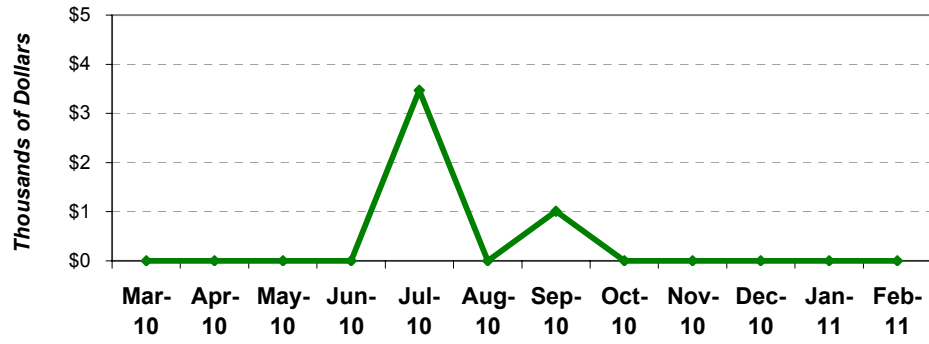


PHARMACY REVIEW SECTION - Number of cases opened and closed: Last 12 months

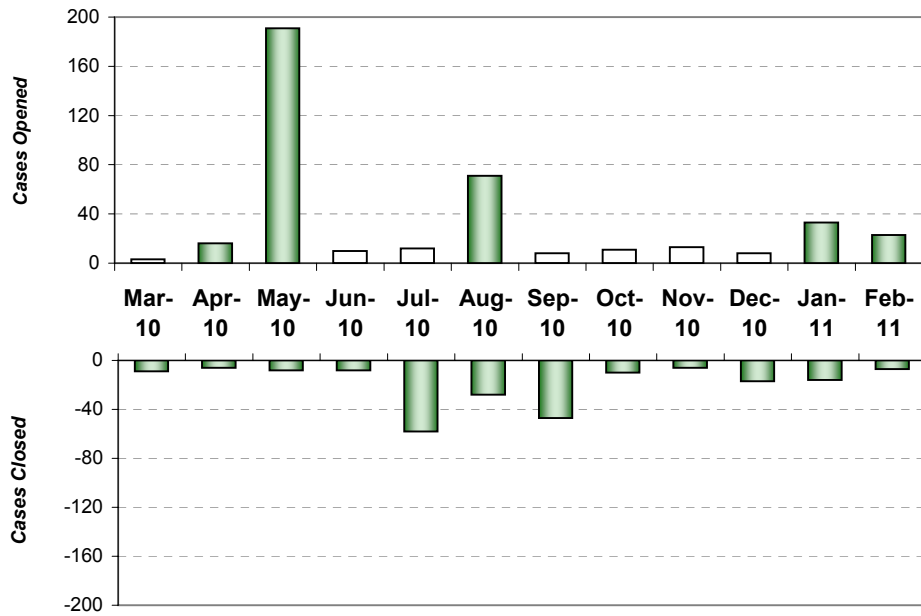


SPECIAL PROJECTS SECTION

SPECIAL PROJECTS REVIEW SECTION - Recoupments: Last 12 months

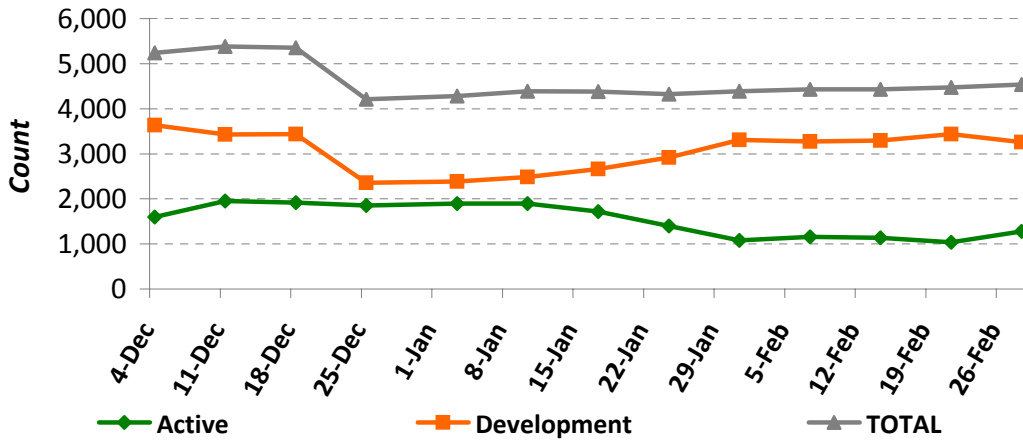


SPECIAL PROJECTS REVIEW SECTION - Number of cases opened and closed: Last 12 months

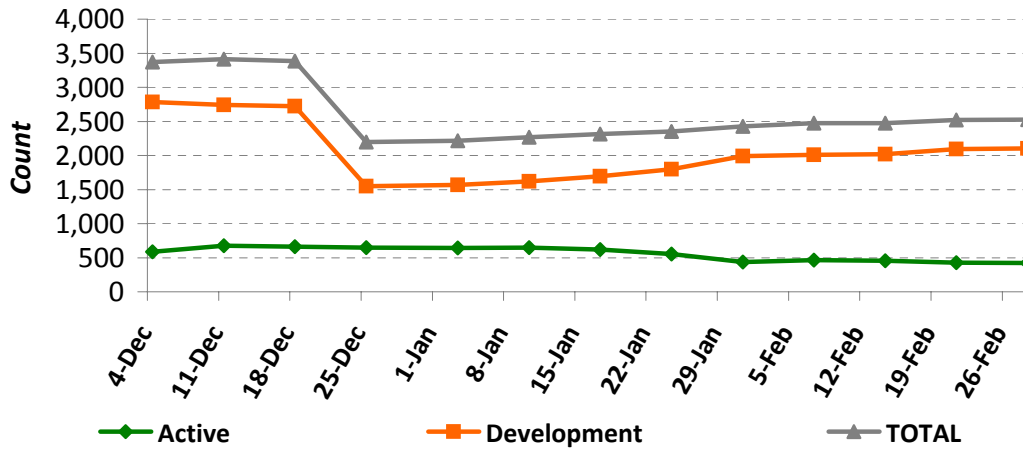


Total Inventory - Provider Applications (physician, facility, nursing home, etc.)

'Active' = in house & being worked on by CSC ; 'Development' = application incomplete & suspended until provider respond;



Inventory - Web



Inventory - Paper

