

**NC Department of Health and Human Services**

**Division of Mental Health, Developmental Disabilities, and Substance Use Services**

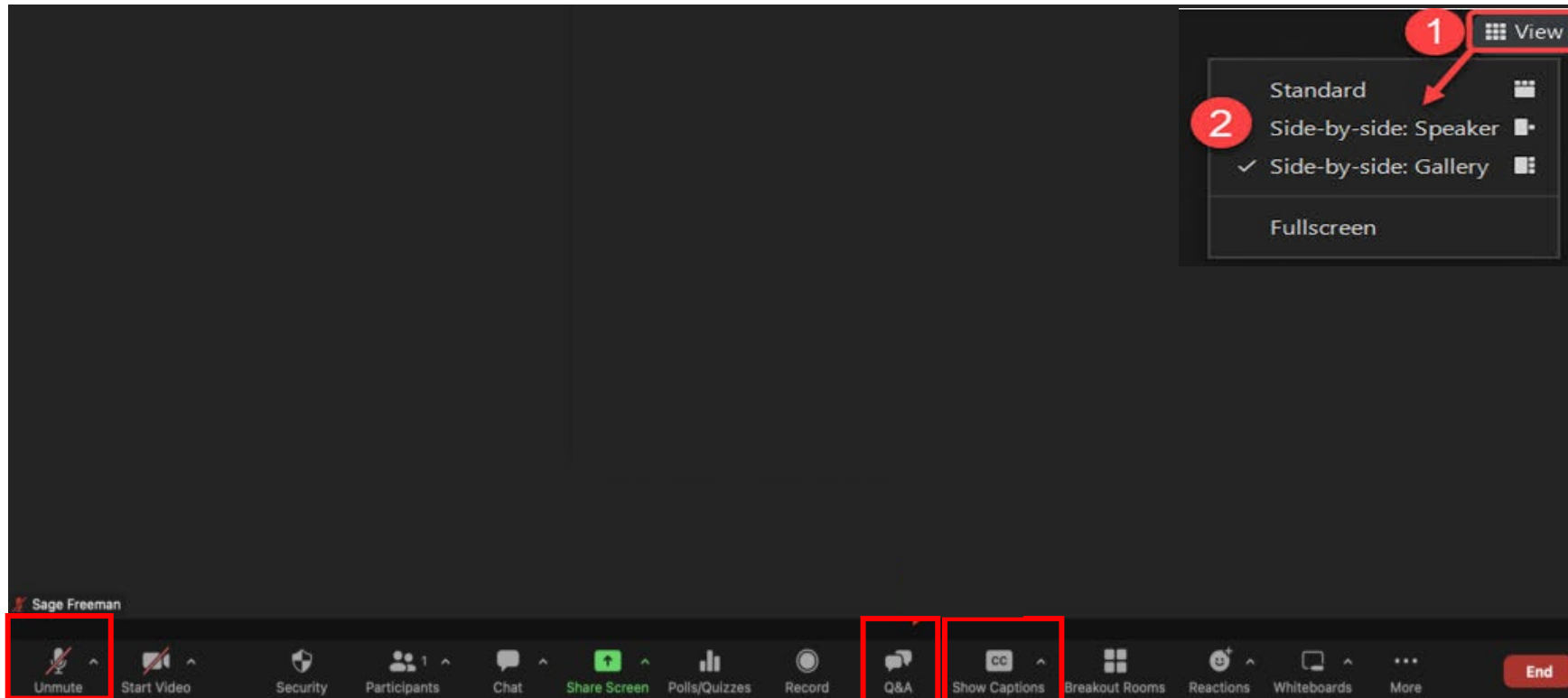
# **Accessing Community-Based Services through 1915(i)**

**Kelly Crosbie, MSW, LCSW, DMH/DD/SUS Director**

**Ginger Yarbrough, Director of I/DD, TBI, & Olmstead Section**

**July 8, 2024**

# Housekeeping



To adjust video layout:  
Select the "View"  
feature located in the  
top-right hand corner of  
your screen

Mute your microphone for the duration of  
the call unless you are speaking or asking  
questions

Questions can be submitted during the  
presentation using the "Q&A" box button  
on the control panel

ASL Interpreters and Closed-Captioning options are available:  
Select "Closed/Show Captions"

Habr  interpretes de ASL y opciones de subt tulos disponibles:  
seleccione la funci n "Subt tulos"

# Agenda

- 1. Introductions**
- 2. MH/SU/IDD/TBI System Announcements & Updates**
- 3. Accessing Community Based Services through 1915(i)**
- 4. Q&A**

# Our Presenters



**Kelly Crosbie, MSW, LCSW,  
DMH/DD/SUS Director**

- 30 years in MH/SU/IDD Field
- 13 years in DHHS
- DMHDDSUS since Dec 2022
- Licensed Clinical Social Worker (LCSW)
- Person with lived experience



**Ginger Yarbrough, MPA, CPHQ, NADD-DDS  
DMH/DD/SUS IDD,TBI & Olmstead Director**

- 24 years in IDD/TBI and dual diagnosis (DD& MH) field
- Experience as a Direct Support Professional, Care Manager, and Quality Management
- DMHDDSUS since March 2023



NC DEPARTMENT OF  
**HEALTH AND  
HUMAN SERVICES**

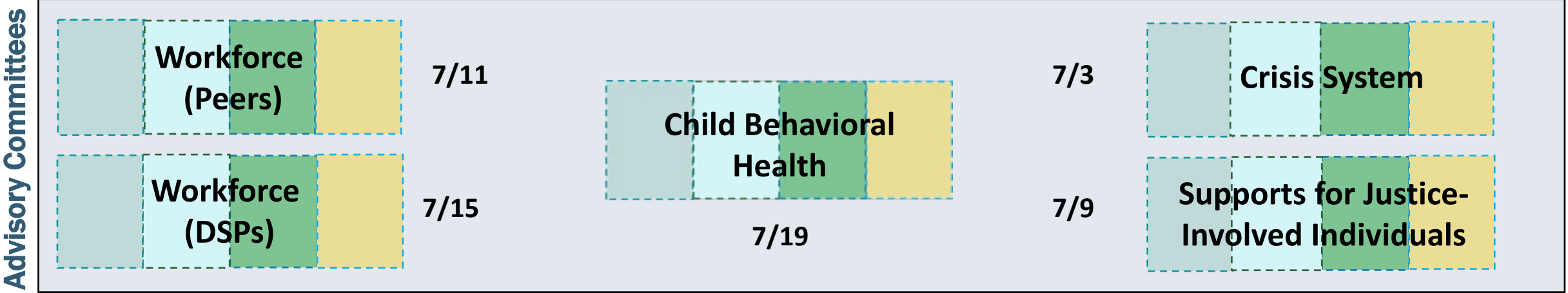
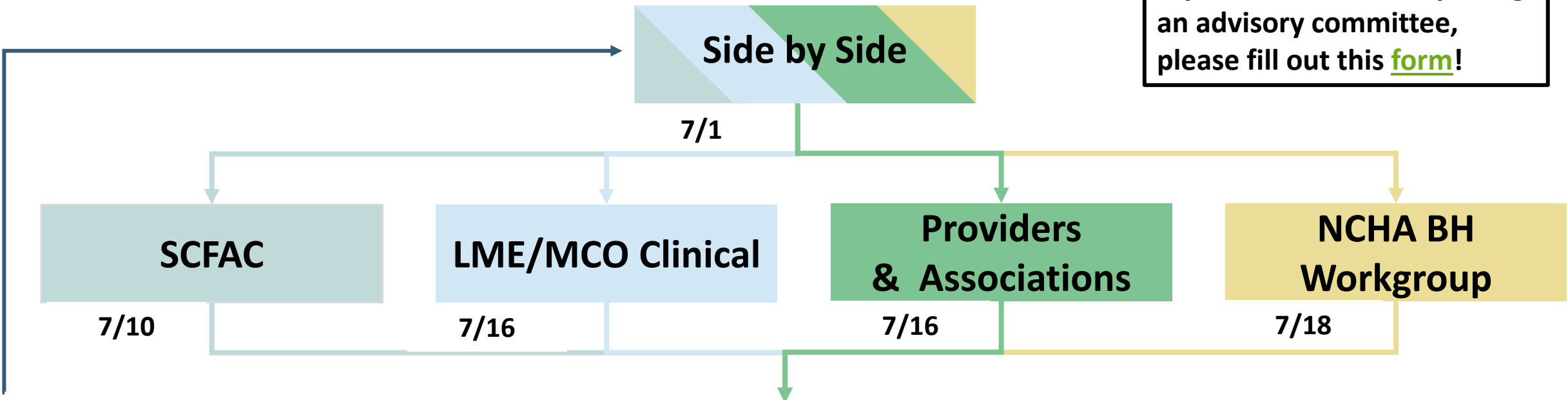
# MH/SU/IDD/TBI System Announcements & Updates





# July Community Collaboration

If you're interested in joining an advisory committee, please fill out this [form!](#)



# Toolkit: New Tailored Plan Materials Launched on June 12!

The toolkit will be updated with new materials to promote Tailored Plan launch and 1915(I) services:

- ✓ Bilingual: All items will be available in English and Spanish.
- ✓ Accessible: with improved readability on both text and visuals.
- ✓ User tested: Each item has been tested among the target demographic (SUD, SMI, TBI and I/DD members).

[Medicaid.nc.gov/Tailored-Plans/Toolkit](https://www.Medicaid.nc.gov/Tailored-Plans/Toolkit)



## Additional Bilingual Toolkit Materials Available for Download In Mid-June

Essentials Presentation Updated Dates/Services



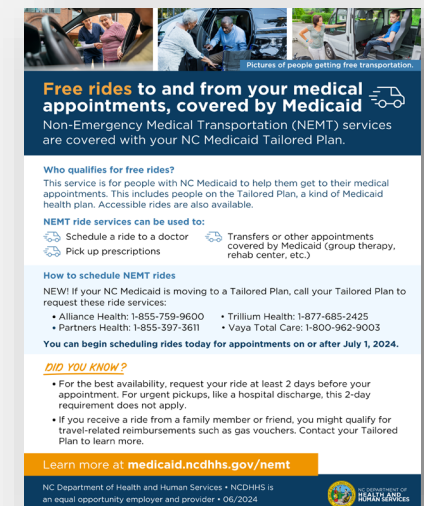
New! Social Media Posts & Graphics



New! Email templates for members and partners to download the toolkit



New! One-Page Flyers NEMT, provider coverage and 1915(I) services



# Share Your Feedback!

Share your input to help us determine what we develop during the next communication phase!

[bit.ly/TailoredPlansSurvey](https://bit.ly/TailoredPlansSurvey)



## Priority Communications Survey

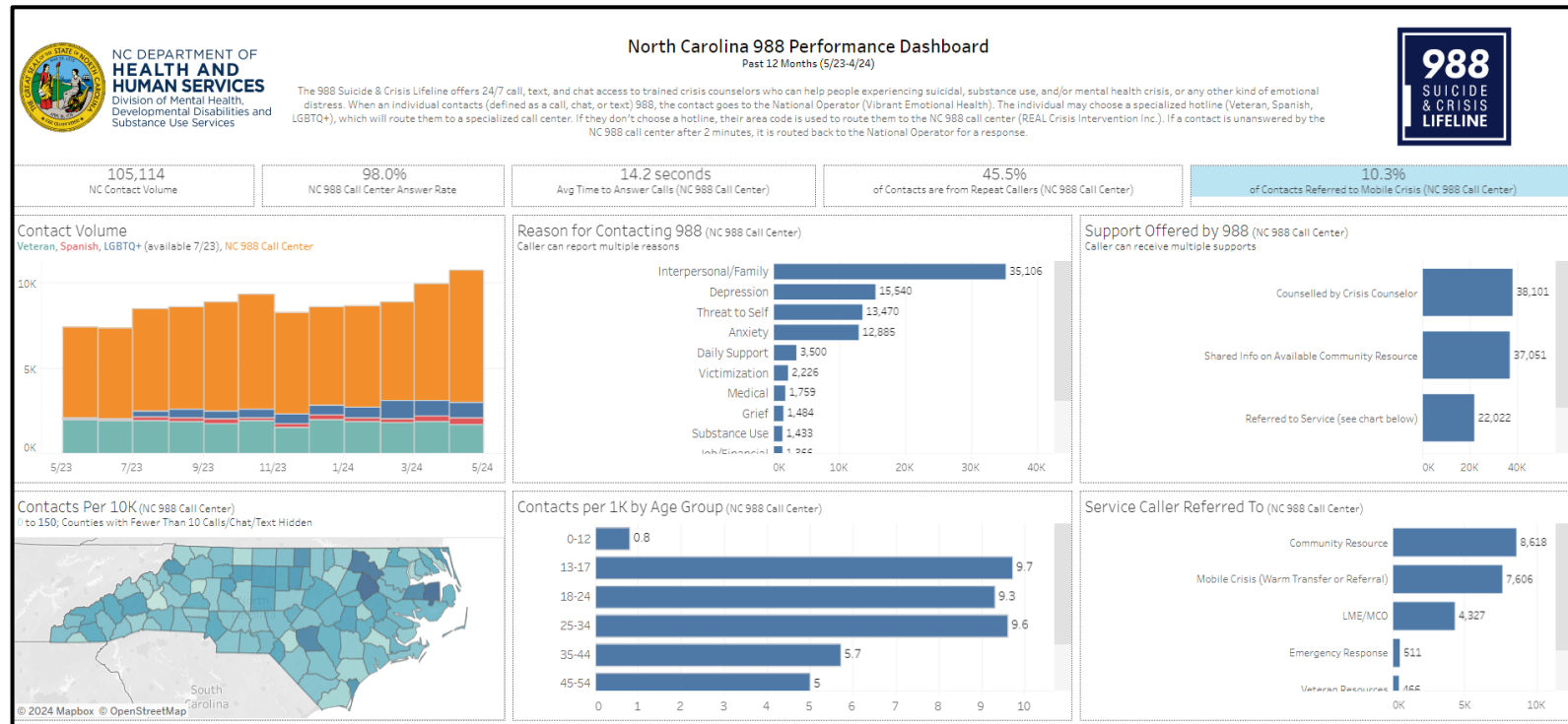


*Scan me*



# July 16th Marks the 2-Year Anniversary of 988!

- Over 111,402 callers since July 2022!
- Average time to answer calls is **14.2** seconds compared to national average of 33 seconds
- **98%** NC 988 call center answer rate compared to 90% national average



You can access the 988 [dashboard](#) on the DMHDDSUS website and the [press release](#) on the DHHS website

# Minority Mental Health Awareness Month Transgenerational Trauma Webinar

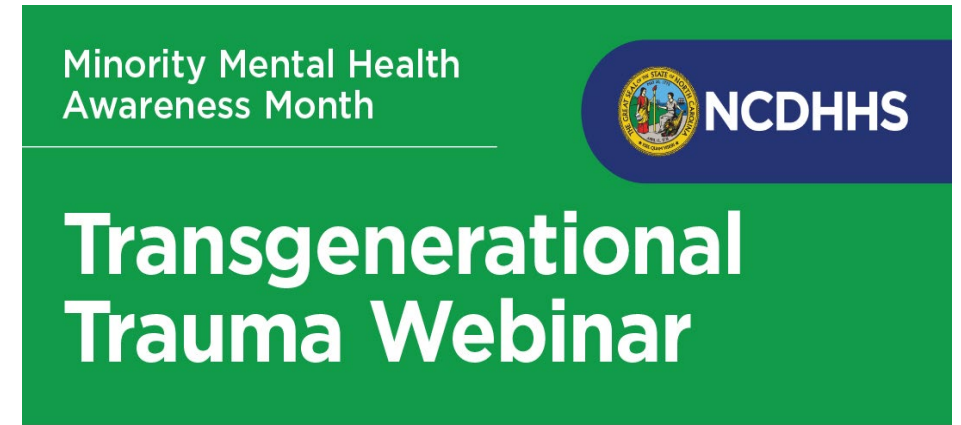
**JOIN US!**

DMH/DD/SUS is hosting a webinar to increase awareness and address how transgenerational trauma affects minority communities.

**Title:** Minority Mental Health Awareness Month – Transgenerational Trauma Webinar

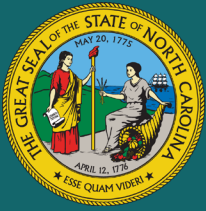
**Date/Time:** Tuesday, July 23, 2024, 11:30 – 1:00 p.m

**Join Link:** [https://www.zoomgov.com/meeting/register/vJlftfuqvrz8rElAa5NY1c9DjER1yOk5Q\\_EE](https://www.zoomgov.com/meeting/register/vJlftfuqvrz8rElAa5NY1c9DjER1yOk5Q_EE)



**Tuesday, July 23, 2024  
11:30 a.m. – 1:00 p.m.**





NC DEPARTMENT OF  
**HEALTH AND  
HUMAN SERVICES**

# Accessing Community- Based Services Through 1915(i)



# What is NC Medicaid's 1915(i)?

"1915(i)" is the name of the authority that allows Medicaid to offer Home and Community Based (HCBS) services under the State Plan.

That means these services are an 'entitlement' for anyone on Medicaid who meets eligibility requirements.

NC Medicaid's new "1915(i) services" help you live more independently in your home and in your communities, providing support such as personal care, employment assistance, and community living skills.

Learn more at: <https://medicaid.ncdhhs.gov/1915i>



# 1915(i) Home and Community-Based Services



Community Living and Support



Supported Employment



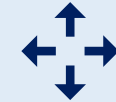
Individual Placement and Support Services



Respite Care



Individual and Transitional Support



Community Transition







**If you are on the waitlist for the NC Innovations Waiver or TBI Waiver, you may be eligible to receive these services. Receiving them will NOT affect your waitlist position.**

To find out which services you might be eligible for, call your health plan below. Or call your Tailored Care Manager or care coordinator, if you have one.

- Alliance Health 1-800-510-9132
- Trillium Health 1-877-685-2415
- Partners Health 1-888-235-4673
- Vaya Total Care 1-800-962-9003

# NC Medicaid's Member Eligibility for 1915(i) Services

Eligibility for 1915(i) services varies on a benefit-by-benefit basis and is determined after an assessment is approved. Eligible populations must have a NC Medicaid health plan managed by an LME/MCO and include individuals with I/DD, SED, SMI, SPMI, SUD, and TBI.

1915(i) Services		I/DD (Intellectual/Developmental Disability)	SED (Serious Emotional Disturbance)	SMI and/or SPMI (Serious Mental Illness)/ Severe and Persistent Mental Illness)	SUD (Severe Substance Use Disorder)	TBI (Traumatic Brain Injury)
Community Living and Support		✓ All Ages				✓ All Ages
Supported Employment		✓ Ages 16+				✓ Ages 16+
Individual Placement and Support Services			✓ Ages 16+	✓ Ages 16+	✓ Ages 16+	
Respite Care		✓ Ages 3+	✓ Ages 3-20		✓ Ages 3-20	✓ Ages 3+
Individual and Transitional Support			✓ Ages 16-21	✓ Ages 18+	✓ Ages 16+	
Community Transition		✓ All Ages		✓ All Ages	✓ All Ages	✓ All Ages

# 1915(i) Medicaid Program: Limits on SE, CLS, and IPS



The following outlines the limitations on Supported Employment (SE), Community Living and Supports (CLS), and Individual Placement and Support (IPS) under the 1915(i) Medicaid program to ensure compliance with program guidelines.

## **Supported Employment (SE) and Community Living and Supports (CLS)**

- Availability: Offered as meaningful day options.
- Combined Limit: 40 hours per week.
  - Example: If receiving 25 hours per week of CLS, SE cannot exceed 15 hours per week.
- Beneficiaries in school (3-21 y/o): 15 hours/week in school; 28 hours/week during breaks

## **1915(i) Individual Placement and Support (IPS)**

- Provider Limitation: Beneficiary can receive IPS from only one provider during any authorization period.
- Billing Restrictions: Billable only for direct employment services and supports, not for meetings, paperwork, or travel time.

# Important Notice for Individuals using 1915(b)(3) Services



If you are currently receiving 1915(b)(3) services:

- your care manager will contact you to complete the 1915(i) assessment and
- your care manager will ensure your plan is up to date to allow your services to continue.

***You should not have a lapse in services!***



# 1915(i) Service Overview: Community Living and Support (CLS)



## What is the Service?

The CLS service supports you to live independently in your home and participate in the community.

A few examples include:

- Eating, bathing, dressing, personal care, hygiene, other daily activities
- Learning life skills such as shopping and banking
- Assisting with managing medications and providing health-related education

## Who is Eligible?

CLS is available for people with:

- Intellectual and developmental disabilities (I/DD),
- Traumatic brain injury (TBI)

# 1915(i) Service Overview: Supported Employment (SE)



## What is the Service?

The SE service supports you in learning skills to find, get, and keep a job that's right for you.

A few examples include:

- Career planning and discovery
- Résumé assistance
- Job interview practice
- Learning assigned job duties
- Planning how to get to and from work

## Who is Eligible?

SE is available to people ages 16 or older with:

- Intellectual and developmental disabilities (I/DD),
- Traumatic brain injury (TBI)

# 1915(i) Service Overview: Individual Placement and Support



## What is the Service?

The Individual Placement and Support service helps you find jobs within the community. It provides ongoing support to ensure you succeed and keep the job you want.

A few examples include:

- Career planning and discovery
- Résumé assistance
- Job interview practice
- Learning assigned job duties
- Planning how to get to and from work

## Who is Eligible?

Individual Placement and Support is available to people ages 16 or older with:

- Severe and persistent mental illness (SPMI),
- Serious mental illness (SMI),
- Serious emotional disturbance (SED),
- Substance use disorder (SUD)

# 1915(i) Service Overview: Respite Care



## What is the Service?

The Respite Care service provides temporary relief for your caregivers, allowing them to take a break with peace of mind knowing you are in capable hands.

This service offers in-home and out-of-home care options including:

- Overnight care
- Weekend care
- Emergency care

## Who is Eligible?

Respite Care is available for people with:

- Serious emotional disturbance (SED); ages 3-20,
- Substance use disorder (SUD); ages 3-20,
- Intellectual and developmental disabilities (I/DD); ages 3 or older,
- Traumatic brain injury (TBI); ages 3 or older

# 1915(i) Service Overview: Individual and Transitional Support



## What is the Service?

The Individual and Transitional Support service supports you to get personalized support for recovery from mental health issues or substance use disorders.

A few examples include:

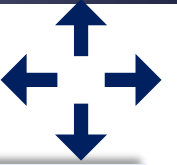
- Guiding your recovery process by developing and following a personalized recovery plan
- Accessing transportation
- Finding housing
- Managing finances
- Continuing education

## Who is Eligible?

Individual and Transitional Support is available to people with:

- Substance use disorder (SUD); ages 16 or older,
- Serious mental illness (SMI); ages 18 or older,
- Severe and persistent mental illness (SPMI); ages 18 or older,
- Serious emotional disturbance (SED); ages 16-21

# 1915(i) Service Overview: Community Transition



## What is the Service?

The Community Transition service supports you to receive up to \$5,000 to help you move from an "approved setting" to your new home. "Approved Settings" can be a state-operated health care facility, a foster or group home, a psychiatric residential treatment facility, or a community intermediate care facility (ICF-IID).

Credits can cover the following:

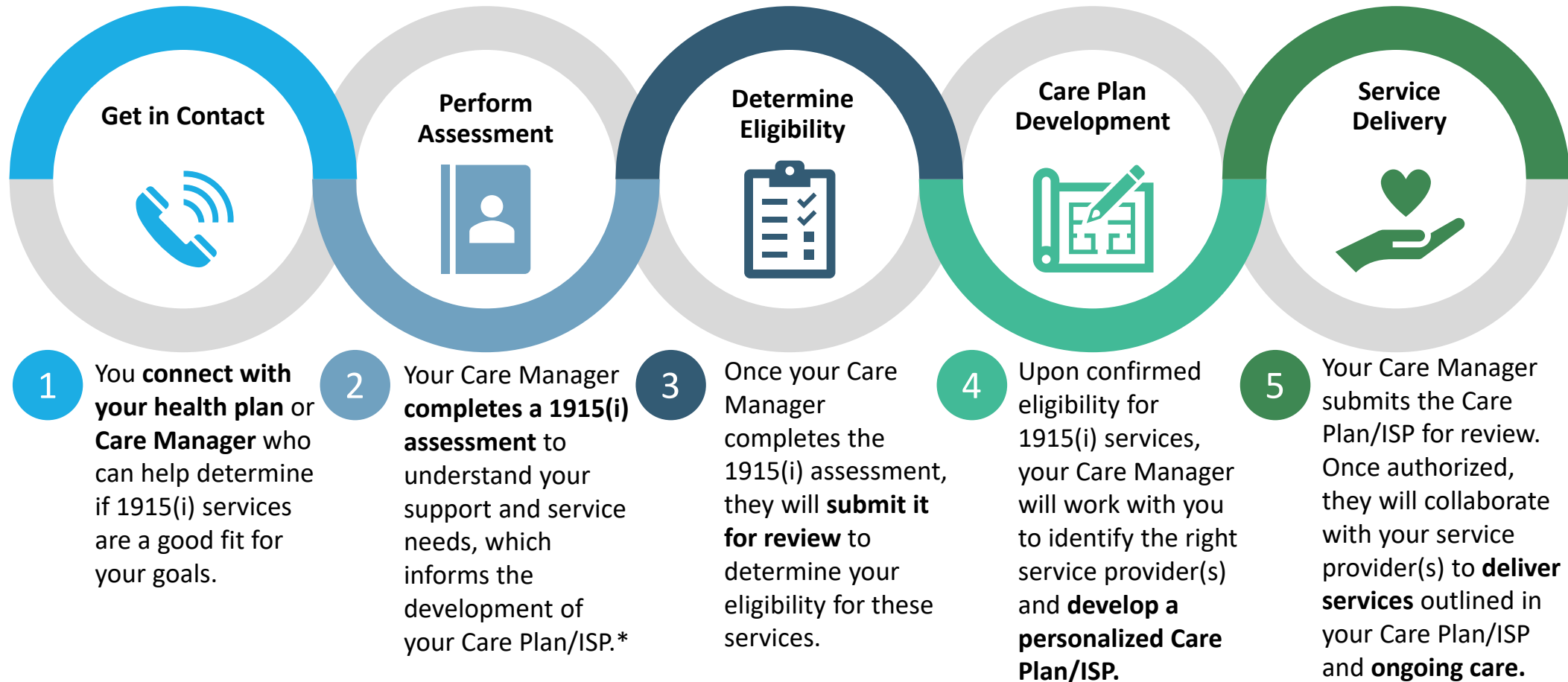
- Essential home goods (e.g., furniture, kitchen utensils, bedding, etc.)
- Moving expenses
- Set-up fees for utilities (e.g., phone, internet, gas)

## Who is Eligible?

The Community Transition service is available to people with:

- Intellectual and developmental disabilities (I/DD),
- Traumatic brain injury (TBI),
- Substance use disorder (SUD),
- Serious mental illness (SMI),
- Severe and persistent mental illness (SPMI)

# Process for Accessing 1915(i) Services



1915(i) assessments are conducted annually or when circumstances or needs change significantly. These assessments determine continued eligibility for 1915(i) services.

\*The Department uses different names for this plan according to a person's need (Care Plan for people with behavioral health-related needs and an ISP for people with I/DD or TBI).

# Scenario 1: Leaving the Nest

## Background:

- Paula has a traumatic brain injury (TBI) and currently lives with her mom, Jackie, who acts as her caregiver and assists her with daily activities



## Challenge:

- Paula dreams of living on her own after graduating from high school. However, she has lapses in her memory and finds it difficult to stay organized, which raises concerns about her ability to manage independent living.



## Process:

- Paula shares her desire to live independently with her Tailored Care Manager, who conducts a 1915(i) assessment and determines Paula's eligibility for services.
- Paula's Tailored Care Manager helps her find a **Community Living and Supports** provider. Together, they create an Individualized Service Plan (ISP) including **Community Living Supports**.



## Result:

- Paula receives **Community Living and Supports**. Paula has a staff person who comes to her home 3 days per week to help her learn how to organize herself and her space to do things on her own.
- Paula learns how to cook, clean, do laundry, and starts to manage part of her own finances.





# Scenario 2: The Ambitious Worker

## Background:

- Alexia has been diagnosed with Schizoaffective Disorder.
- Alexia was previously determined to be eligible for 1915(i) services and is currently receiving 1915(i) services.



## Challenge:

- Alexia desires more independence and aspires to find a job.



## Process:

- Alexia tells her Tailored Care Manager that she would like a job.
- Alexia's Tailored Care Manager helps her find an **Individual Placement & Supports – Supported Employment** provider.
- Alexia's Tailored Care Manager works with Alexia to update her care plan to include **Individual Placement & Supports – Supported Employment**.



## Result:

- Alexia receives **Individual Placement & Supports – Supported Employment** and her Employment Specialist helps her explore jobs, develop her resume, apply for jobs, practice interviewing, and land her job.
- The employment specialist continues to support Alexia with navigating and learning her new job for as long as she wants the support.





NC DEPARTMENT OF  
**HEALTH AND  
 HUMAN SERVICES**  
 Division of Mental Health,  
 Developmental Disabilities and  
 Substance Use Services

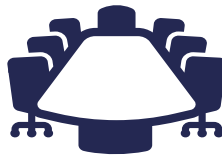
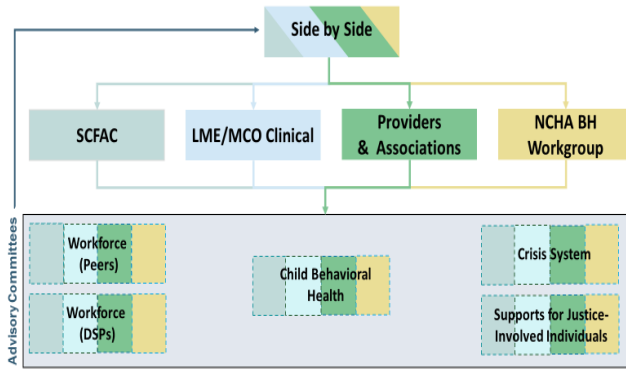
# Stay Connected with DMHDDSUS



- [Join our Side by Side Webinars](#)



## Community Collaboration



- [Join our Advisory Committees](#)



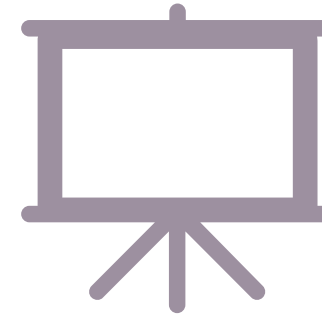
- [Join our Mailing List](#)



# Q&A



Questions and feedback are welcome at  
[BHIDD.HelpCenter@dhhs.nc.gov](mailto:BHIDD.HelpCenter@dhhs.nc.gov).



The recording and presentation slides for this  
webinar will be posted to the [Community  
Engagement & Training](#) webpage.