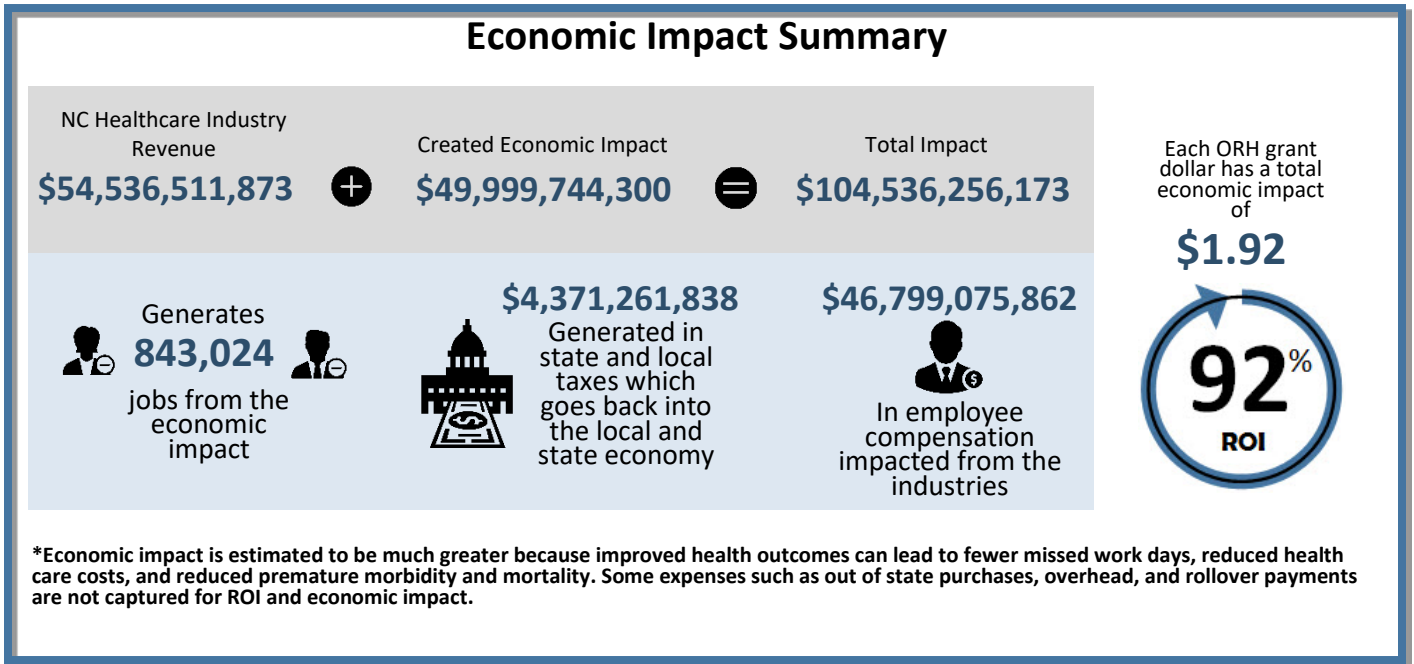


# 2018 ALL HEALTHCARE INDUSTRIES IN NORTH CAROLINA



The economic impact results were calculated by using IMPLAN software from 2017 data in the 2018 spending year. The \$54,536,511,873 in revenue generated from the North Carolina healthcare industry (annual output) supports an additional \$49,999,744,300 in economic activity throughout the local state economy, for a total impact of \$104,536,256,173. This yields a ROI of 92%, such that each dollar of revenue has a total economic impact of \$1.92. This supports about 843,024 jobs created from the industry and \$46,799,075,862 in employee compensation. The image below represents the breakdown of impact type generated through IMPLAN according to the previously mentioned figures:

### Economic Indicators by Impact

Impact ^	Employment	Labor Income	Value Added	Output
1 - Direct	499,079.44	\$30,478,316,964.47	\$34,063,845,301.54	\$54,536,511,873.00
2 - Indirect	129,299.59	\$6,781,598,516.11	\$11,652,095,724.07	\$19,601,781,311.81
3 - Induced	214,644.99	\$9,539,160,380.99	\$17,510,235,924.87	\$30,397,962,987.83
Total	843,024.02	\$46,799,075,861.57	\$63,226,176,950.48	\$104,536,256,172.64

## TAX IMPLICATIONS

In addition, \$4,371,261,838 is generated in state and local taxes which goes back into the local and state economy. The image below represents the breakdown of state and local taxes by type generated through IMPLAN according to the previously mentioned figures:

Type Code Paying >			
Type Description Paying >			
	Transfer Code ^	Description	
1	15020	TOPI: Sales Tax	\$1,595,610,357.02
2	15021	TOPI: Property Tax	\$1,095,229,400.25
3	15022	TOPI: Motor Vehicle License	\$39,900,456.27
4	15023	TOPI: Severance Tax	\$190,396.31
5	15024	TOPI: Other Taxes	\$175,391,834.43
6	15025	TOPI: Special Assessments	\$2,231,924.50
7	15026	Corporate Profits Tax	\$52,803,970.56
8	15027	Personal Tax: Income Tax	\$1,221,277,446.52
9	15029	Personal Transfers	\$111,679,042.82
10	15030	Personal Tax: Motor Vehicle License	\$56,048,877.11
11	15031	Personal Tax: Property Tax	\$14,764,880.96
12	15032	Personal Tax: Other Tax	\$6,133,251.27
Total			\$4,371,261,838.06

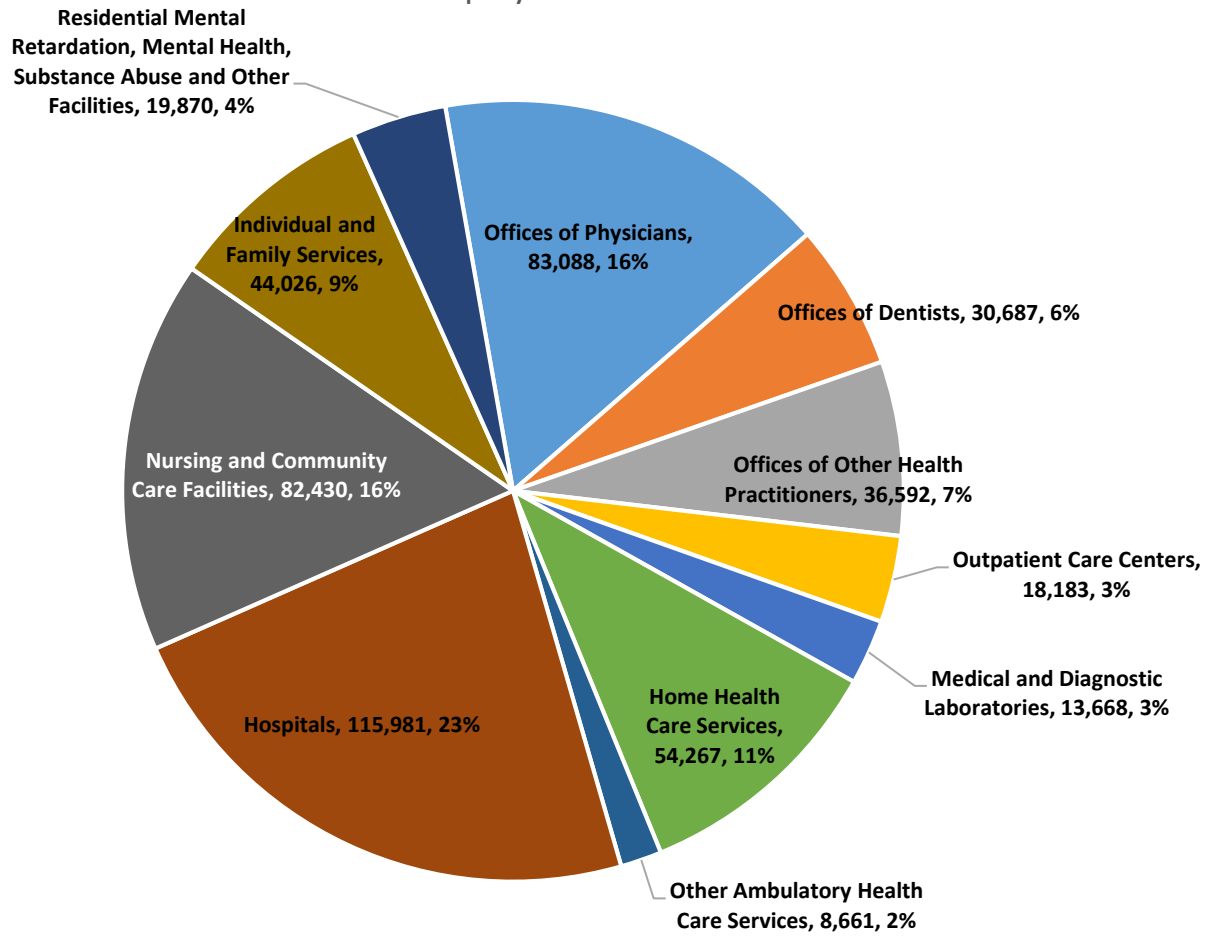
## INDUSTRY CLASSIFICATIONS AND BREAKDOWNS

Data generated from IMPLAN software (2017)

The results below are the data from IMPLAN for each respective industry. Please note that these numbers are in the pre-analysis phase of the study, without the effect of economic multipliers.

<b>Sector</b>	<b>Industry Output</b>	<b>Employment</b>	<b>Employee Compensation</b>
Offices of Physicians	\$12,522,604,241	83,088	\$8,018,331,500
Offices of Dentists	\$4,513,948,251	30,687	\$2,020,427,519
Offices of Other Health Practitioners	\$3,313,599,111	36,592	\$1,124,161,018
Outpatient Care Centers	\$2,479,420,657	18,183	\$931,529,600
Medical and Diagnostic Laboratories	\$1,687,670,065	13,668	\$1,062,812,020
Home Health Care Services	\$2,630,137,632	54,267	\$1,416,029,859
Other Ambulatory Health Care Services	\$873,502,410	8,661	\$344,227,488
Hospitals	\$18,671,048,364	115,981	\$8,314,918,339
Nursing and Community Care Facilities	\$5,370,668,970	82,430	\$2,776,923,026
Individual and Family Services	\$1,563,308,134	44,026	\$1,109,644,877
Residential Mental Retardation, Mental Health, Substance Abuse and Other Facilities	\$910,604,038	19,870	\$608,744,588
<b>Totals</b>	<b>\$ 54,536,511,873</b>	<b>507,453</b>	<b>\$ 27,727,749,835</b>

# Employment



# Industry Output

