

LMEMCO/TP Dashboard

July 31, 2023

Alliance

Eastpointe

Partners

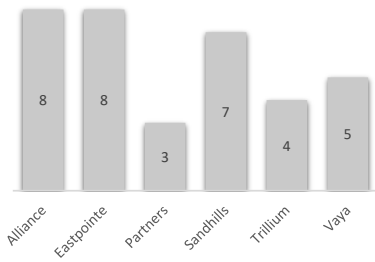
Sandhills

Trillium

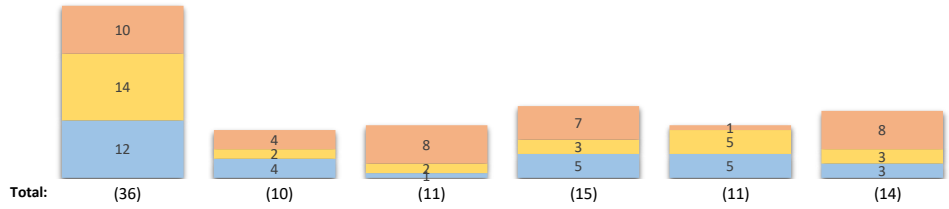
Vaya

Medicaid, Children in ED & DSS Settings (April 23-June 23)

Per 10,000 Children w Medicaid

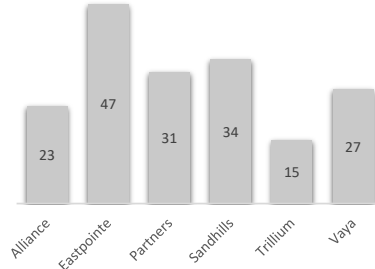


■ EDs, Not DSS Involved ■ EDs, DSS Involved ■ DSS Offices ■ Change (From Last Month)

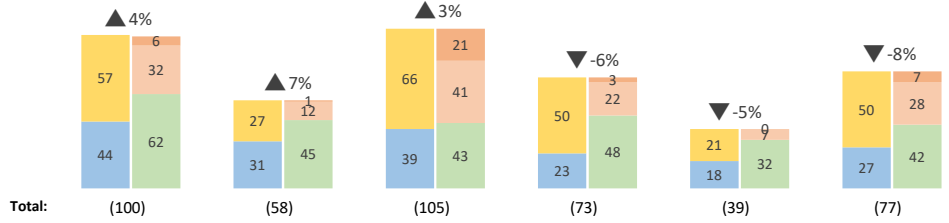


Medicaid, Children in PRTFs (Jan 2023 - Mar 2023)

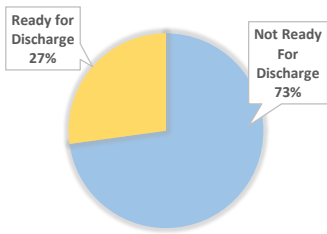
Per 10,000 Children w Medicaid



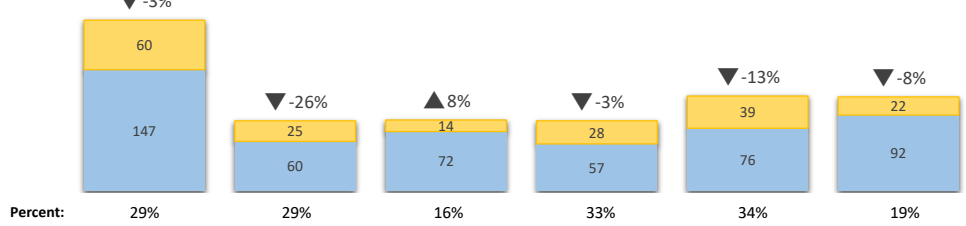
■ Not DSS Involved ■ DSS Involved ■ In State ■ Out of State-NC Border Facility ■ Out of State



Consumers in State Psych Hospitals Ready for Discharge (Feb 2023 - April 2023)

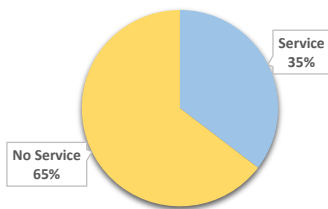


■ Not Ready For Discharge ■ Ready for Discharge

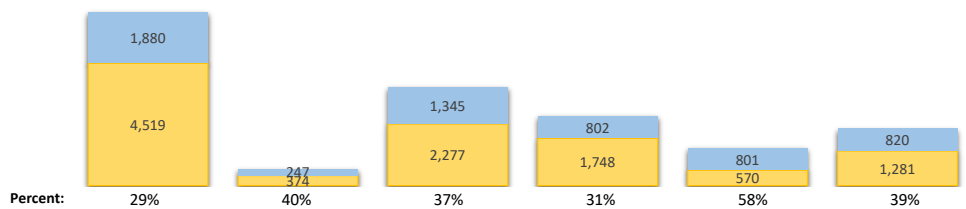


People on Innovations Waitlist Receiving Any Medicaid or State BH/IDD Service (Jan 2023 - Mar 2023)

State Total



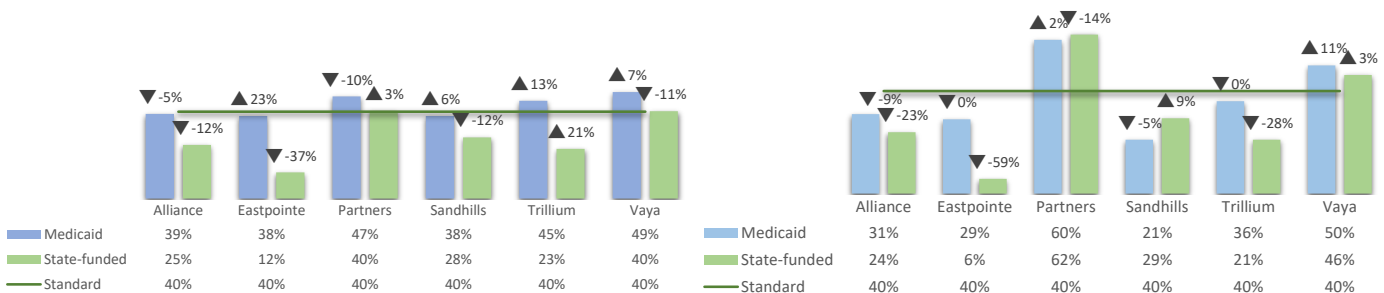
■ No Service ■ Service



Follow-up Within 7 Days After Inpatient Discharge (SFY23 Q2)

Mental Health

SUD



Metrics

*Arrow indicators compare this month's data to last month's data. If on top, applies to whole bar. If within a section, applies to that section.

Medicaid, Children in Inappropriate Crisis Settings: 12 week rolling average (LMEMCO self report for ED data; DSS office report for DSS office boarding data, started in February 2023); Directional arrow down shows improvement

Medicaid, Children in PRTFs: 3 month rolling avg (NC Tracks encounters pulled by NC Medicaid); Directional arrow down shows improvement

Consumers in State Psych Hospitals Ready for Discharge: 3 month rolling avg of consumers deemed ready for discharge by medical personnel (DSOHF data); Directional arrow down shows improvement

People on Innovations Waitlist Receiving Any Service: 3 month rolling avg (LMEMCO self report); Directional arrow up shows improvement

Follow-up Within 7 Days After Inpatient Discharge: Quarterly average with 40% benchmark (NC Tracks paid encounters/claims pulled by NC Medicaid/DMHDSAS data); Directional arrow up shows improvement