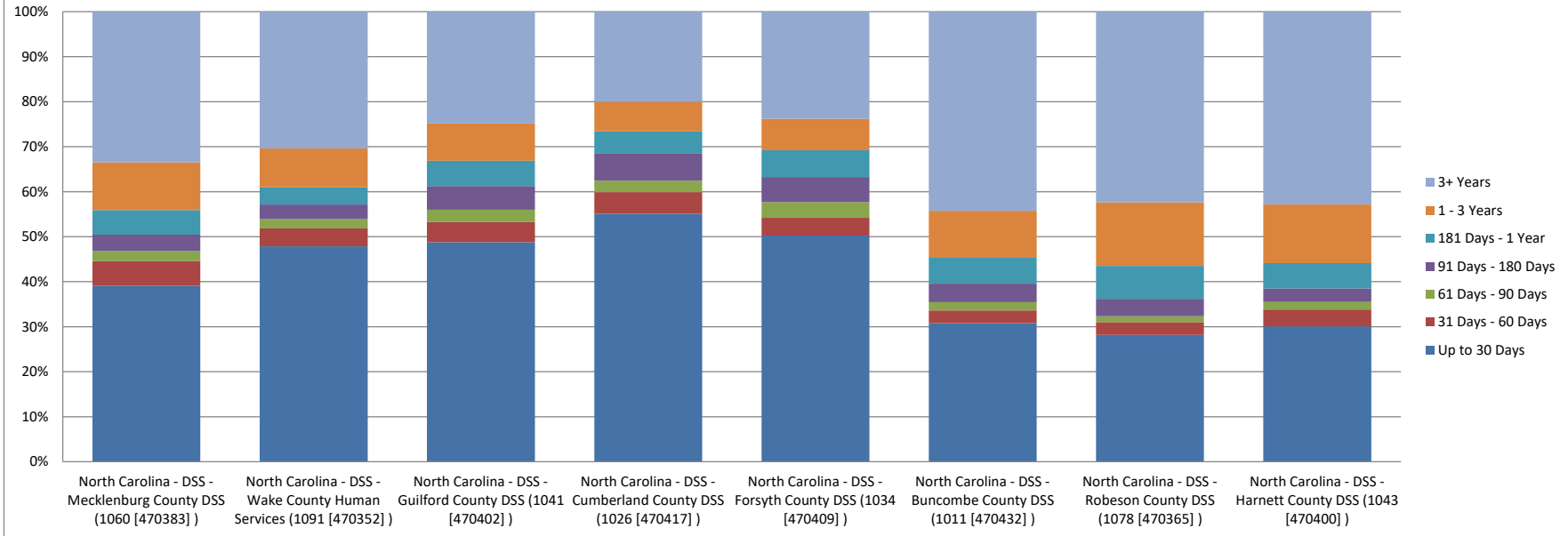


## Top NC Counties - Record Age Distribution

*50% of NC TRXs Represented by 8 Counties*

*December, 2018*



Location Name (County)	Up to 30 Days	31 Days - 60 Days	61 Days - 90 Days	91 Days - 180 Days	181 Days - 1 Year	1 - 3 Years	3+ Years	Invalid	Total
North Carolina - DSS - Mecklenburg County DSS (1060 [470383])	6,665	939	379	621	934	1,805	5,711	2	17,056
North Carolina - DSS - Wake County Human Services (1091 [470352])	3,727	309	159	252	298	672	2,367	1	7,785
North Carolina - DSS - Guilford County DSS (1041 [470402])	2,485	229	141	267	288	423	1,264	1	5,098
North Carolina - DSS - Cumberland County DSS (1026 [470417])	2,235	195	103	243	203	264	814		4,057
North Carolina - DSS - Forsyth County DSS (1034 [470409])	1,906	149	132	213	225	266	902		3,793
North Carolina - DSS - Buncombe County DSS (1011 [470432])	1,133	105	68	151	212	384	1,630		3,683
North Carolina - DSS - Robeson County DSS (1078 [470365])	613	62	28	84	159	308	921		2,175
North Carolina - DSS - Harnett County DSS (1043 [470400])	597	74	33	60	111	259	850		1,984
North Carolina - DSS - Durham County DSS (1032 [470411])	1,083	104	43	80	100	138	427		1,975
North Carolina - DSS - Gaston County DSS (1036 [470407])	1,340	99	36	95	69	101	177		1,917
North Carolina - DSS - Pitt County DSS (1074 [470369])	1,060	77	47	111	118	98	400		1,911
North Carolina - DSS - Cabarrus County DSS (1013 [470430])	919	153	59	98	74	78	210		1,591
North Carolina - DSS - Granville County DSS (1039 [470404])	401	47	69	91	155	236	572		1,571
North Carolina - DSS - Rowan County DSS (1079 [470364])	589	91	38	60	86	141	472		1,477
North Carolina - DSS - Iredell County DSS (1049 [470394])	700	54	39	70	73	122	388		1,446
North Carolina - DSS - Union County DSS (1089 [470354])	644	38	21	40	45	109	514	1	1,412
North Carolina - DSS - Onslow County DSS (1068 [470375])	562	56	31	69	69	125	443		1,355
North Carolina - DSS - Cleveland County DSS (1023 [470420])	633	52	41	58	99	101	341		1,325
North Carolina - DSS - Alamance County DSS (1001 [470342])	534	36	26	52	84	166	390	1	1,289
North Carolina - DSS - Catawba County Dept of SS (1018 [470425])	692	82	44	84	49	76	244	1	1,272
North Carolina - DSS - Johnston County DSS (1051 [470392])	554	60	23	65	60	68	332		1,162

North Carolina - DSS - Orange County DSS (1069 [470374] )	328	36	25	46	50	127	510	1,122
North Carolina - DSS - Edgecombe County DSS (1033 [470410] )	593	67	25	46	37	68	239	1,075
North Carolina - DSS - Wilson County DSS (1097 [470346] )	532	38	17	29	44	68	271	999
North Carolina - DSS - Randolph County DSS (1076 [470367] )	378	32	24	54	59	82	353	982
North Carolina - DSS - Wayne County DSS (1095 [470348] )	678	53	22	35	28	37	112	965
North Carolina - DSS - Nash County DSS (1064 [470379] )	605	67	21	38	42	61	130	964
North Carolina - DSS - Craven County DSS (1025 [470418] )	549	46	39	63	44	54	145	940
North Carolina - DSS - New Hanover County DSS (1066 [470377] )	564	53	29	47	35	45	119	892
North Carolina - DSS - Hoke County DSS (1047 [470396] )	239	31	20	28	47	136	369	870
North Carolina - DSS - Burke County DSS (1012 [470431] )	315	37	27	35	57	63	303	837
North Carolina - DSS - Henderson County DSS (1045 [470398] )	358	27	13	39	45	73	279	834
North Carolina - DSS - Caldwell County DSS (1014 [470429] )	346	36	18	44	29	55	185	713
North Carolina - DSS - Davidson County DSS (1029 [470414] )	413	30	36	44	25	43	117	708
North Carolina - DSS - Scotland County DSS (1082 [470361] )	301	57	28	33	35	42	159	655
North Carolina - DSS - Lee County DSS (1053 [470390] )	313	33	12	31	31	59	162	641
North Carolina - DSS - Rutherford County DSS (1080 [470363] )	251	20	16	32	37	81	174	1 612
North Carolina - DSS - Lenoir County DSS (1054 [470389] )	315	28	12	29	24	47	150	605
North Carolina - DSS - Davie County DSS (1030 [470413] )	137	10	5	23	36	104	249	1 565
North Carolina - DSS - Halifax County DSS (1042 [470401] )	337	44	15	14	14	21	86	1 532
North Carolina - DSS - Brunswick County DSS (1010 [470433] )	271	20	7	18	22	26	163	527
North Carolina - DSS - Pasquotank County DSS (1070 [470373] )	234	16	20	18	25	37	174	524
North Carolina - DSS - Person County DSS (1073 [470370] )	146	20	12	11	21	41	164	415
North Carolina - DSS - Chatham County DSS (1019 [470424] )	148	15	3	16	24	48	152	406
North Carolina - DSS - Vance County DSS (1090 [470353] )	209	21	28	29	23	23	50	383
North Carolina - DSS - Rockingham County DSS (751056 [471885] )	270	17	15	10	11	16	36	375
North Carolina - DSS - Lincoln County DSS (1055 [470388] )	204	19	19	25	14	29	43	353
North Carolina - DSS - Franklin County DSS (1035 [470408] )	243	16	4	13	5	10	44	1 336
North Carolina - DSS - Moore County DSS (1063 [470380] )	173	6	5	18	22	34	64	322
North Carolina - DSS - Richmond County DSS (1077 [470366] )	194	24	14	11	13	14	35	305
North Carolina - DSS - Columbus County DSS (1024 [470419] )	140	18	6	24	21	22	56	287
North Carolina - DSS - Stanly County DSS (1083 [470360] )	196	13	12	9	3	15	33	281
North Carolina - DSS - Surry County DSS (1085 [470358] )	199	12	13	9	14	7	25	279
North Carolina - DSS - Haywood County DSS (1044 [470399] )	130	3	3	14	13	13	77	253
North Carolina - DSS - Sampson County DSS (1081 [470362] )	183	5	3	13	10	6	27	247
North Carolina - DSS - Martin County DSS (1058 [470385] )	126	10	8	9	8	19	64	244
North Carolina - DSS - Wilkes County DSS (1096 [470347] )	183	8	8	7	10	12	16	244
North Carolina - DSS - Duplin County DSS (1031 [470412] )	93	21	12	14	22	21	53	236
North Carolina - DSS - Hertford County DSS (1046 [470397] )	192	11	1	7	2	5	17	235
North Carolina - DSS - Jackson County DSS (1050 [470393] )	89	3	5	13	10	19	79	218
North Carolina - DSS - Jones County DSS (1052 [470391] )	33	6	3	6	15	31	119	213
North Carolina - DSS - Watauga County DSS (1094 [470349] )	46	3	2	6	4	19	110	1 191
North Carolina - DSS - Chowan County DSS (1021 [470422] )	49	4	8	9	15	21	79	185
North Carolina - DSS - Carteret County DSS (1016 [470427] )	86	8	8	12	6	10	54	184
North Carolina - DSS - Dare County DSS (1028 [470415] )	66	14		8	14	16	66	184
North Carolina - DSS - Bladen County DSS (1009 [470434] )	108	12		6	8	13	34	181
North Carolina - DSS - Montgomery County DSS (1062 [470381] )	96	8	7	10	9	12	39	181
North Carolina - DSS - Transylvania County DSS (1087 [470356] )	81	4	3	8	6	17	52	171
North Carolina - DSS - McDowell County DSS (1059 [470384] )	114	5	7	11	6	6	13	162
North Carolina - DSS - Northampton County DSS (1067 [470376] )	105	2	1	5	5	10	31	159
North Carolina - DSS - Macon County DSS (1056 [470387] )	99	6	6	7	6	10	23	157
North Carolina - DSS - Anson County DSS (1004 [470439] )	103	15	1	4	7	8	16	154
North Carolina - DSS - Bertie County DSS (1008 [470435] )	100	2	4	7	5	10	17	145
North Carolina - DSS - Alexander County DSS (1002 [470343] )	61	11	6	10	9	13	34	144

North Carolina - DSS - Cherokee County DSS (1020 [470423] )	64	9	2	7	13	6	43	144
North Carolina - DSS - Currituck County DSS (1027 [470416] )	66	6	4	6	4	7	49	142
North Carolina - DSS - Warren County DSS (1092 [470351] )	78	2	14	10	7	8	21	140
North Carolina - DSS - Pender County DSS (1071 [470372] )	72	12	3	9	7	8	26	137
North Carolina - DSS - Beaufort County DSS (1007 [470436] )	86	10	3	9	5	9	13	135
North Carolina - DSS - STOKES COUNTY DSS (1084 [470359] )	64	3	12	9	7	10	27	132
North Carolina - DSS - Madison County DSS (1057 [470386] )	77	4	3	3	6	9	27	129
North Carolina - DSS - Caswell County DSS (1017 [470426] )	59	4	3	4	4	6	34	114
North Carolina - DSS - Perquimans County DSS (1072 [470371] )	40	5		9	6	8	46	114
North Carolina - DSS - Ashe County DSS (1005 [470438] )	64		3	3	5	5	32	112
North Carolina - DSS - Washington County DSS (1093 [470350] )	44	2	4	11	2	8	31	102
North Carolina - DSS - Greene County DSS (1040 [470403] )	67	5	1	4	2	3	18	100
North Carolina - DSS - NC Div of Social Services (1065 [470378] )	26		4	5	6	3	17	61
North Carolina - DSS - Gates County DSS (1037 [470406] )	43	1		1		5	9	59
North Carolina - DSS - Mitchell County DSS (1061 [470382] )	40	2	2	1	2	5	5	57
North Carolina - DSS - Polk County DSS (1075 [470368] )	18	1		2	3	7	23	54
North Carolina - DSS - Yancey County DSS (1099 [470344] )	28	1	3	1	8	5	8	54
North Carolina - DSS - Swain County DSS (1086 [470357] )	16	1	1	1	3	4	24	50
North Carolina - DSS - Camden County DSS (1015 [470428] )	24	2	2	1	2	2	16	49
North Carolina - DSS - Clay County DSS (1022 [470421] )	33	6		1		2	7	49
North Carolina - DSS - Avery County DSS (1006 [470437] )	17	1		3		10	17	48
North Carolina - DSS - Yadkin County DSS (1098 [470345] )	29	7	1	5	1		2	45
North Carolina - DSS - Pamlico County DSS (903377 [471886] )	19	3		4	1	4	11	42
North Carolina - DSS - Alleghany County DSS (1003 [470440] )	24	3	3	1		3	1	35
North Carolina - DSS - Tyrell County DSS (1088 [470355] )	13			1		1	9	24
North Carolina - DSS - Graham County DSS (1038 [470405] )	2						2	4