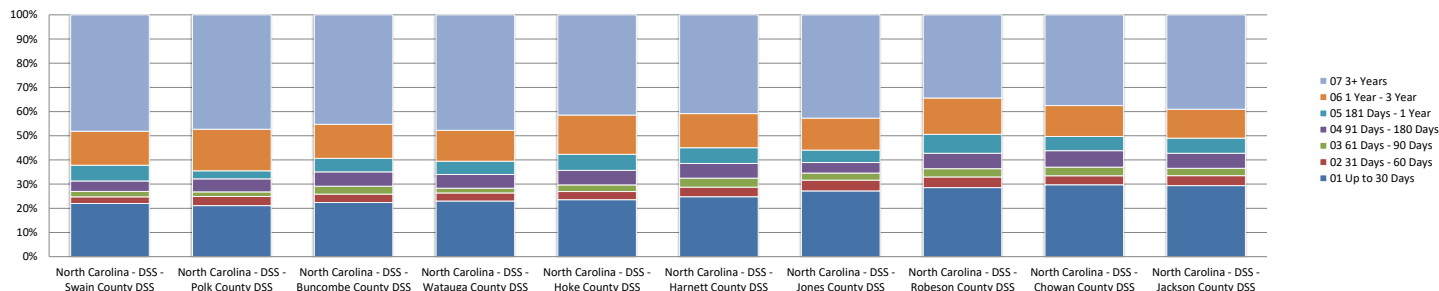


Top 10 Counties- Record Age Distribution Chart
Jan - May 2019



Row Labels	01 Up to 30 Days	02 31 Days - 60 Days	03 61 Days - 90 Days	04 91 Days - 180 Days	05 181 Days - 1 Year	06 1 Year - 3 Year	07 3+ Years	n/a	Grand Total	Percentage of usage >3mths
North Carolina - DSS - Swain County DSS	158	20	16	31	47	101	346		719	75%
North Carolina - DSS - Polk County DSS	145	26	13	37	23	118	325	2	687	75%
North Carolina - DSS - Buncombe County DSS	7159	1114	1038	1895	1793	4480	14485	2	31964	74%
North Carolina - DSS - Watauga County DSS	248	36	21	61	59	138	514	2	1077	74%
North Carolina - DSS - Hoke County DSS	1390	197	162	357	389	958	2442	1	5895	73%
North Carolina - DSS - Harnett County DSS	3662	591	551	898	962	2085	6041	2	14790	71%
North Carolina - DSS - Jones County DSS	317	52	34	51	60	154	498		1166	68%
North Carolina - DSS - Robeson County DSS	4110	633	487	918	1129	2158	4947	1	14382	67%
North Carolina - DSS - Chowan County DSS	489	61	59	112	97	210	617		1645	67%
North Carolina - DSS - Jackson County DSS	589	82	61	125	125	240	782		2004	67%
North Carolina - DSS - Mecklenburg County DSS	42637	6414	5926	11514	12389	23272	43477	33	145629	66%
North Carolina - DSS - Onslow County DSS	3932	495	398	890	895	1717	4699		13026	66%
North Carolina - DSS - Duplin County DSS	771	146	106	226	267	401	756		2673	66%
North Carolina - DSS - Davie County DSS	861	119	68	141	196	380	1088		2853	66%
North Carolina - DSS - Johnston County DSS	4128	622	513	992	950	2114	4438	1	13757	65%
North Carolina - DSS - Wake County Human Services	20836	2924	2582	5005	4750	9844	22544	19	68485	65%
North Carolina - DSS - Granville County DSS	1968	310	269	635	570	892	1920		6564	65%
North Carolina - DSS - Henderson County DSS	2376	306	292	486	412	972	2833		7677	65%
North Carolina - DSS - Durham County DSS	8352	1514	1300	2429	2103	3930	8061	1	27689	64%
North Carolina - DSS - Franklin County DSS	1397	217	174	319	342	614	1402		4465	64%
North Carolina - DSS - Columbus County DSS	1058	145	133	219	238	484	1049		3326	64%
North Carolina - DSS - Forsyth County DSS	12316	2044	1747	3561	3186	5428	11235	2	39517	64%
North Carolina - DSS - Moore County DSS	1473	200	184	358	335	633	1385		4568	63%
North Carolina - DSS - Rowan County DSS	4228	698	460	946	933	2176	3978		13419	63%
North Carolina - DSS - Guilford County DSS	22298	3642	3056	5979	5981	9802	19225	1	69983	63%
North Carolina - DSS - Halifax County DSS	2616	341	281	581	613	934	2554		7920	63%
North Carolina - DSS - Orange County DSS	2265	340	268	494	386	872	2324		6949	63%
North Carolina - DSS - Haywood County DSS	1142	142	130	299	278	516	904		3411	62%
North Carolina - DSS - Union County DSS	3618	447	396	794	787	1176	3182		10400	61%
North Carolina - DSS - Cleveland County DSS	5016	780	740	1253	1047	2256	3675		14767	61%
North Carolina - DSS - Wayne County DSS	4451	645	538	1001	816	1476	3855		12782	60%
North Carolina - DSS - Hyde County DSS	14		1	2	3	3	12		35	60%
North Carolina - DSS - Cabarrus County DSS	6867	1070	1017	1843	1799	2481	4322	2	19399	59%
North Carolina - DSS - Wilson County DSS	3621	511	484	940	907	1298	2331		10092	59%
North Carolina - DSS - Gaston County DSS	7945	1361	1051	1825	1693	2950	5654	3	22479	59%
North Carolina - DSS - NC Div of Social Services	120	17	13	35	31	38	74		328	58%
North Carolina - DSS - Person County DSS	800	182	148	191	170	227	630		2348	58%
North Carolina - DSS - Chatham County DSS	1251	154	127	238	314	370	888		3342	58%
North Carolina - DSS - Caldwell County DSS	2418	382	347	768	393	739	1539		6586	57%
North Carolina - DSS - Caswell County DSS	505	96	62	113	105	164	366		1411	57%
North Carolina - DSS - Pitt County DSS	7175	1028	883	1519	1345	2295	4995	1	19240	57%
North Carolina - DSS - Lenoir County DSS	2044	347	273	512	446	657	1307	1	5586	57%
North Carolina - DSS - Burke County DSS	2418	367	269	540	412	760	1738		6504	57%
North Carolina - DSS - Dare County DSS	447	56	51	80	87	119	329		1169	57%
North Carolina - DSS - Rockingham County DSS	1765	274	206	382	414	651	1016		4708	57%
North Carolina - DSS - Cumberland County DSS	11444	1767	1351	2538	2007	3846	7208	3	30161	56%

