



North Carolina Department of Health and Human Services  
Division of Social Services

Pat McCrory  
Governor

Aldona Z. Wos, M.D.  
Ambassador (Ret.)  
Secretary DHHS  
  
Wayne E. Black  
Division Director

July 1, 2013

**Dear County Directors of Social Services**

**ATTENTION: Food and Nutrition Services Program Managers and Supervisors  
County Security Officers**

**SUBJECT: New Historical Data Inquiry System**

**I. GENERAL**

Due to the decommission of the Food Stamp Information System (FSIS), inquiry functions, calculation of benefits and tracking benefits that were captured prior to NC FAST have been disabled. Although the system has been decommissioned county and state staff continue to have a need to view historical data and conduct investigations. In order to provide this function a new system, Historical Data Inquiry System (referred to as "FSIS Lite), has been developed. The system archives historical data collected in FSIS. The primary purpose of this system is to allow county and state staff to view pre-NC FAST FSIS data and calculate benefits based on the FSIS system functionalities including case inquiry (SLIN), trial budget (SLAW), benefit tracking (SLTR) and benefits inquiry (SLII).

Individuals who currently have access to the FSIS legacy system will have access to FSIS Lite and no action is required of the security officer. The new role will be listed on the e-IRAAF screen. Access should be requested for new users as needed.

Performance Management/Reporting & Evaluation Management Section

[www.ncdhhs.gov](http://www.ncdhhs.gov) • [www.ncdhhs.gov/dss](http://www.ncdhhs.gov/dss)

Tel 919-527-6260 • Fax 919-334-1052

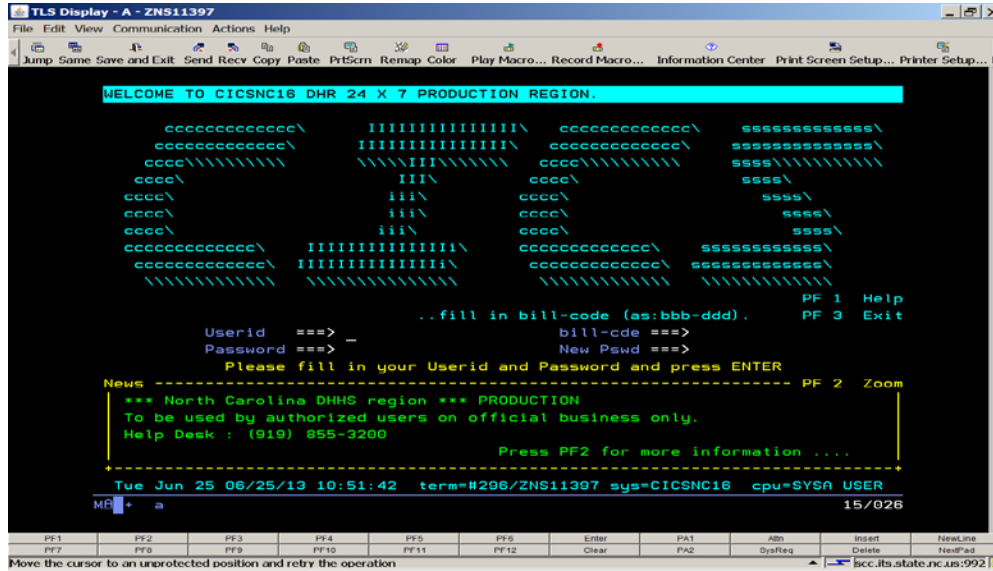
Location: Hargrove Bldg/Dorothea Dix Campus • 820 S. Boylan Ave. • Raleigh, NC 27603

Mailing Address: 2415 Mail Service Center • Raleigh, NC 27699-2415

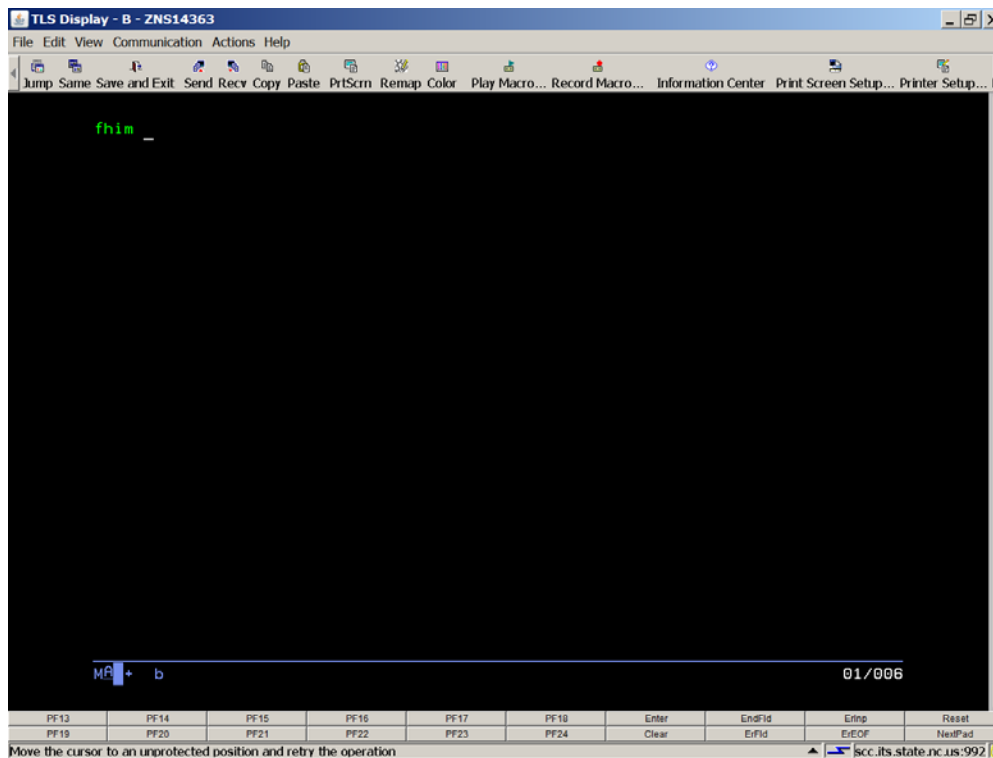
An Equal Opportunity / Affirmative Action Employer

## II. ACCESSING FSIS LITE

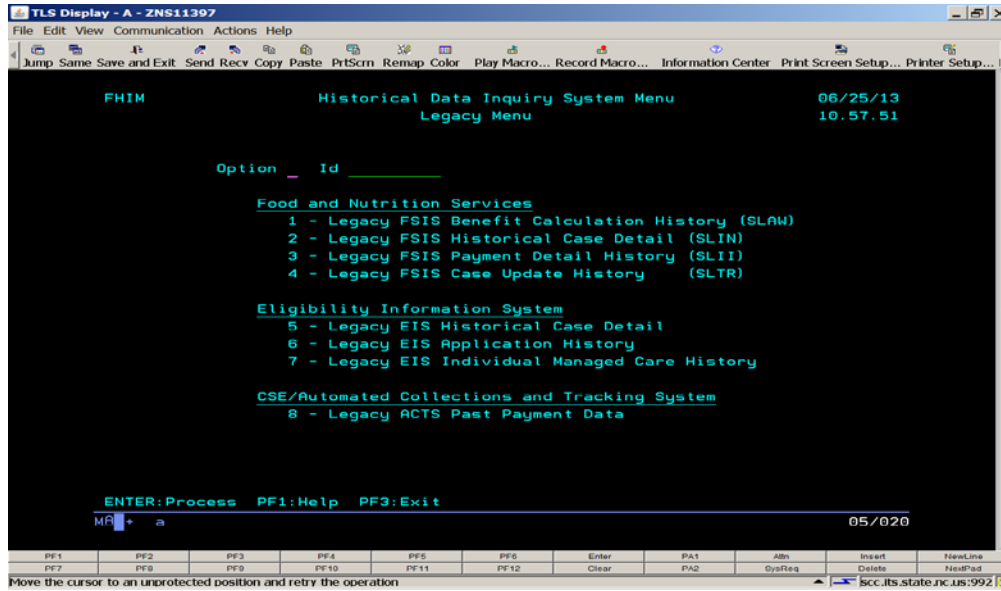
From the banner screen key 'CICSNC16' and press enter to display the logon screen. Enter your **userid**, **bill-code** and **password**. The bill code is **FHI-DHR**. Press enter.



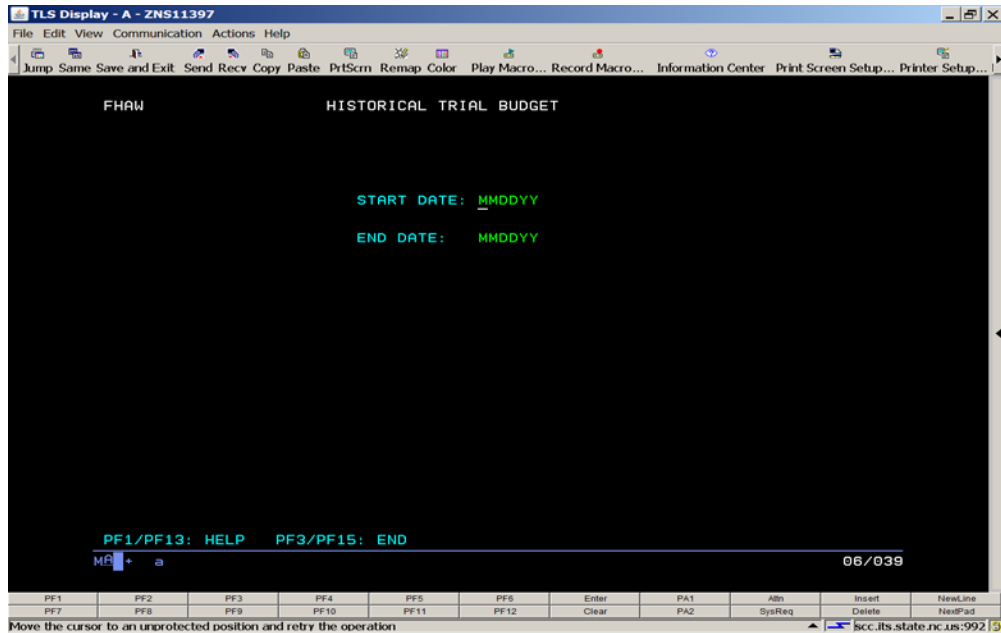
A blank screen will display. On the blank screen key **FHIM** and press enter to display the next screen.



The Main Menu screen will display. There are four options available for inquiry under Food and Nutrition Services. Additional options are displayed on the screen; however, they are unavailable at this time. Navigation keys are displayed at the bottom of the screen.



Choose Option 1 to display the FHAW screen (formerly SLAW).



Choose Option 2 to display the FHIN screen (formerly SLIN).

**FHIN - FNS INQUIRY** PAGE 1 OF 2

ID NUMBER 800007355 4 NAME DONALD DUCK GEO ADM CO 3400  
 TRAN CODE 8 FOH N ADDRESS-1 1412 BREWER RD ACTION CODE 00  
 TRAN DATE 062813 ADDRESS-2 APT A APPL DATE 052112  
 CERT FROM 0512 CTY/STATE WINSTON SALEM NC CERT THRU 1012  
 PH# 3369955906 CD 99 T C ZIP 27127 RECERT ST R CAT 5 START ISS 0512  
 TYPE ISS 9 HH TYPE 1 TOTAL HH 02 CASELOAD 000  
 WORKER 119 RECD NBR 196 E & T ADEQ NOTICE  
 WFFA-1 WFFA-2 WFFA-3 PA MEMBR 00  
 CTY CS# 0008251 VUL/TYPE VE CLAIM CLAIM COLL 0000  
 HH RESRV 0000000 PRO ALLOT REG DELAY NO PRORATE  
 RENT/MOR 45000 RE TAXES 00000 HH INS 00000 UTILITIES 36100  
 UTL TYPE 1 OTHR EXP 00000 TTL SHLTR 0811 EARN INC 0000  
 E I DED 0000 NET EARND 0000 OTHER INC 0000 GROSS INC 0000  
 STD DED 149 ADJ INC 0000 DEP CARE 0050 MED EXP 0000  
 EXCS SHLT 0811 EXPENSE 0519 NET ADJ 0000 HH INCLD 02  
 # REQ MBR 02 TFP 0367 BEN REDU 0000 RESTR ADJ 0000  
 RESTR RSN 00 ALLOTMENT 0367 \$2 BOOKS 01 \$7 BOOKS 00  
 \$10 BOOKS 00 \$40 BOOKS 01 \$50 BOOKS 00 \$85 BOOKS 05  
 RVW DATE1 0000 RVW TYPE1 0 RVW DATE2 1009 RVW TYPE2 C  
 MAIL CODE 04 EXPEDITE 0 PRV ID 000000000 DEP CARE NUM 00  
 PROJ CODE EIS CASE ID P/X:VIEW DEP(X=PG TO VIEW) PF6-FHTR  
 LANG EN DIS IND ENTER-CONTINUE PF3-PREV PF4-FHII

MA a 01/002

PF13 PF14 PF15 PF16 PF17 PF18 Enter EndFid Ertnp Reset  
 PF19 PF20 PF21 PF22 PF23 PF24 Clear ErFid ErEOF NextPad

Move the cursor to an unprotected position and retry the operation

Choose Option 3 to display the FHII screen (formerly SLII). Use the PF4 key to toggle from FHII to FHIN and from FHIN to FHII.

**FHII LEGACY FSIS PAYMENT DETAIL HISTORY**

ID: 800007355 ISSUE CYCLE: 04 TYPE: 9  
 NAME: DONALD DUCK ACTION CODE: 00  
 ADDRESS: 1412 BREWER RD PH#: 3369955906 CD: 99 T: C  
 APT A TRANS CODE: 8 DATE: 062813  
 WINSTON SALEM NC 27127 CERT FROM: 0512 TO: 1012  
 LAST AUTH: 080112 AMOUNT: 0337 BEN MO: 0812  
 EIS ID:

CTY	AMOUNT	DATE AUTH	BEN MO	TYPE	BENEFIT ISSUED	ISSUANCE SYSTEM	STATUS/ ATP NO	ADTC (Y/N)
34	0181	030113	0313	REG	031113	EBT	ISSUED N	
34	0181	020113	0213	REG	021113	EBT	ISSUED N	
34	0187	010113	0113	REG	011113	EBT	ISSUED N	
34	0187	120112	1212	REG	121112	EBT	ISSUED N	
34	0187	110112	1112	REG	111112	EBT	ISSUED N	
34	0354	100112	1012	REG	101112	EBT	ISSUED N	
34	0337	090112	0912	REG	091112	EBT	ISSUED N	
34	0337	080112	0812	REG	081112	EBT	ISSUED N	

PF4 - TRANSFER TO FHIN  
 "S" AND ENTER TO DISPLAY TRI-MONTHLY ISSUANCE DETAIL WHEN ADTC FLAG = 'Y'  
 USE PF7/8 TO VIEW HIST DATA

MA a 01/001

PF13 PF14 PF15 PF16 PF17 PF18 Enter EndFid Ertnp Reset  
 PF19 PF20 PF21 PF22 PF23 PF24 Clear ErFid ErEOF NextPad

Move the cursor to an unprotected position and retry the operation

Choose Option 4 to display the FHTR screen (formerly SLTR). Enter the case ID or user ID and the date range to display the tracking history. Start Date must be within the past six years.

TLS Display - A - ZNS11397

File Edit View Communication Actions Help

Jump Same Save and Exit Send Recv Copy Paste PrtScrn Remap Color Play Macro... Record Macro... Information Center Print Screen Setup... Printer Setup...

```

FHTR-FHI337A          LEGACY FSIS CASE UPDATE HISTORY          DATE 06/25/13
                      (CICS -- TRANSACTION TRACKING -- FHTR)

***** TRANSACTION INQUIRY *****

PLEASE ENTER A 9 DIGIT CASE ID - _
OR
PLEASE ENTER A 7 DIGIT USER ID -

(DATE BEGIN OR DATE RANGE - CCYYMMDD -- MANDATORY )
PLEASE ENTER AN 8 DIGIT START DATE -          END DATE -

***** SPECIFIC COUNTY INQUIRY *****

(INDIVIDUAL COUNTY SELECT - 99 -- OPTIONAL )
PLEASE ENTER A 2 DIGIT COUNTY NUMBER -

F3=CANCEL                      "ENTER" KEY = CONTINUE
    
```

More the cursor to an unprotected position and retry the operation

PF1 PF2 PF3 PF4 PF5 PF6 Enter PA1 Alt Insert NewLine  
 PF7 PF8 PF9 PF10 PF11 PF12 Clear PA2 SysReq Delete NextPad

More the cursor to an unprotected position and retry the operation

sc.its.state.nc.us:992

TLS Display - C - ZNS21870

File Edit View Communication Actions Help

Jump Same Save and Exit Send Recv Copy Paste PrtScrn Remap Color Play Macro... Record Macro... Information Center Print Screen Setup... Printer Setup...

```

FHTR          FOOD AND NUTRITION SERVICES          DATE 06/19/13
              TRANSACTION TRACKING SELECTION SCREEN          PAGE 01

PLACE AN S BESIDE THE DESIRED SELECTION AND PRESS ENTER
CASEID      800007355

              TMP
SEL TC      TRANS  TRANS  REC  WKR  WKR  USER  ALLOT  SCRN  ENTRY  ISS
              DATE   TIME   NO  NO   NO  ID      ALLOT  SCRN  DATE   AMT
-
8  01312013  25:00:0266  197  334  SLA613  0181  FEBMC
6  10302012  24:00:0008  196  334  SLA106  0187  BTCH
6  10302012  12:22:2032  196  334  HRSS4KH  0187  SLUP
8  09282012  24:00:1273  195  334  SLA608  0354  STUTMC
6  05242012  24:00:0013  194  334  SLA106  0337  BTCH
6  05242012  15:00:5649  194  334  HRSS4KH  0337  SLUP
8  03132012  24:00:0016  193  334  SLA106  0335  BTCH
8  03132012  17:11:5082  193  334  HRSS4KH  0335  SLUP
8  01312012  25:00:1174  192  334  SLA613  0335  FEBMC
8  01312012  25:00:1174  192  334  SLA613  0335  FEBMC
6  10282011  24:00:0020  191  334  SLA106  0346  BTCH
6  10282011  24:00:0020  191  334  SLA106  0346  BTCH

ENTER=PROCESS  PF3=CLEAR/END  PF7=SCROLL BACKWARD  PF8=SCROLL FORWARD
    
```

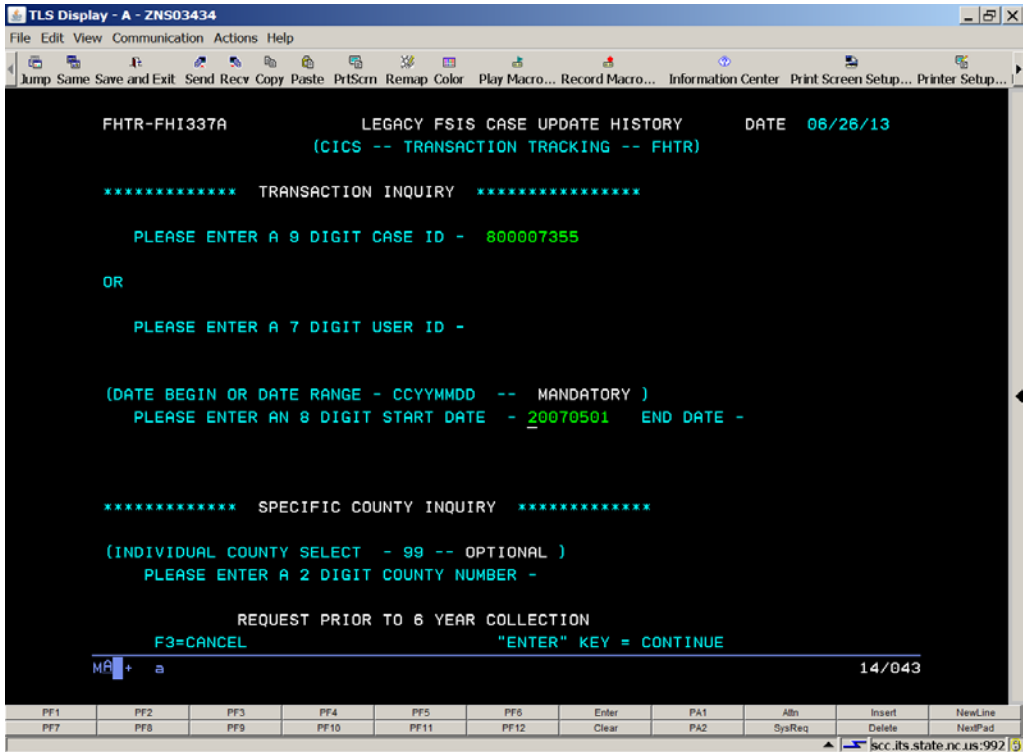
More the cursor to an unprotected position and retry the operation

PF1 PF2 PF3 PF4 PF5 PF6 Enter PA1 Alt Insert NewLine  
 PF7 PF8 PF9 PF10 PF11 PF12 Clear PA2 SysReq Delete NextPad

More the cursor to an unprotected position and retry the operation

sc.its.state.nc.us:992

If a Start Date prior to six years is entered, the message "REQUEST PRIOR TO 6 YEAR COLLECTION" is displayed.



### III. IMPLEMENTATION

The Historical Data Inquiry System will be available July 1, 2013.

If you have any questions, contact DSS Information Support staff at 919-527-6270.

Sincerely,

Hank Bowers, Chief  
Performance Management/Reporting  
and Evaluation Management Section