

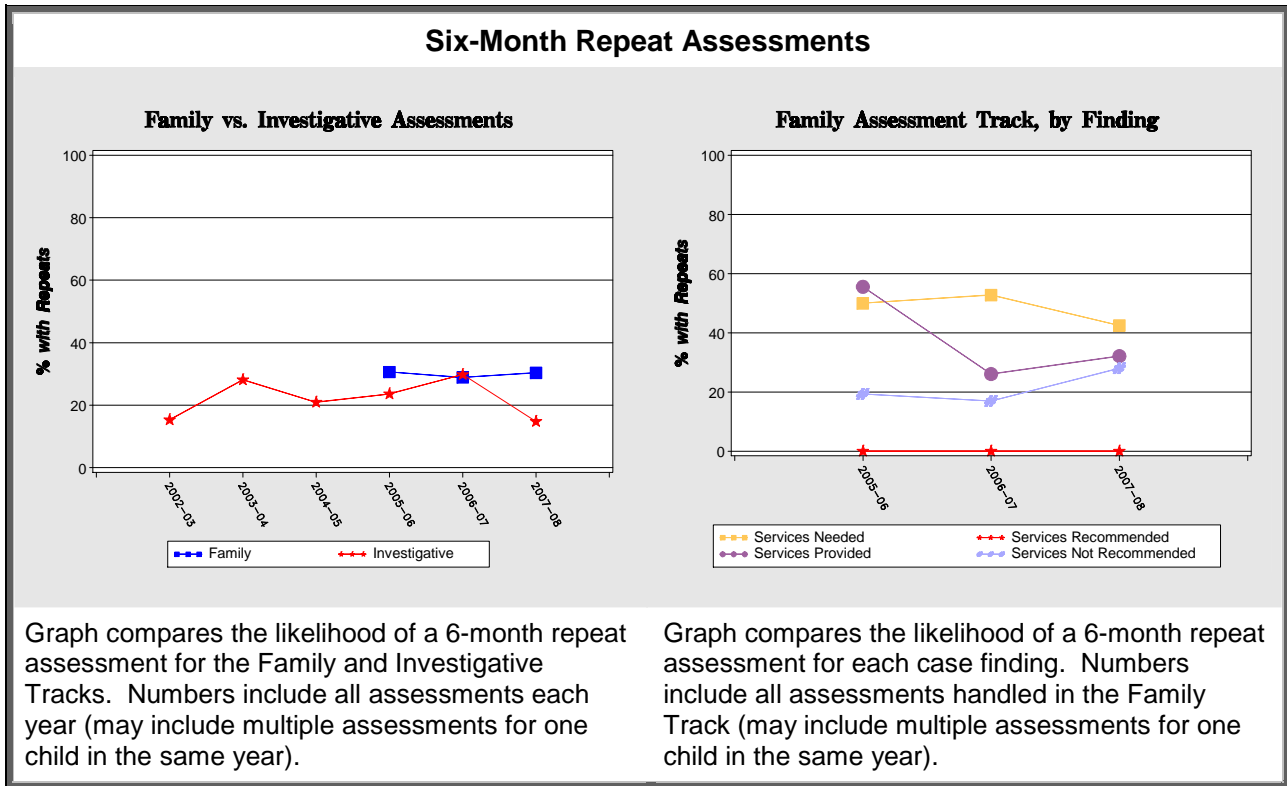
# Allegheny County 2008

## MRS Evaluation Fact Sheet

### Child Safety

|   | Fiscal Year |       |       |       | Mean Pre-MRS<br>02-03 thru 04-05 |                       | Mean MRS<br>06-07 thru 07-08 |          | % Change |          |
|---|-------------|-------|-------|-------|----------------------------------|-----------------------|------------------------------|----------|----------|----------|
|   | 02-03       | 04-05 | 06-07 | 07-08 | County                           | Comp Grp <sup>1</sup> | County                       | Comp Grp | County   | Comp Grp |
|   |             |       |       |       |                                  |                       |                              |          |          |          |
| Rate of Assessments <sup>2</sup>                | 52.2        | 81.9  | 89.9  | 107.8 | 65.1                             | 85.5                  | 98.9                         | 87.5     | 51.9     | 2.3      |
| Rate of Substantiations <sup>3</sup>            | 14.0        | 30.5  | 31.2  | 33.0  | 22.5                             | 26.2                  | 32.1                         | 20.4     | 42.9     | -22.2    |
| Rate of Substantiated Abuse <sup>4</sup>        | 0.5         | 1.5   | 4.3   | 6.1   | 1.1                              | 2.2                   | 5.2                          | 2.7      | 358.7    | 22.8     |
| 6 Month Repeat Assessment Rate <sup>5</sup>     | 17.6        | 18.9  | 25.8  | 25.8  | 22.0                             | 19.3                  | 25.8                         | 17.6     | 17.4     | -9.0     |
| 6 Month Repeat Substantiation Rate <sup>6</sup> | 0.0         | 17.5  | 27.3  | 22.9  | 13.6                             | 9.7                   | 25.1                         | 9.2      | 84.0     | -5.3     |

Note: MRS was initiated in January 2006.



<sup>1</sup> County comparison groups were chosen based on county rates of assessments and child population. Counties in comparison group: Allegheny, Beaufort, Carteret, Madison, McDowell, Mitchell, and Montgomery.

<sup>2</sup> Rates are per 1,000 children residing in county.

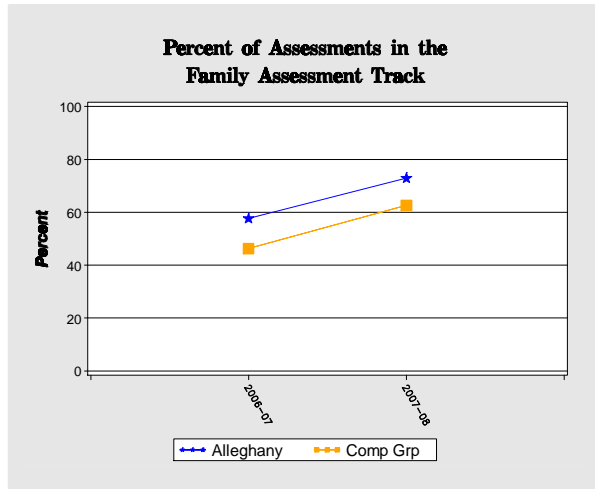
<sup>3</sup> Substantiations include findings of Services Needed.

<sup>4</sup> Abuse always includes substantiations of "Abuse and Neglect."

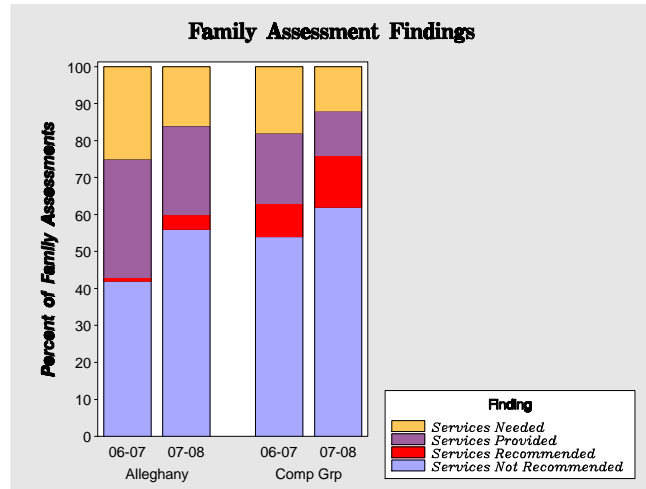
<sup>5</sup> Repeat Assessment is defined as a child who is involved in more than one accepted report within 6 months.

<sup>6</sup> Repeat Substantiation is defined as a child who has a substantiated report within 6 months of another substantiated report.

## Family Assessment Track



Percentage of assessments assigned to the Family Assessment Track. Graph compares select county to the average of the comparison counties from fiscal year 2006-2007 to 2007-2008.



Breakdown of findings within the Family Assessment Track for fiscal years 2006-2007 and 2007-2008 as compared to the average of the comparison counties.

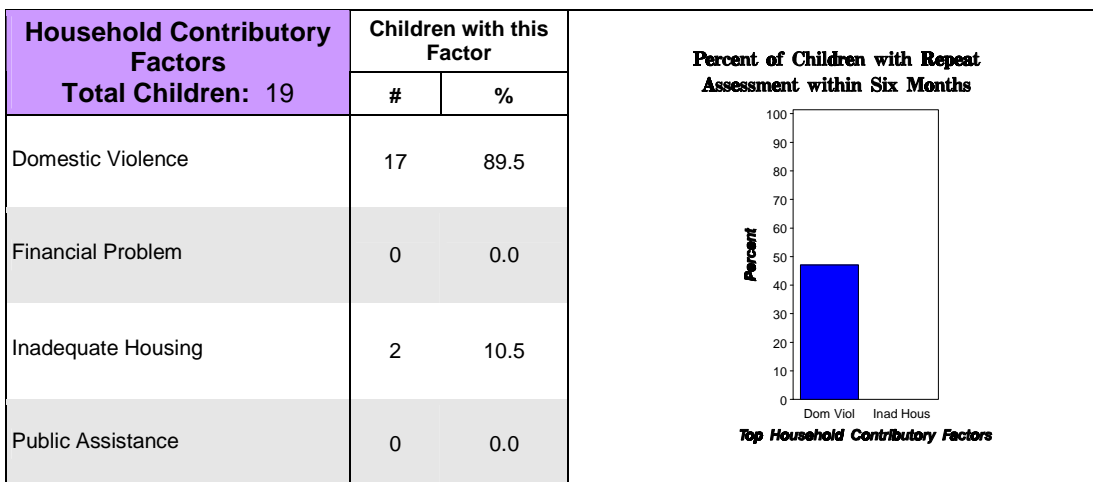
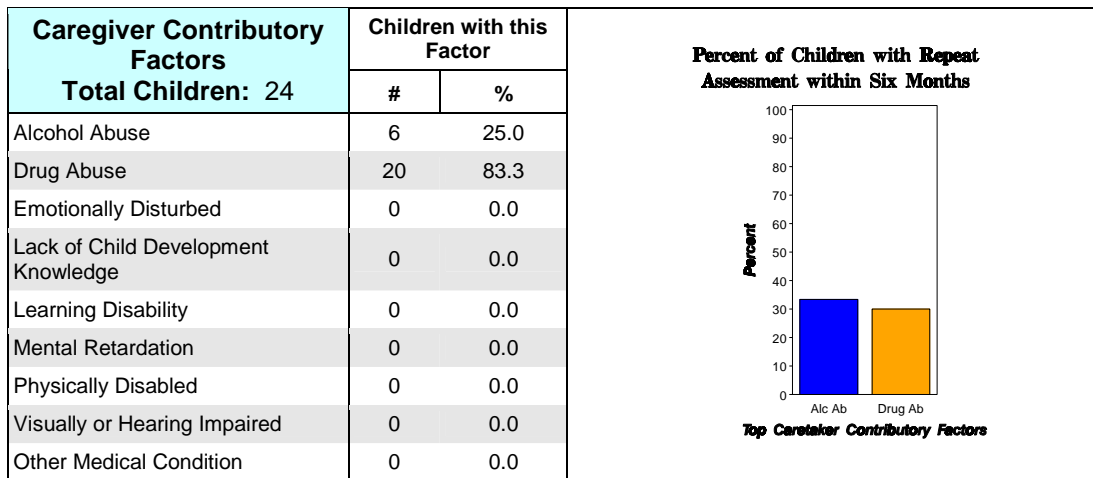
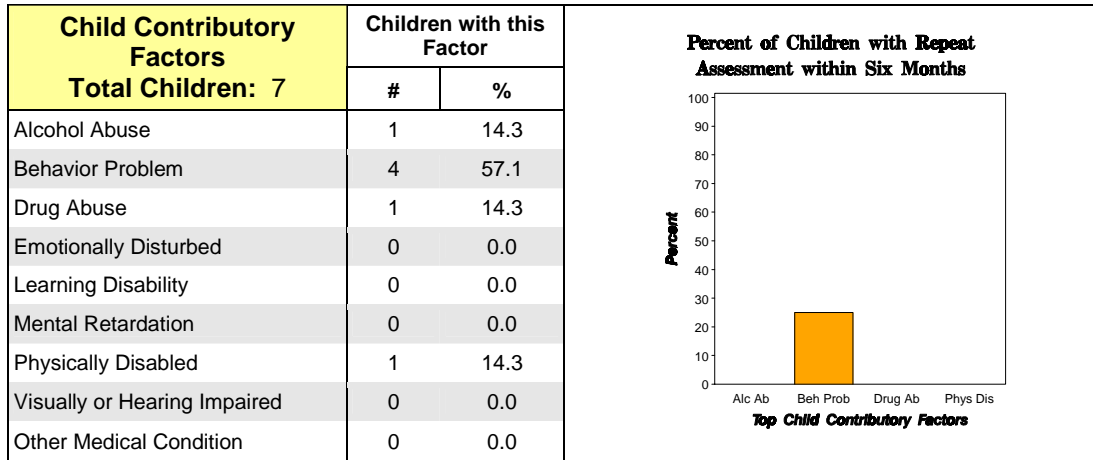
## Timeliness of Response and Time to Case Decision

|  | Fiscal Year |       |       |       | Mean Pre-MRS<br>02-03 thru 04-05 |          | Mean MRS<br>06-07 thru 07-08 |          | % Change |          |
|--|-------------|-------|-------|-------|----------------------------------|----------|------------------------------|----------|----------|----------|
|  | 02-03       | 04-05 | 06-07 | 07-08 | County                           | Comp Grp | County                       | Comp Grp | County   | Comp Grp |
|  |             |       |       |       |                                  |          |                              |          |          |          |
| <b>% On-time Response<sup>7</sup></b>      |             |       |       |       |                                  |          |                              |          |          |          |
| Overall                                    | 98.4        | 100.0 | 95.2  | 98.1  | 99.0                             | 94.7     | 96.7                         | 96.1     | -2.4     | 1.5      |
| Reports of Neglect                         | 100.0       | 100.0 | 94.9  | 98.4  | 100.0                            | 94.9     | 96.7                         | 96.3     | -3.3     | 1.4      |
| Reports of Abuse                           | 93.8        | 100.0 | 96.4  | 96.9  | 96.1                             | 93.8     | 96.7                         | 94.1     | 0.6      | 0.3      |
| <b>% On-time Case Decision<sup>8</sup></b> |             |       |       |       |                                  |          |                              |          |          |          |
| Overall                                    | 91.8        | 88.6  | 89.7  | 83.2  | 91.7                             | 57.7     | 86.5                         | 63.3     | -5.8     | 9.7      |
| Family Assessment Track                    | -           | -     | 94.3  | 82.6  | -                                | -        | 88.4                         | 72.2     | -        | -        |
| Investigative Track                        | -           | -     | 83.9  | 84.8  | -                                | -        | 84.4                         | 56.3     | -        | -        |

<sup>7</sup> On-time Response is calculated as response within 24 hours for reports of Abuse, and within 72 hours for reports of Neglect.

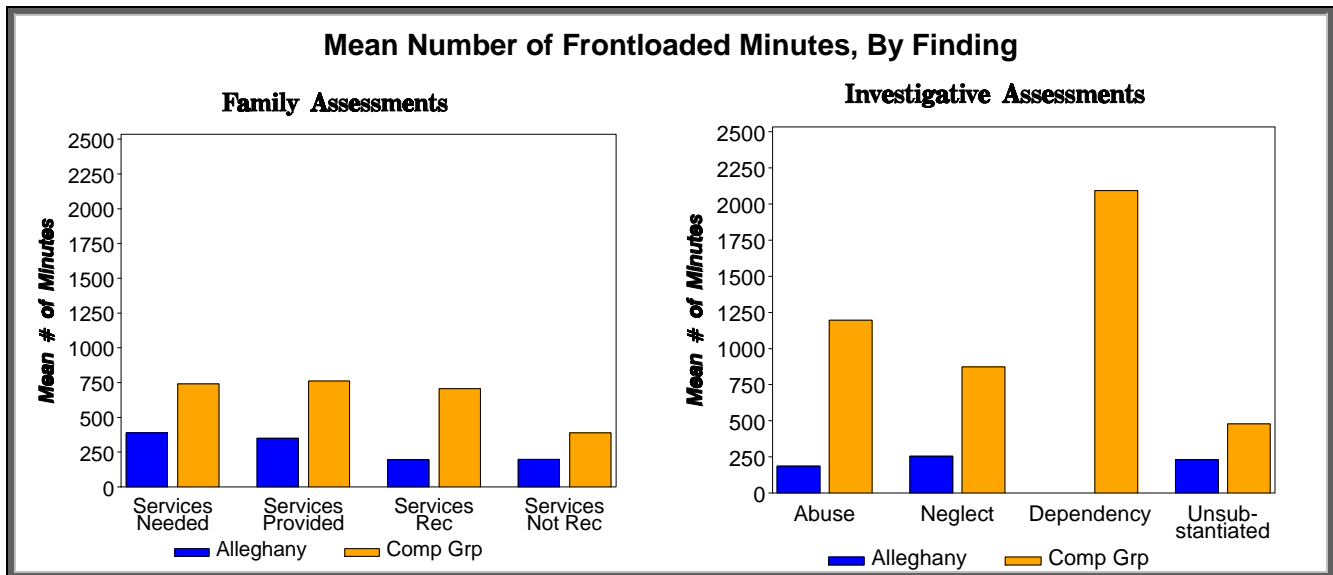
<sup>8</sup> On-time Case Decision is calculated as decision made within 30 days for pre-MRS and Investigative Track assessments, and within 45 days for Family Track assessments.

## Primary Contributory Factors for Fiscal Year 2007-2008



Tables highlight the percentage of children with a finding of Substantiated or Services Needed with a Primary Contributory Factor recorded in 2007-2008. Contributory Factors are separated into categories depending on whether the factor is specific to the child, caregiver or household. **Note that 54.5% of assessments with findings of Substantiated or Services Needed were NOT assigned any Primary Contributory Factors.** Therefore, the data above may not be representative of the entire population. Repeat Assessment is defined as a child who received a finding of Substantiated or Services Needed with an identified Contributory Factor during fiscal year 2007-2008 and who was involved in another accepted report within 6 months of the substantiated report. The % reflects percentage of children with a given Contributory Factor who had a Repeat Assessment.

## Frontloading Services and Other Information for Fiscal Year 2007-2008



### Status of Data Collection and Reporting

- ➔ A total of **328** assessments were reported to the Central Registry.
- ➔ Of these, **178** assessments (**54.3%**) were reported through the web-based Multiple Response Database.
- ➔ So, **150** assessments (**45.7%**) reported to the Central Registry were NOT registered in the Multiple Response Database.
- ➔ Of the 178 assessments reported to both the Central Registry and the Multiple Response Database, **79.2%** included some information about MRS services that were needed, referred or provided.
- ➔ For the assessments with some MRS services information, **58.7%** of the reported services were referred and/or provided with no indication of the service being needed.

#### MRS Services Needed, Referred, and Provided

➔ Of the assessments with reported services, the top 5 identified service needs in the select county accounted for **48.0%** of all identified service needs.

Top 5 needs, and how successfully they were referred or provided:

|                                       | #  | % Referred | % Provided |
|---------------------------------------|----|------------|------------|
| Access community resources            | 42 | 85.7       | 97.6       |
| Parenting Skills                      | 24 | 62.5       | 41.7       |
| Family Support/Family Resource Center | 22 | 31.8       | 40.9       |
| Family Counseling                     | 21 | 47.6       | 52.4       |
| Day Care                              | 20 | 30.0       | 85.0       |

#### Comparison of Blended v. Not Blended 210/215 Cases

|              | % of Children With a Repeat Assessment | Mean # of Minutes of Frontloaded Services |
|--------------|--|---|
| Blended      | 14.2                                   | 746.8                                     |
| Team Blended | 17.8                                   | 894.5                                     |
| Not Blended  | 19.5                                   | 883.1                                     |

Data combined for all counties in the comparison group. Includes all assessments with transfer information.