

Beaufort County 2008

MRS Evaluation Fact Sheet

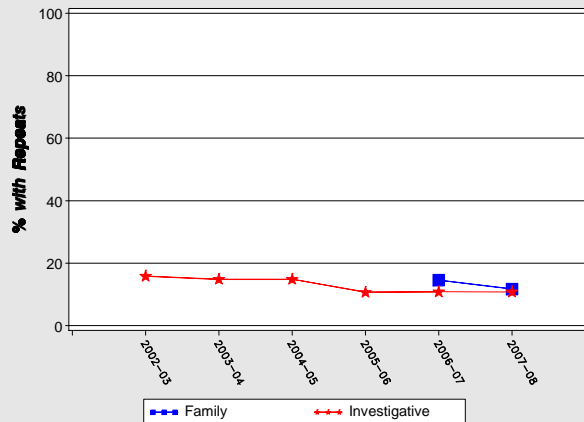
Child Safety

	Fiscal Year				Mean Pre-MRS 02-03 thru 04-05		Mean MRS 06-07 thru 07-08		% Change	
	02-03	04-05	06-07	07-08	County	Comp Grp ¹	County	Comp Grp	County	Comp Grp
Rate of Assessments ²	74.3	81.5	78.9	70.7	74.7	85.5	74.8	87.5	0.1	2.3
Rate of Substantiations ³	23.2	22.5	22.8	14.2	22.1	26.2	18.5	20.4	-16.6	-22.2
Rate of Substantiated Abuse ⁴	2.1	1.7	2.9	0.7	2.1	2.2	1.8	2.7	-15.1	22.8
6 Month Repeat Assessment Rate ⁵	14.7	13.0	12.1	11.3	14.2	19.3	11.7	17.6	-17.6	-9.0
6 Month Repeat Substantiation Rate ⁶	7.1	5.6	3.9	3.5	5.8	9.7	3.7	9.2	-36.7	-5.3

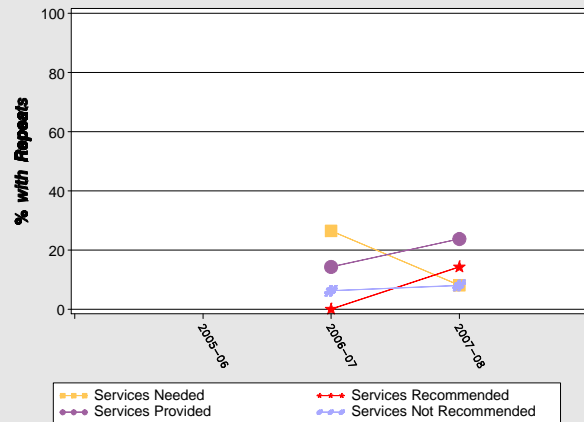
Note: MRS was initiated in January 2006.

Six-Month Repeat Assessments

Family vs. Investigative Assessments



Family Assessment Track, by Finding



Graph compares the likelihood of a 6-month repeat assessment for the Family and Investigative Tracks. Numbers include all assessments each year (may include multiple assessments for one child in the same year).

Graph compares the likelihood of a 6-month repeat assessment for each case finding. Numbers include all assessments handled in the Family Track (may include multiple assessments for one child in the same year).

¹ County comparison groups were chosen based on county rates of assessments and child population. Counties in comparison group: Alleghany, Beaufort, Carteret, Madison, McDowell, Mitchell, and Montgomery.

² Rates are per 1,000 children residing in county.

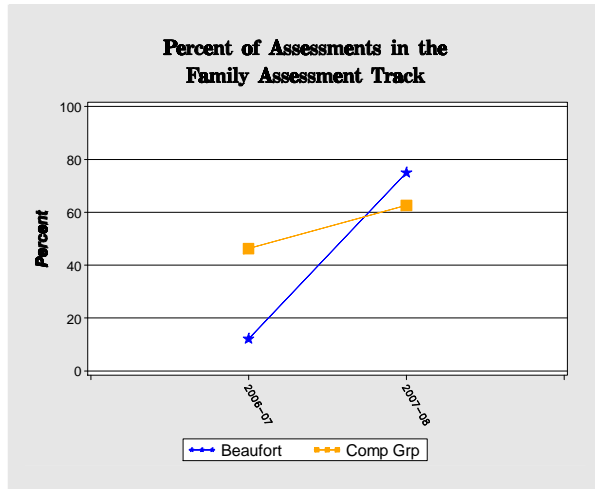
³ Substantiations include findings of Services Needed.

⁴ Abuse always includes substantiations of "Abuse and Neglect."

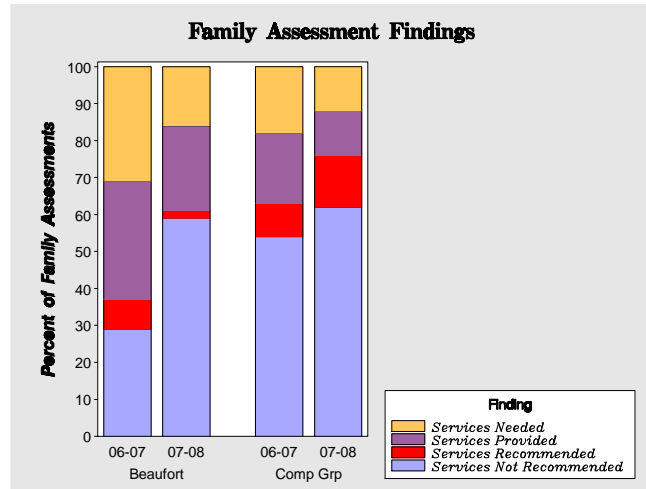
⁵ Repeat Assessment is defined as a child who is involved in more than one accepted report within 6 months.

⁶ Repeat Substantiation is defined as a child who has a substantiated report within 6 months of another substantiated report.

Family Assessment Track



Percentage of assessments assigned to the Family Assessment Track. Graph compares select county to the average of the comparison counties from fiscal year 2006-2007 to 2007-2008.



Breakdown of findings within the Family Assessment Track for fiscal years 2006-2007 and 2007-2008 as compared to the average of the comparison counties.

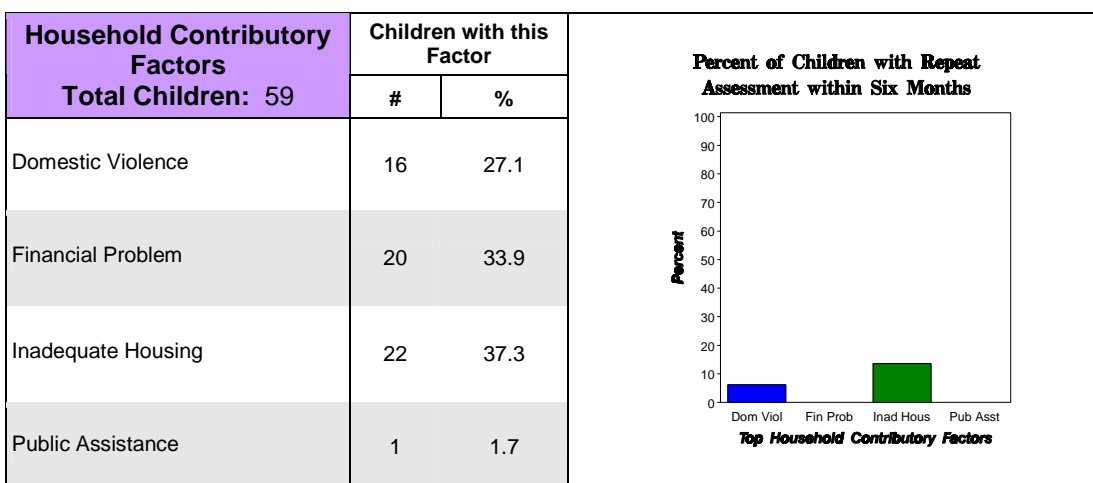
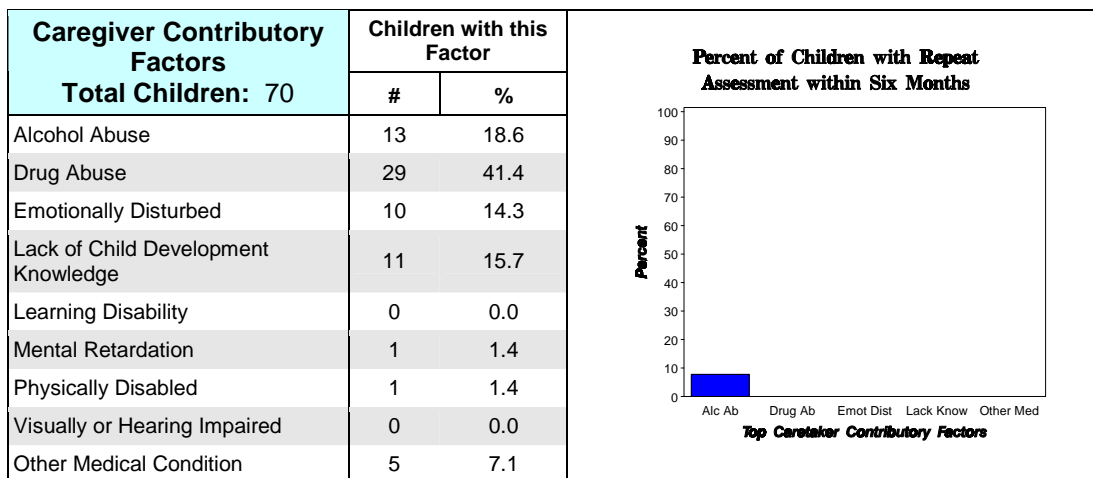
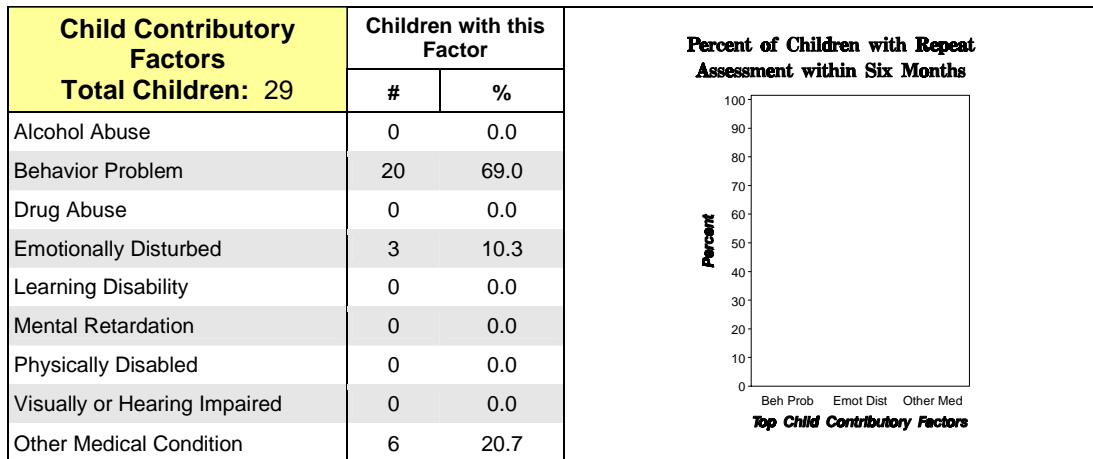
Timeliness of Response and Time to Case Decision

	Fiscal Year				Mean Pre-MRS 02-03 thru 04-05		Mean MRS 06-07 thru 07-08		% Change	
	02-03	04-05	06-07	07-08	County	Comp Grp	County	Comp Grp	County	Comp Grp
% On-time Response⁷										
Overall	97.6	95.1	96.8	97.3	96.3	94.7	97.1	96.1	0.8	1.5
Reports of Neglect	97.7	95.2	96.8	97.2	96.5	94.9	97.0	96.3	0.4	1.4
Reports of Abuse	96.2	93.1	97.4	100.0	93.4	93.8	98.7	94.1	5.7	0.3
% On-time Case Decision⁸										
Overall	49.8	35.6	32.5	36.1	41.5	57.7	34.3	63.3	-17.2	9.7
Family Assessment Track	-	-	58.8	38.0	-	-	48.4	72.2	-	-
Investigative Track	-	-	29.0	31.4	-	-	30.2	56.3	-	-

⁷ On-time Response is calculated as response within 24 hours for reports of Abuse, and within 72 hours for reports of Neglect.

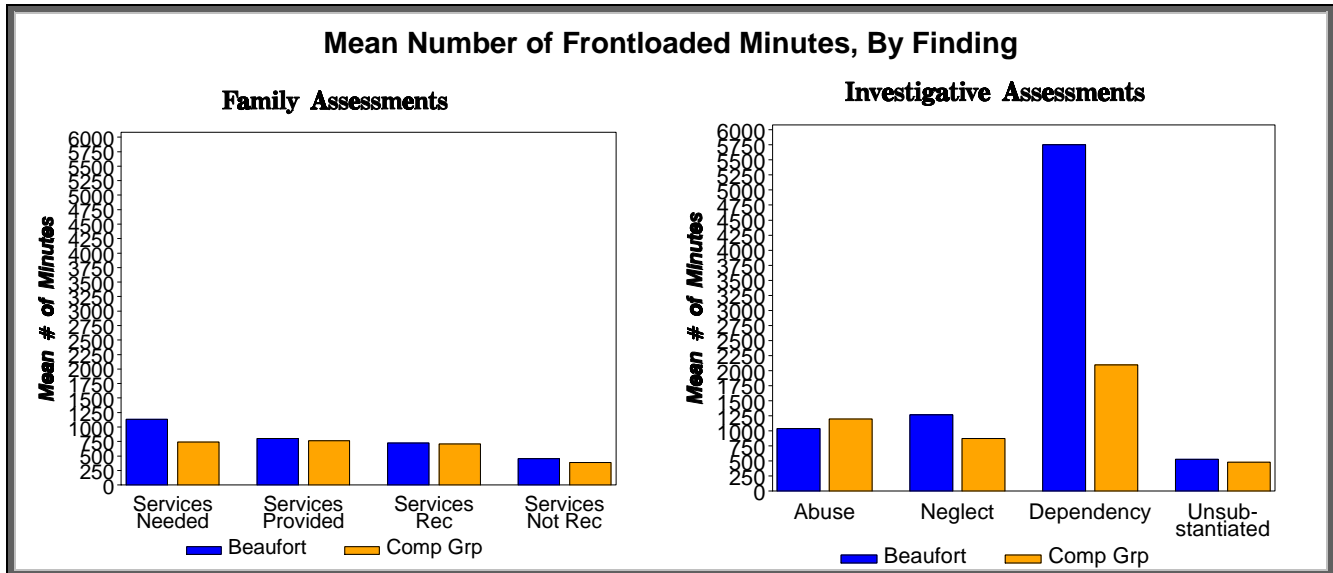
⁸ On-time Case Decision is calculated as decision made within 30 days for pre-MRS and Investigative Track assessments, and within 45 days for Family Track assessments.

Primary Contributory Factors for Fiscal Year 2007-2008



Tables highlight the percentage of children with a finding of Substantiated or Services Needed with a Primary Contributory Factor recorded in 2007-2008. Contributory Factors are separated into categories depending on whether the factor is specific to the child, caregiver or household. **Note that 33.3% of assessments with findings of Substantiated or Services Needed were NOT assigned any Primary Contributory Factors.** Therefore, the data above may not be representative of the entire population. Repeat Assessment is defined as a child who received a finding of Substantiated or Services Needed with an identified Contributory Factor during fiscal year 2007-2008 and who was involved in another accepted report within 6 months of the substantiated report. The % reflects percentage of children with a given Contributory Factor who had a Repeat Assessment.

Frontloading Services and Other Information for Fiscal Year 2007-2008



Status of Data Collection and Reporting

- ➔ A total of **831** assessments were reported to the Central Registry.
- ➔ Of these, **58** assessments (**7.0%**) were reported through the web-based Multiple Response Database.
- ➔ So, **773** assessments (**93.0%**) reported to the Central Registry were NOT registered in the Multiple Response Database.
- ➔ Of the 58 assessments reported to both the Central Registry and the Multiple Response Database, **43.1%** included some information about MRS services that were needed, referred or provided.
- ➔ For the assessments with some MRS services information, **30.2%** of the reported services were referred and/or provided with no indication of the service being needed.

MRS Services Needed, Referred, and Provided

➔ Of the assessments with reported services, the top 5 identified service needs in the select county accounted for **70.0%** of all identified service needs.

Top 5 needs, and how successfully they were referred or provided:

	#	% Referred	% Provided
Mental Health	13	92.3	100.0
Access community resources	9	100.0	100.0
Case Planning/Case Management	7	85.7	57.1
Individual Counseling	7	71.4	71.4
Family Counseling	6	16.7	16.7

Comparison of Blended v. Not Blended 210/215 Cases

	% of Children With a Repeat Assessment	Mean # of Minutes of Frontloaded Services
Blended	14.2	746.8
Team Blended	17.8	894.5
Not Blended	19.5	883.1

Data combined for all counties in the comparison group. Includes all assessments with transfer information.