

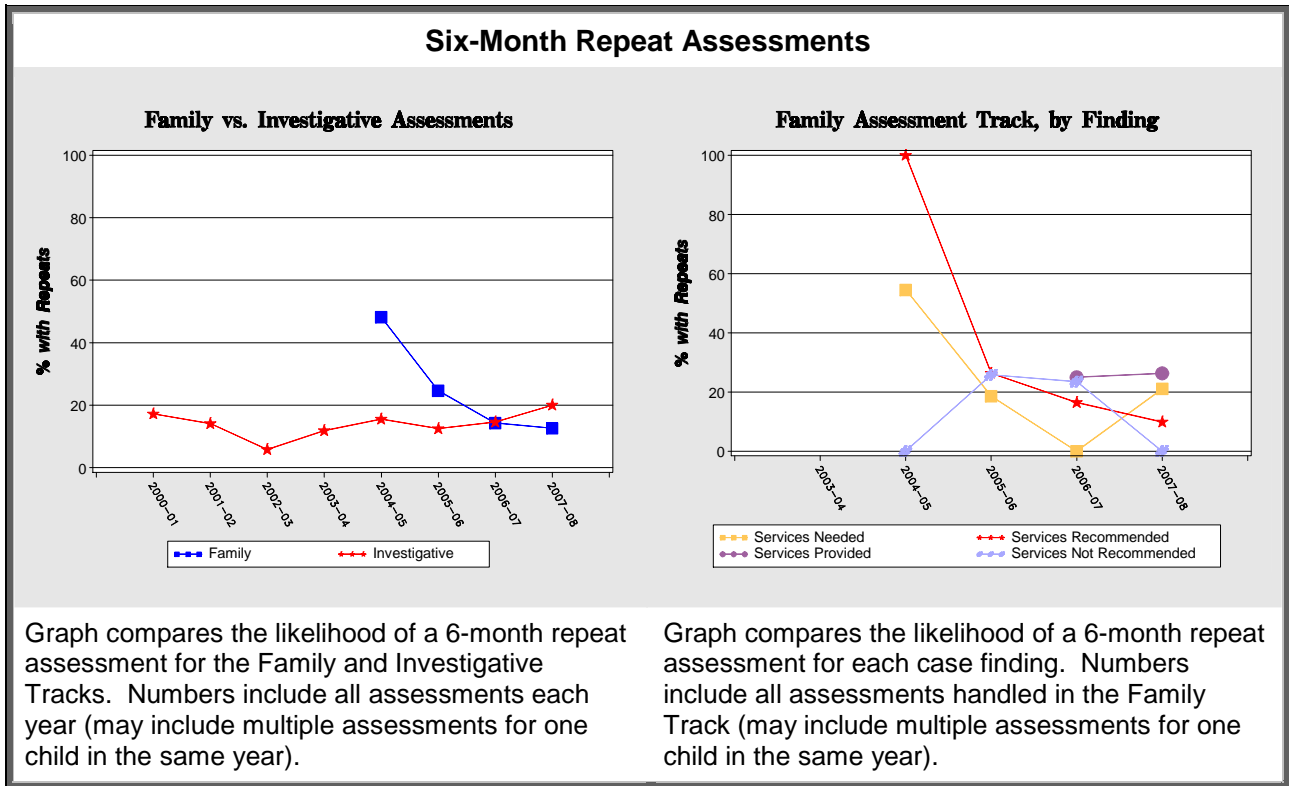
# Clay County 2008

## MRS Evaluation Fact Sheet

### Child Safety

	Fiscal Year				Mean Pre-MRS 00-01 thru 02-03		Mean MRS 05-06 thru 07-08		% Change	
	00-01	02-03	05-06	07-08	County	Comp Grp <sup>1</sup>	County	Comp Grp	County	Comp Grp
Rate of Assessments <sup>2</sup>	64.4	40.5	107.3	92.1	48.1	70.9	96.7	96.9	101.2	36.7
Rate of Substantiations <sup>3</sup>	16.6	4.3	28.3	24.4	9.4	21.4	23.6	30.4	150.5	42.0
Rate of Substantiated Abuse <sup>4</sup>	3.1	0.0	1.2	6.7	1.2	2.5	3.2	3.9	158.0	57.6
6 Month Repeat Assessment Rate <sup>5</sup>	16.2	6.1	23.1	15.1	10.5	16.0	17.7	18.0	67.9	12.4
6 Month Repeat Substantiation Rate <sup>6</sup>	0.0	0.0	6.1	15.9	11.1	9.0	7.3	7.4	-33.9	-18.1

Note: MRS was initiated in January 2004.



<sup>1</sup> County comparison groups were chosen based on county rates of assessments and child population. Counties in comparison group: Cherokee, Clay, Currituck, Graham, Swain, and Yancey.

<sup>2</sup> Rates are per 1,000 children residing in county.

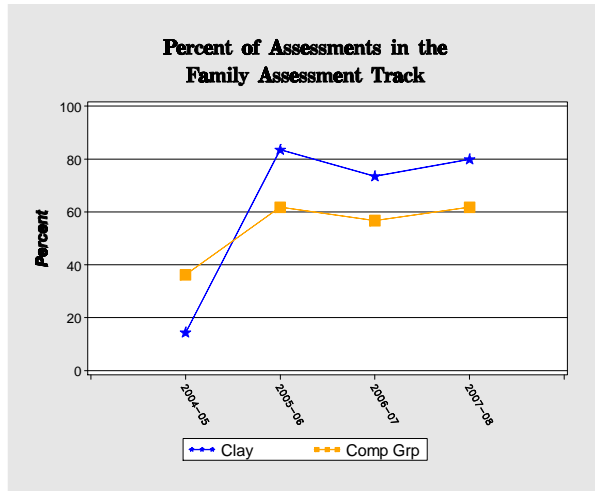
<sup>3</sup> Substantiations include findings of Services Needed.

<sup>4</sup> Abuse always includes substantiations of "Abuse and Neglect."

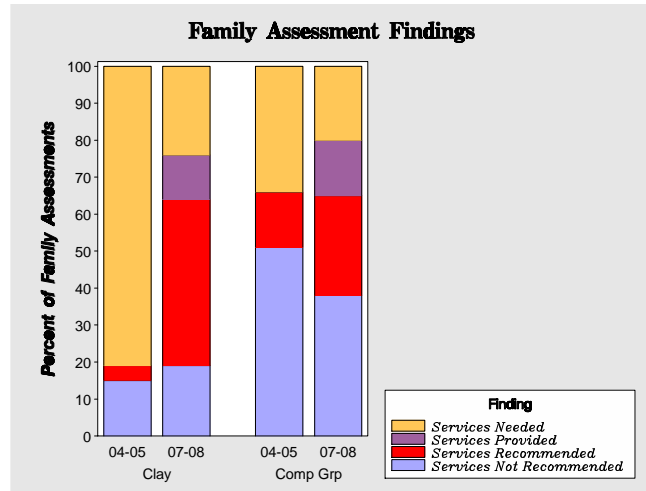
<sup>5</sup> Repeat Assessment is defined as a child who is involved in more than one accepted report within 6 months.

<sup>6</sup> Repeat Substantiation is defined as a child who has a substantiated report within 6 months of another substantiated report.

## Family Assessment Track



Percentage of assessments assigned to the Family Assessment Track. Graph compares select county to the average of the comparison counties from fiscal year 2004-2005 to 2007-2008.



Breakdown of findings within the Family Assessment Track for fiscal years 2004-2005 and 2007-2008 as compared to the average of the comparison counties.

## Timeliness of Response and Time to Case Decision

	Fiscal Year				Mean Pre-MRS 00-01 thru 02-03		Mean MRS 05-06 thru 07-08		% Change	
	00-01	02-03	05-06	07-08	County	Comp Grp	County	Comp Grp	County	Comp Grp
<b>% On-time Response<sup>7</sup></b>										
Overall	98.1	91.3	89.9	91.9	96.5	94.5	92.5	94.2	-4.1	-0.3
Reports of Neglect	97.8	90.7	90.7	91.9	96.2	94.9	92.9	94.5	-3.4	-0.4
Reports of Abuse	100.0	100.0	81.8	92.3	100.0	93.6	88.8	91.8	-11.2	-1.9
<b>% On-time Case Decision<sup>8</sup></b>										
Overall	79.2	82.6	76.5	60.6	83.6	67.2	72.4	68.6	-13.3	2.0
Family Assessment Track	-	-	81.2	63.8	-	-	77.0	74.9	-	-
Investigative Track	-	-	50.0	47.4	-	-	51.8	60.4	-	-

<sup>7</sup> On-time Response is calculated as response within 24 hours for reports of Abuse, and within 72 hours for reports of Neglect.

<sup>8</sup> On-time Case Decision is calculated as decision made within 30 days for pre-MRS and Investigative Track assessments, and within 45 days for Family Track assessments.

## Primary Contributory Factors for Fiscal Year 2007-2008

Child Contributory Factors Total Children: 4	Children with this Factor	
	#	%
Alcohol Abuse	0	0.0
Behavior Problem	1	25.0
Drug Abuse	0	0.0
Emotionally Disturbed	1	25.0
Learning Disability	0	0.0
Mental Retardation	0	0.0
Physically Disabled	1	25.0
Visually or Hearing Impaired	0	0.0
Other Medical Condition	1	25.0

**Percent of Children with Repeat Assessment within Six Months**

Factor	Percent
Beh Prob	0
Emot Dist	0
Other Med	0
Phys Dis	0

**Top Child Contributory Factors**

Caregiver Contributory Factors Total Children: 6	Children with this Factor	
	#	%
Alcohol Abuse	2	33.3
Drug Abuse	4	66.7
Emotionally Disturbed	0	0.0
Lack of Child Development Knowledge	0	0.0
Learning Disability	0	0.0
Mental Retardation	0	0.0
Physically Disabled	0	0.0
Visually or Hearing Impaired	0	0.0
Other Medical Condition	0	0.0

**Percent of Children with Repeat Assessment within Six Months**

Factor	Percent
Alc Ab	50
Drug Ab	50

**Top Caretaker Contributory Factors**

Household Contributory Factors Total Children: 2	Children with this Factor	
	#	%
Domestic Violence	0	0.0
Financial Problem	2	100.0
Inadequate Housing	0	0.0
Public Assistance	0	0.0

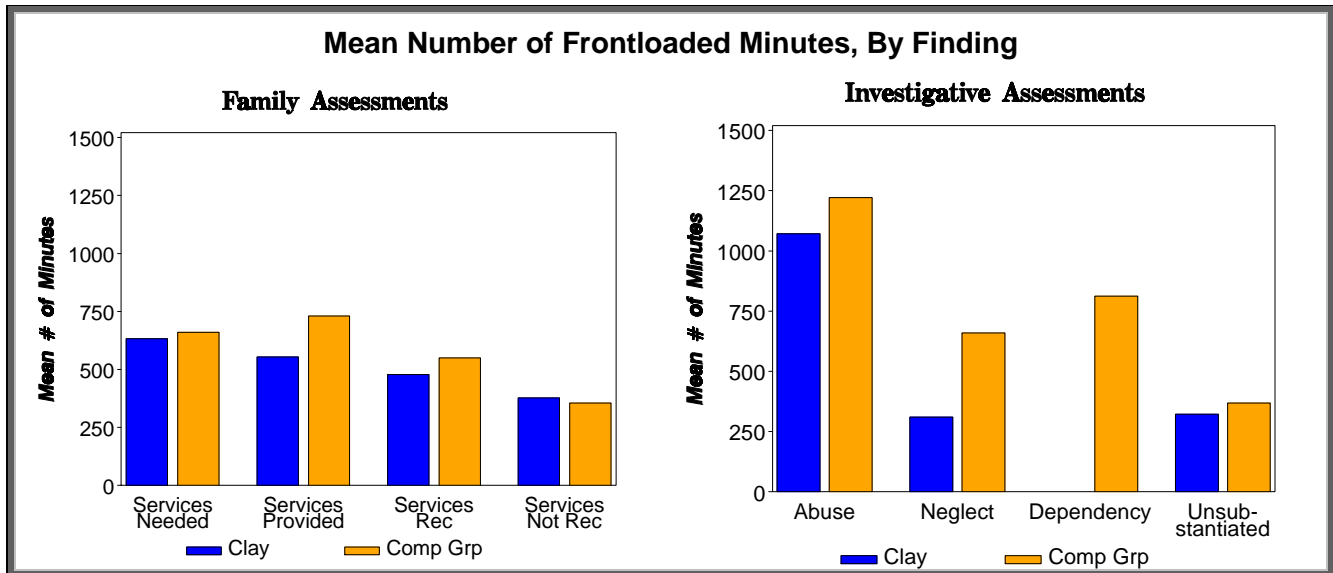
**Percent of Children with Repeat Assessment within Six Months**

Factor	Percent
Fin Prob	50

**Top Household Contributory Factors**

Tables highlight the percentage of children with a finding of Substantiated or Services Needed with a Primary Contributory Factor recorded in 2007-2008. Contributory Factors are separated into categories depending on whether the factor is specific to the child, caregiver or household. **Note that 79.3% of assessments with findings of Substantiated or Services Needed were NOT assigned any Primary Contributory Factors.** Therefore, the data above may not be representative of the entire population. Repeat Assessment is defined as a child who received a finding of Substantiated or Services Needed with an identified Contributory Factor during fiscal year 2007-2008 and who was involved in another accepted report within 6 months of the substantiated report. The % reflects percentage of children with a given Contributory Factor who had a Repeat Assessment.

## Frontloading Services and Other Information for Fiscal Year 2007-2008



### Status of Data Collection and Reporting

- ➔ A total of **203** assessments were reported to the Central Registry.
- ➔ Of these, **176** assessments (**86.7%**) were reported through the web-based Multiple Response Database.
- ➔ So, **27** assessments (**13.3%**) reported to the Central Registry were NOT registered in the Multiple Response Database.
- ➔ Of the 176 assessments reported to both the Central Registry and the Multiple Response Database, **84.1%** included some information about MRS services that were needed, referred or provided.
- ➔ For the assessments with some MRS services information, **20.6%** of the reported services were referred and/or provided with no indication of the service being needed.

#### MRS Services Needed, Referred, and Provided

➔ Of the assessments with reported services, the top 5 identified service needs in the select county accounted for 65.2% of all identified service needs.

Top 5 needs, and how successfully they were referred or provided:

	#	% Referred	% Provided
Access community resources	110	98.2	94.5
Individual Counseling	60	95.0	71.7
Family Counseling	39	84.6	82.1
Case Planning/Case Management	32	84.4	59.4
Parenting Skills	25	76.0	56.0

#### Comparison of Blended v. Not Blended 210/215 Cases

	% of Children With a Repeat Assessment	Mean # of Minutes of Frontloaded Services
Blended	8.2	555.9
Team Blended	13.1	532.2
Not Blended	8.6	1028.1

Data combined for all counties in the comparison group. Includes all assessments with transfer information.