

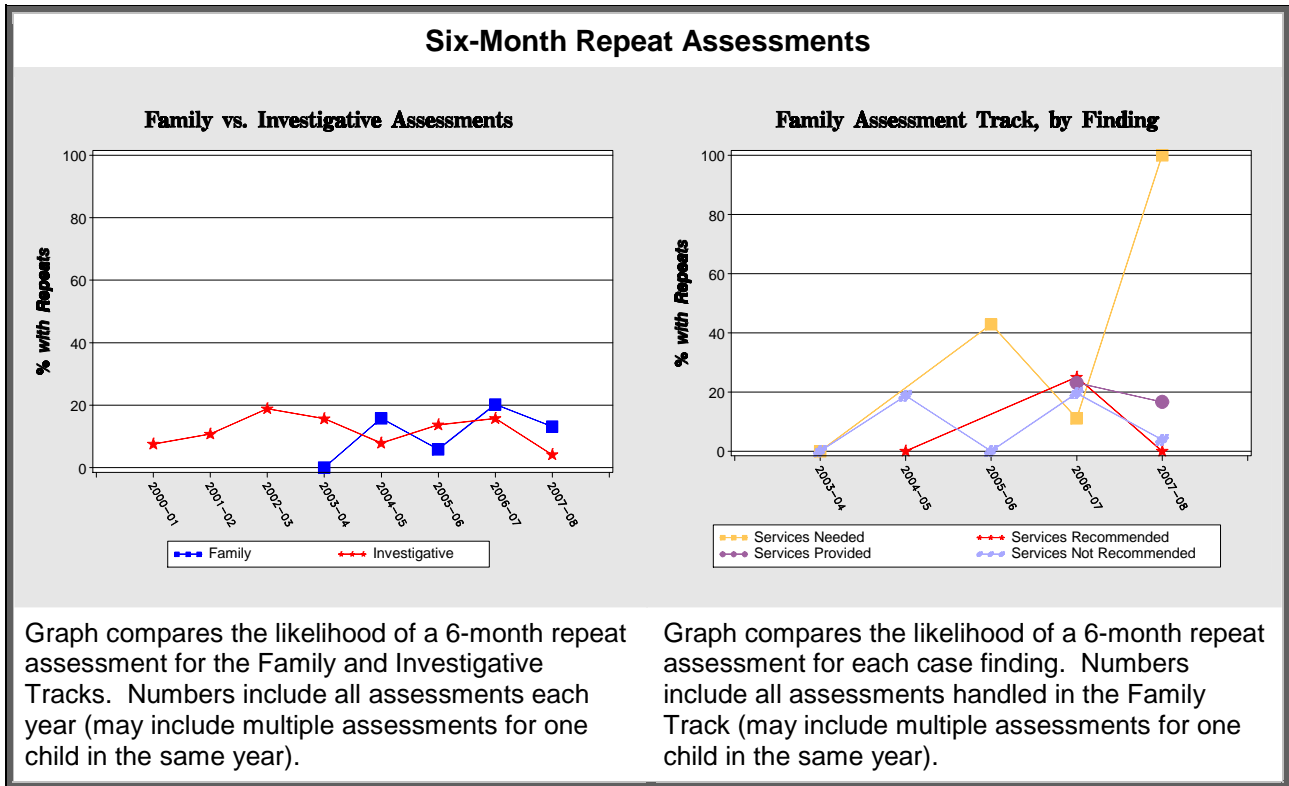
# Gates County 2008

## MRS Evaluation Fact Sheet

### Child Safety

	Fiscal Year				Mean Pre-MRS 00-01 thru 02-03		Mean MRS 05-06 thru 07-08		% Change	
	00-01	02-03	05-06	07-08	County	Comp Grp <sup>1</sup>	County	Comp Grp	County	Comp Grp
Rate of Assessments <sup>2</sup>	18.1	43.4	55.0	41.1	30.5	53.2	51.2	61.0	67.6	14.7
Rate of Substantiations <sup>3</sup>	2.5	9.5	14.7	5.2	5.5	14.0	11.0	14.8	101.6	6.0
Rate of Substantiated Abuse <sup>4</sup>	0.4	1.8	0.4	0.3	1.0	1.6	0.8	1.5	-15.1	-8.6
6 Month Repeat Assessment Rate <sup>5</sup>	8.0	14.3	12.4	9.3	11.4	14.4	14.2	15.4	24.1	6.6
6 Month Repeat Substantiation Rate <sup>6</sup>	0.0	7.7	4.9	20.0	2.6	6.2	8.3	7.0	223.4	13.1

Note: MRS was initiated in January 2004.



<sup>1</sup> County comparison groups were chosen based on county rates of assessments and child population. Counties in comparison group: Alexander, Ashe, Caswell, Duplin, Gates, Macon, Pasquotank, and Person.

<sup>2</sup> Rates are per 1,000 children residing in county.

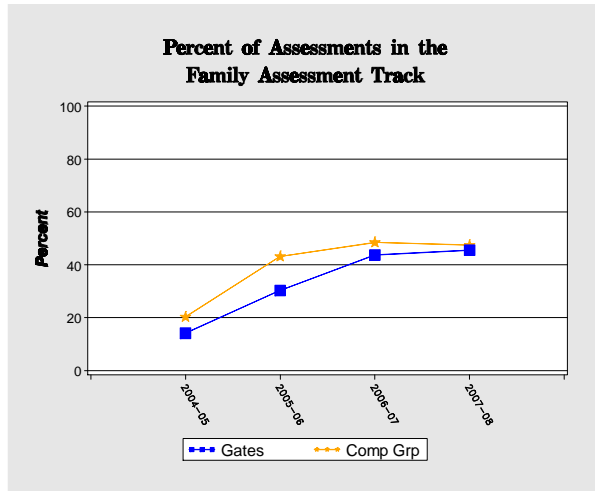
<sup>3</sup> Substantiations include findings of Services Needed.

<sup>4</sup> Abuse always includes substantiations of "Abuse and Neglect."

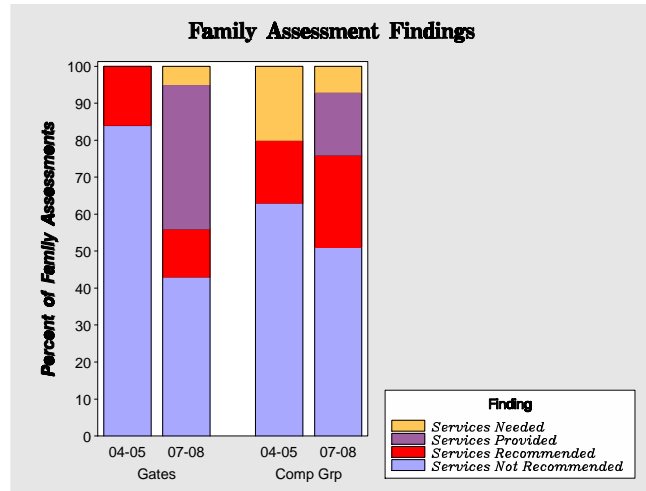
<sup>5</sup> Repeat Assessment is defined as a child who is involved in more than one accepted report within 6 months.

<sup>6</sup> Repeat Substantiation is defined as a child who has a substantiated report within 6 months of another substantiated report.

## Family Assessment Track



Percentage of assessments assigned to the Family Assessment Track. Graph compares select county to the average of the comparison counties from fiscal year 2004-2005 to 2007-2008.



Breakdown of findings within the Family Assessment Track for fiscal years 2004-2005 and 2007-2008 as compared to the average of the comparison counties.

## Timeliness of Response and Time to Case Decision

	Fiscal Year				Mean Pre-MRS 00-01 thru 02-03		Mean MRS 05-06 thru 07-08		% Change	
	00-01	02-03	05-06	07-08	County	Comp Grp	County	Comp Grp	County	Comp Grp
<b>% On-time Response<sup>7</sup></b>										
Overall	96.8	94.0	96.4	94.0	96.4	94.1	95.1	94.7	-1.3	0.6
Reports of Neglect	96.3	98.0	96.0	98.9	98.1	94.8	97.2	95.4	-0.9	0.5
Reports of Abuse	100.0	82.4	100.0	83.3	88.6	91.5	91.7	92.9	3.6	1.5
<b>% On-time Case Decision<sup>8</sup></b>										
Overall	74.2	62.7	18.8	66.4	67.3	77.1	47.5	66.7	-29.4	-13.5
Family Assessment Track	-	-	46.7	77.0	-	-	66.2	79.1	-	-
Investigative Track	-	-	8.5	57.5	-	-	36.5	54.4	-	-

<sup>7</sup> On-time Response is calculated as response within 24 hours for reports of Abuse, and within 72 hours for reports of Neglect.

<sup>8</sup> On-time Case Decision is calculated as decision made within 30 days for pre-MRS and Investigative Track assessments, and within 45 days for Family Track assessments.

## Primary Contributory Factors for Fiscal Year 2007-2008

Child Contributory Factors Total Children: 2	Children with this Factor	
	#	%
Alcohol Abuse	0	0.0
Behavior Problem	1	50.0
Drug Abuse	0	0.0
Emotionally Disturbed	1	50.0
Learning Disability	0	0.0
Mental Retardation	0	0.0
Physically Disabled	0	0.0
Visually or Hearing Impaired	0	0.0
Other Medical Condition	0	0.0

**Percent of Children with Repeat Assessment within Six Months**

Factor	Percent
Beh Prob	50.0
Emot Dist	50.0

Caregiver Contributory Factors Total Children: 9	Children with this Factor	
	#	%
Alcohol Abuse	1	11.1
Drug Abuse	6	66.7
Emotionally Disturbed	0	0.0
Lack of Child Development Knowledge	2	22.2
Learning Disability	0	0.0
Mental Retardation	0	0.0
Physically Disabled	0	0.0
Visually or Hearing Impaired	0	0.0
Other Medical Condition	0	0.0

**Percent of Children with Repeat Assessment within Six Months**

Factor	Percent
Alc Ab	0.0
Drug Ab	66.7
Lack Know	0.0

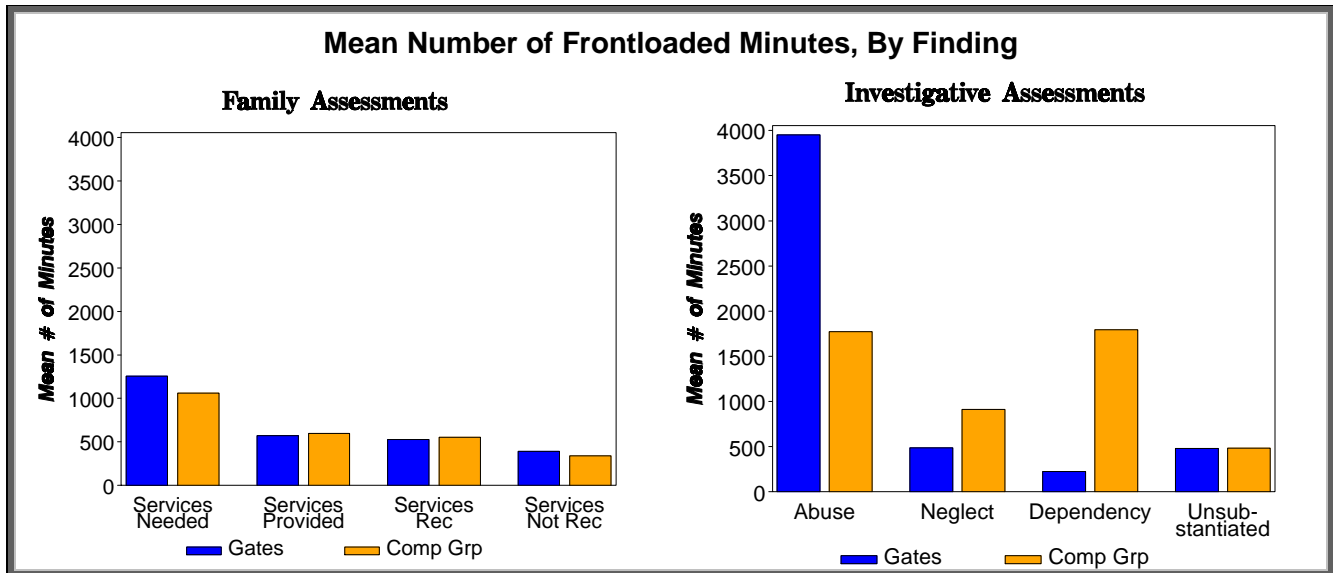
Household Contributory Factors Total Children: 8	Children with this Factor	
	#	%
Domestic Violence	5	62.5
Financial Problem	3	37.5
Inadequate Housing	0	0.0
Public Assistance	0	0.0

**Percent of Children with Repeat Assessment within Six Months**

Factor	Percent
Dom Viol	62.5
Fin Prob	37.5

Tables highlight the percentage of children with a finding of Substantiated or Services Needed with a Primary Contributory Factor recorded in 2007-2008. Contributory Factors are separated into categories depending on whether the factor is specific to the child, caregiver or household. **Note that 11.1% of assessments with findings of Substantiated or Services Needed were NOT assigned any Primary Contributory Factors.** Therefore, the data above may not be representative of the entire population. Repeat Assessment is defined as a child who received a finding of Substantiated or Services Needed with an identified Contributory Factor during fiscal year 2007-2008 and who was involved in another accepted report within 6 months of the substantiated report. The % reflects percentage of children with a given Contributory Factor who had a Repeat Assessment.

## Frontloading Services and Other Information for Fiscal Year 2007-2008



### Status of Data Collection and Reporting

- ➔ A total of **142** assessments were reported to the Central Registry.
- ➔ Of these, **69** assessments (**48.6%**) were reported through the web-based Multiple Response Database.
- ➔ So, **73** assessments (**51.4%**) reported to the Central Registry were NOT registered in the Multiple Response Database.
- ➔ Of the 69 assessments reported to both the Central Registry and the Multiple Response Database, **88.4%** included some information about MRS services that were needed, referred or provided.
- ➔ For the assessments with some MRS services information, **13.4%** of the reported services were referred and/or provided with no indication of the service being needed.

MRS Services Needed, Referred, and Provided			
➔ Of the assessments with reported services, the top 5 identified service needs in the select county accounted for 75.3% of all identified service needs.			
Top 5 needs, and how successfully they were referred or provided:			
	#	% Referred	% Provided
Other	37	73.0	86.5
Access community resources	9	100.0	100.0
Domestic Violence counseling for family	9	100.0	100.0
Family Counseling	9	100.0	100.0
Individual Counseling	9	66.7	66.7

Comparison of Blended v. Not Blended 210/215 Cases		
	% of Children With a Repeat Assessment	Mean # of Minutes of Frontloaded Services
Blended	10.0	806.8
Team Blended	16.7	603.3
Not Blended	21.6	749.2
Data combined for all counties in the comparison group. Includes all assessments with transfer information.		