

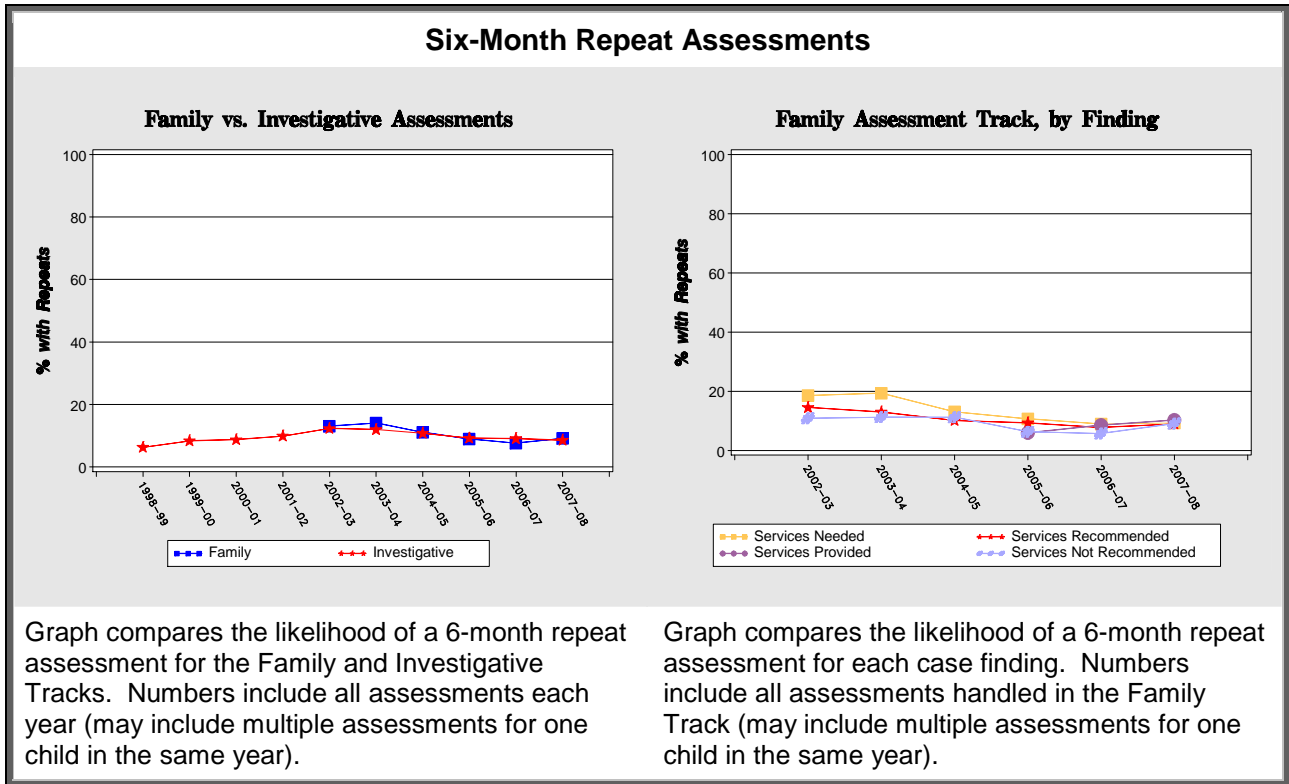
Mecklenburg County 2008

MRS Evaluation Fact Sheet

Child Safety

	Fiscal Year				Mean Pre-MRS 98-99 thru 00-01		Mean MRS 05-06 thru 07-08		% Change	
	98-99	00-01	05-06	07-08	County	10 Cnty	County	10 Cnty	County	10 Cnty
Rate of Assessments ¹	38.9	41.1	45.4	41.3	38.0	55.1	46.0	57.6	21.0	4.7
Rate of Substantiations ²	11.9	15.9	10.9	8.1	13.1	19.0	10.3	12.4	-21.8	-34.5
Rate of Substantiated Abuse ³	0.9	1.2	0.7	0.4	1.0	1.9	0.8	1.2	-22.3	-37.6
6 Month Repeat Assessment Rate ⁴	6.2	8.6	8.8	9.1	7.7	15.2	8.6	13.3	11.7	-12.7
6 Month Repeat Substantiation Rate ⁵	1.9	4.1	4.7	4.5	3.1	7.9	4.6	6.4	46.1	-18.8

Note: MRS was initiated in the 10 pilot counties in August 2002.



¹ Rates are per 1,000 children residing in county.

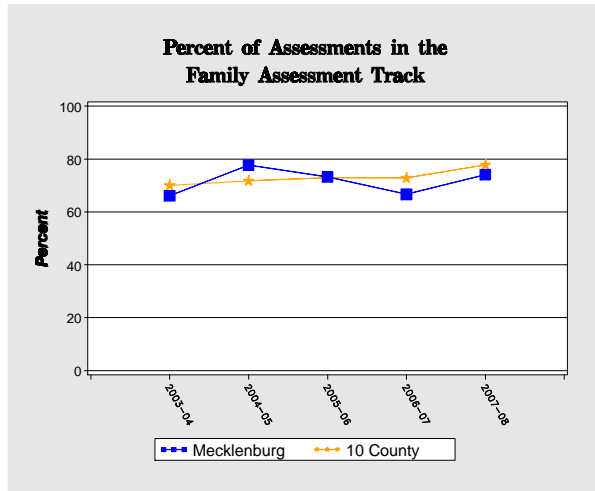
² Substantiations include findings of Services Needed.

³ Abuse always includes substantiations of "Abuse and Neglect."

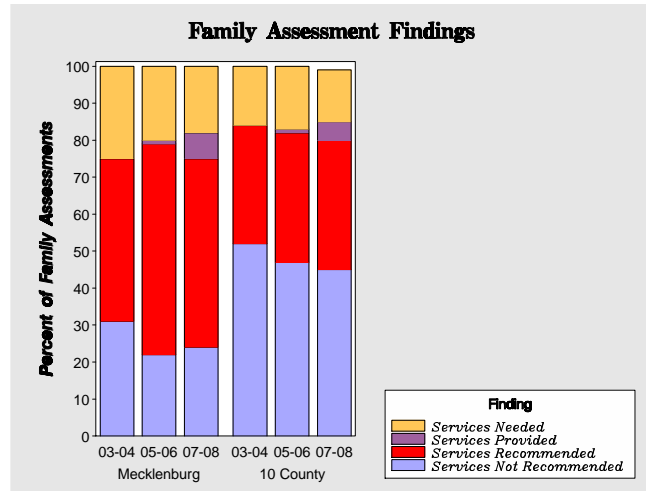
⁴ Repeat Assessment is defined as a child who is involved in more than one accepted report within 6 months.

⁵ Repeat Substantiation is defined as a child who has a substantiated report within 6 months of another substantiated report.

Family Assessment Track



Percentage of assessments assigned to the Family Assessment Track. Graph compares select county to the average of the 10 pilot counties from fiscal year 2003-2004 to 2007-2008.



Breakdown of findings within the Family Assessment Track for fiscal years 2003-2004, 2005-2006, and 2007-2008 as compared to the average of the 10 pilot counties.

Timeliness of Response and Time to Case Decision

	Fiscal Year				Mean Pre-MRS 98-99 thru 00-01		Mean MRS 05-06 thru 07-08		% Change	
	98-99	00-01	05-06	07-08	County	10 Cnty	County	10 Cnty	County	10 Cnty
% On-time Response⁶										
Overall	89.3	93.1	88.0	87.8	91.3	91.6	88.1	92.4	-3.5	0.8
Reports of Neglect	89.9	93.6	88.1	87.6	91.8	92.0	88.0	92.6	-4.1	0.7
Reports of Abuse	87.2	91.3	87.4	89.2	89.5	90.0	88.6	91.3	-1.0	1.4
% On-time Case Decision⁷										
Overall	45.9	56.0	44.2	42.7	53.5	71.4	41.2	60.5	-23.0	-15.2
Family Assessment Track	-	-	48.1	45.9	-	-	44.6	66.7	-	-
Investigative Track	-	-	34.3	34.6	-	-	33.4	44.0	-	-

⁶ On-time Response is calculated as response within 24 hours for reports of Abuse, and within 72 hours for reports of Neglect.

⁷ On-time Case Decision is calculated as decision made within 30 days for pre-MRS and Investigative Track assessments, and within 45 days for Family Track assessments.

Primary Contributory Factors for Fiscal Year 2007-2008

Child Contributory Factors Total Children: 327	Children with this Factor	
	#	%
Alcohol Abuse	5	1.5
Behavior Problem	163	49.8
Drug Abuse	21	6.4
Emotionally Disturbed	43	13.1
Learning Disability	20	6.1
Mental Retardation	10	3.1
Physically Disabled	14	4.3
Visually or Hearing Impaired	10	3.1
Other Medical Condition	41	12.5

Percent of Children with Repeat Assessment within Six Months

Factor	Percent
Beh Prob	10
Drug Ab	0
Emot Dist	19
Learn Dis	15
Other Med	5

Caregiver Contributory Factors Total Children: 459	Children with this Factor	
	#	%
Alcohol Abuse	90	19.6
Drug Abuse	202	44.0
Emotionally Disturbed	51	11.1
Lack of Child Development Knowledge	90	19.6
Learning Disability	1	0.2
Mental Retardation	6	1.3
Physically Disabled	5	1.1
Visually or Hearing Impaired	0	0.0
Other Medical Condition	23	5.0

Percent of Children with Repeat Assessment within Six Months

Factor	Percent
Alc Ab	5
Drug Ab	10
Emot Dist	5
Lack Know	5
Other Med	15

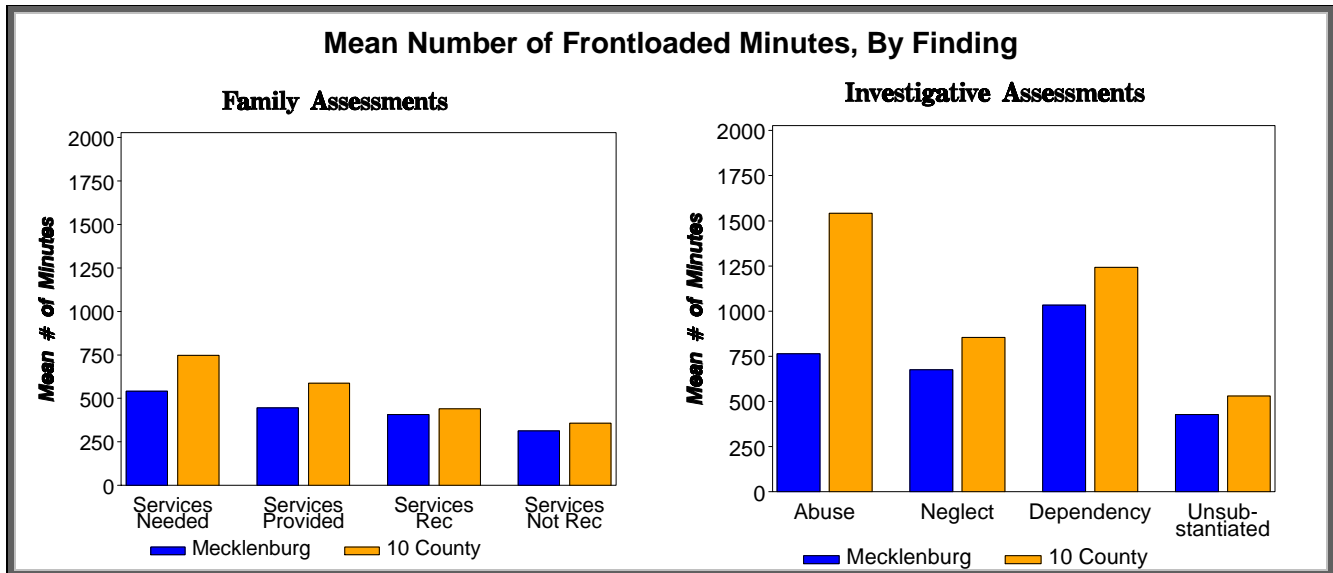
Household Contributory Factors Total Children: 528	Children with this Factor	
	#	%
Domestic Violence	288	54.5
Financial Problem	69	13.1
Inadequate Housing	87	16.5
Public Assistance	84	15.9

Percent of Children with Repeat Assessment within Six Months

Factor	Percent
Dom Viol	5
Fin Prob	5
Inad Hous	5
Pub Asst	2

Tables highlight the percentage of children with a finding of Substantiated or Services Needed with a Primary Contributory Factor recorded in 2007-2008. Contributory Factors are separated into categories depending on whether the factor is specific to the child, caregiver or household. **Note that 57.0% of assessments with findings of Substantiated or Services Needed were NOT assigned any Primary Contributory Factors.** Therefore, the data above may not be representative of the entire population. Repeat Assessment is defined as a child who received a finding of Substantiated or Services Needed with an identified Contributory Factor during fiscal year 2007-2008 and who was involved in another accepted report within 6 months of the substantiated report. The % reflects percentage of children with a given Contributory Factor who had a Repeat Assessment.

Frontloading Services and Other Information for Fiscal Year 2007-2008



Status of Data Collection and Reporting

- ➔ A total of **10726** assessments were reported to the Central Registry.
- ➔ Of these, **6754** assessments (**63.0%**) were reported through the web-based Multiple Response Database.
- ➔ So, **3972** assessments (**37.0%**) reported to the Central Registry were NOT registered in the Multiple Response Database.
- ➔ Of the 6754 assessments reported to both the Central Registry and the Multiple Response Database, **60.0%** included some information about MRS services that were needed, referred or provided.
- ➔ For the assessments with some MRS services information, **40.1%** of the reported services were referred and/or provided with no indication of the service being needed.

MRS Services Needed, Referred, and Provided			
➔ Of the assessments with reported services, the top 5 identified service needs in the select county accounted for 62.8% of all identified service needs.			
Top 5 needs, and how successfully they were referred or provided:			
	#	% Referred	% Provided
Access community resources	745	86.0	66.0
Parenting Skills	729	68.2	23.6
Domestic Violence counseling for family	499	79.8	34.9
Case Planning/Case Management	443	66.4	41.5
Substance Abuse Treatment	442	84.2	30.5

Comparison of Blended v. Not Blended 210/215 Cases		
	% of Children With a Repeat Assessment	Mean # of Minutes of Frontloaded Services
Blended	9.6	757.8
Team Blended	8.3	750.0
Not Blended	12.6	745.5
Data combined for all 10 pilot counties. Includes all assessments with transfer information.		