

# Mental Health in North Carolina: Challenges and Solutions

Thava Mahadevan<sup>1</sup>

Gary S. Cuddeback<sup>1</sup>

North Carolina Mental Health Task Force – workgroup meeting

November 18, 2015

- 
1. Center of Excellence in Community Mental Health, University of North Carolina at Chapel Hill

# Mental Health System

- The public mental health system has shrunk in past 50 years (**state hospitals provided both care and treatment!**) – now persons with SMI are impacted by a variety of policies and agencies over which mental health authorities have little control (**care and treatment are now separate!**)
  - Deinstitutionalization vs. trans-institutionalization



# Daily Number of Persons with Mental Illness in the Criminal Justice System

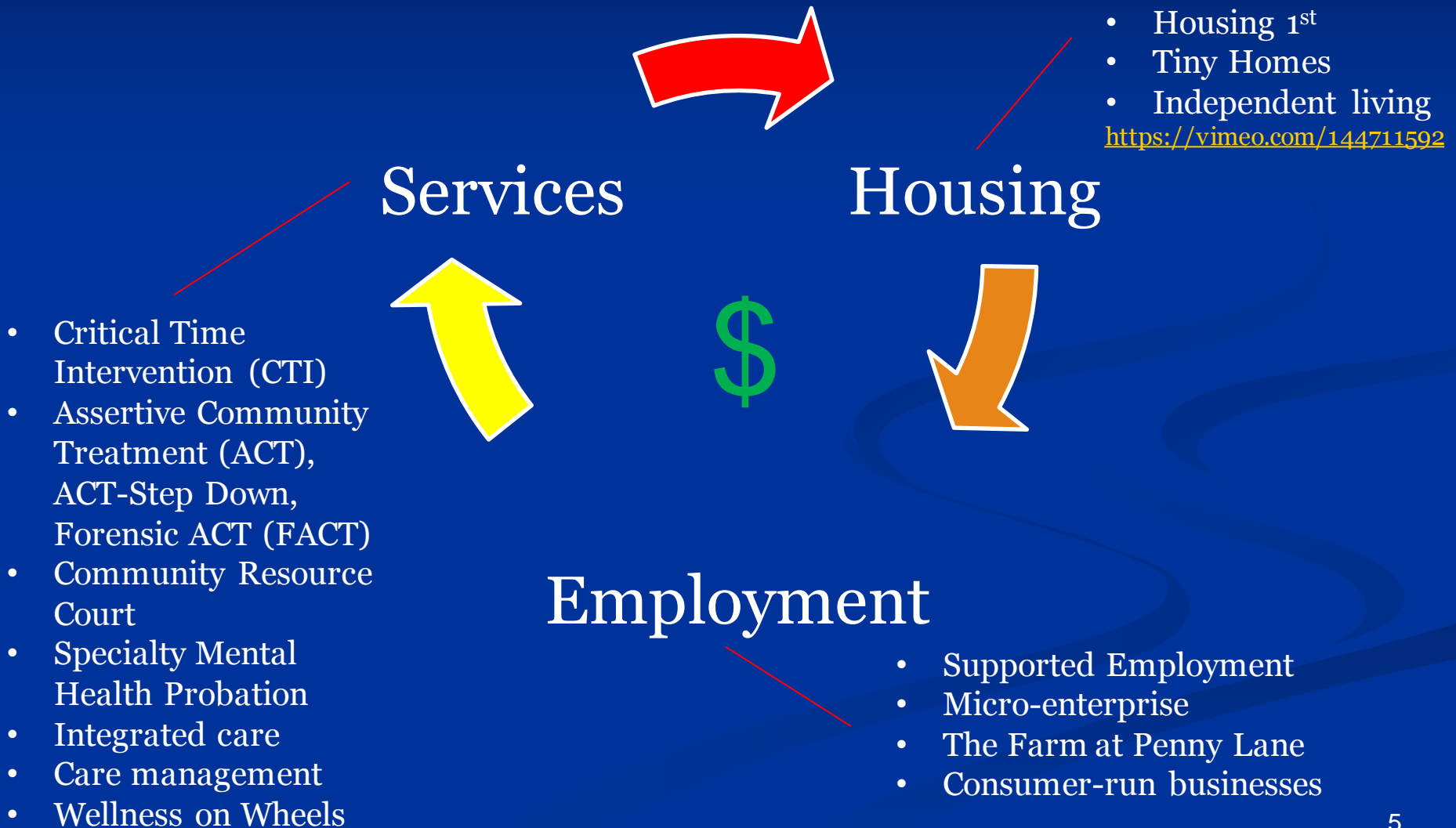
- 31% of female jail inmates and 15% of male inmates have mental illness (Steadman et al., 2009)
  - June 2009 ~ 130,140 SMI jail inmates ready for release
- 24% of female and 16% of male prisoners have mental illness (Ditton, 1999)
  - June 2009 ~ 267,994 SMI prisoners potentially ready for community reentry
- About 27% of 5m SMI probationers (Crilly et al., 2009)
  - ~ 1.35 million probationers!
- Approximately 54,000 in state hospitals!

	Prisons	Jails	Probation/Parole
# SMI	276,994	130,140	1,350,000

# Challenges

- Fragmentation of services
- Inflexible funding
- Workforce shortages
- Lack of safe and adequate housing
- Lack of employment / supported employment opportunities
- Poor community integration

# Solutions: Flexible Funding + Service Options



# What Can We Do?

- Mental Health ACOs?
  - Encourage state and/or MCOs to facilitate accountable care networks that include behavioral health, primary care, housing, employment, etc.
  - Bundled, flexible payment structure that incentivizes collaboration, not competition
  - No new money, but smarter use of money

# UNC Penny lane Campus

# Wellness Center at penny lane

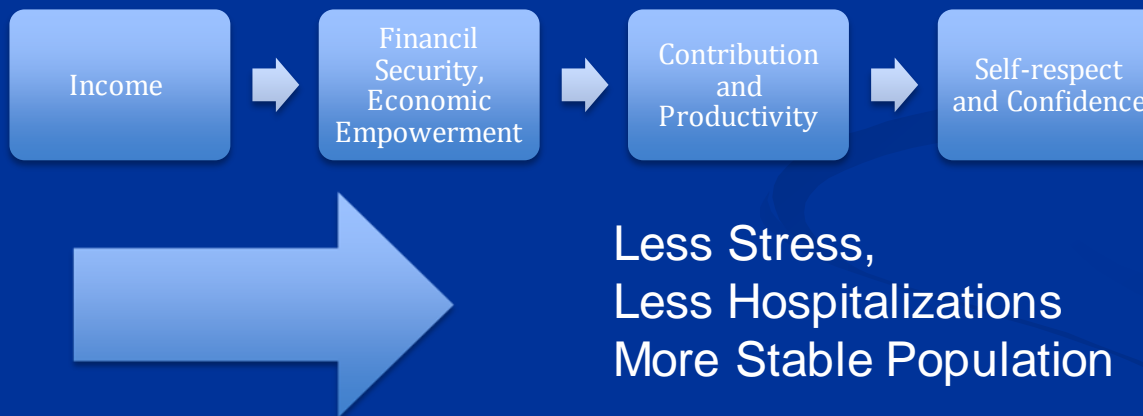






# Wellness center at Penny lane

- Entrepreneurship
- *Essential to recovery*



# Wellness center at Penny lane

