

Call Logics for SY 21-22 Student P-EBT

Contents

- Page 1A: Is my student eligible?
- Page 1B: Is my young child eligible?
- Page 2: When will we get the benefits?
- Page 3: How will we get the benefits?
- Page 4: I need a new card.
- Page 5: Why did we only get \$X in benefits?
- Page 6A: Eligible student didn't get benefits.
- Page 6B: Eligible child didn't get benefits.
- Page 7: Troubleshooting with reports
- Page 8: Caregiver changes
- Page 9: Foster care scenarios
- Page 10: Special Cases

Legend

General note for representative

Leading questions

Action for representative

Action for caller (parent/guardian)

Final outcome

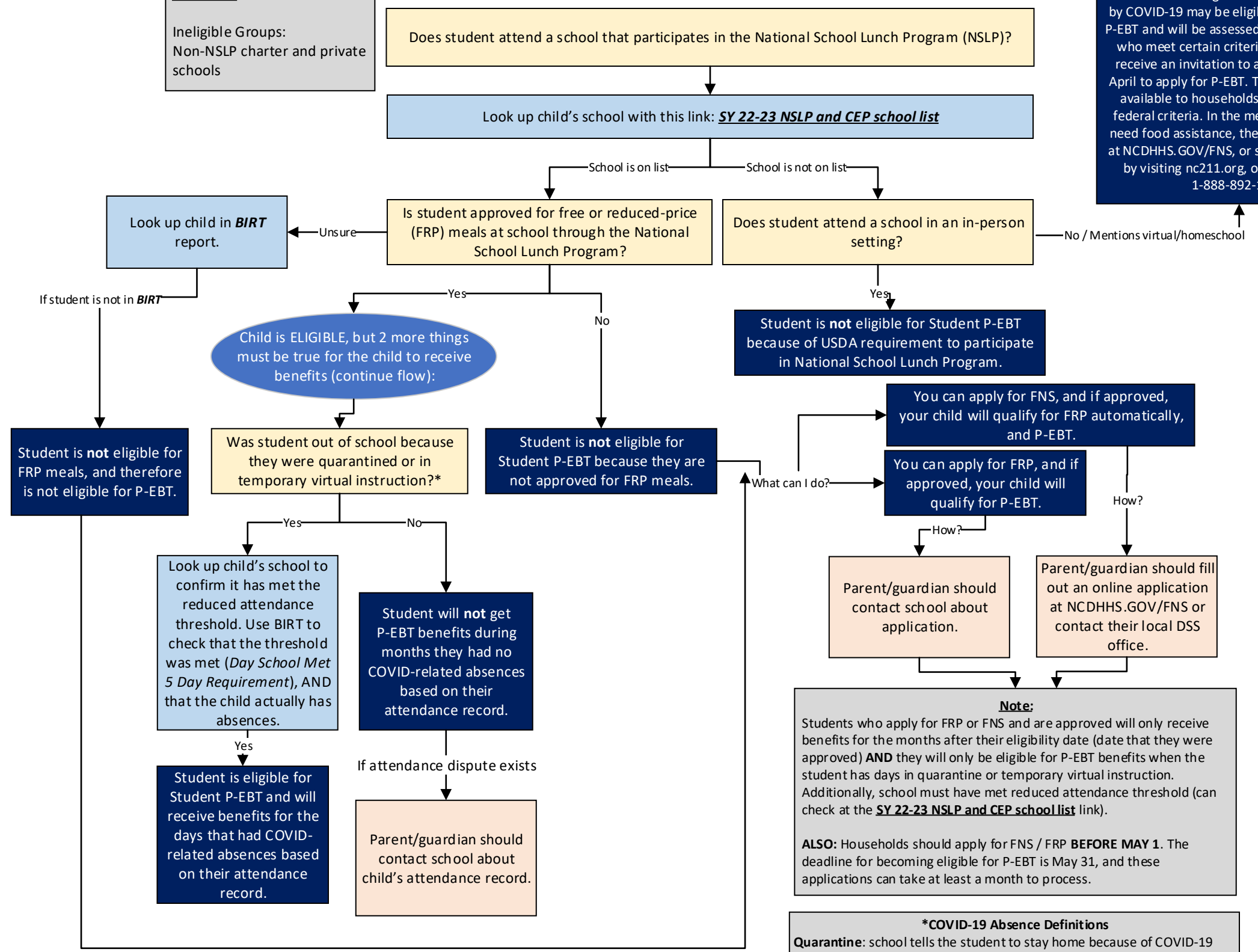
Redirect to another set of questions

Student P-EBT

Reminder
Ineligible Groups:
Non-NSLP charter and private schools

Monthly Eligibility
(ask for each student in the household)

This year only, children in fully virtual or homeschool settings who have been impacted by COVID-19 may be eligible to participate in P-EBT and will be assessed by the state. Those who meet certain criteria set by USDA will receive an invitation to apply in the mail in April to apply for P-EBT. This application isn't available to households who don't fit the federal criteria. In the meantime, if families need food assistance, they can apply for FNS at NCDHHS.GOV/FNS, or seek food resources by visiting nc211.org, or calling 2-1-1 or 1-888-892-1162.



****Note**
Any student in an NSLP school (even if they aren't P-EBT eligible) must be absent for 5+ consecutive days due to Covid as recorded by the school, and only then can students in the school begin to accrue P-EBT

Note:
Students who apply for FRP or FNS and are approved will only receive benefits for the months after their eligibility date (date that they were approved) AND they will only be eligible for P-EBT benefits when the student has days in quarantine or temporary virtual instruction. Additionally, school must have met reduced attendance threshold (can check at the [SY 22-23 NSLP and CEP school list](#) link).
ALSO: Households should apply for FNS / FRP **BEFORE MAY 1**. The deadline for becoming eligible for P-EBT is May 31, and these applications can take at least a month to process.

***COVID-19 Absence Definitions**
Quarantine: school tells the student to stay home because of COVID-19 related symptoms, illness, or exposure **and/or** parent/guardian informs the school about a student's COVID-19 related symptoms, illness, or exposure and the school approves the absence.
Temporary virtual instruction: student is enrolled in a physical school but is in virtual or remote learning for a temporary period of time because of a COVID-19 incident or reason.

(Child Care)
P-EBT for Young Children

Reminder: If a child turns 6 during the school year, they are eligible to continue receiving Child Care P-EBT **ONLY IF:**

- 1) they are still included in an active FNS case, **and**
- 2) aren't picked up in the Student P-EBT population

Look up child in **NCAFAST** then continue.

IMPORTANT:

If a child is a pre-K-12 student, eligibility rules of Student P-EBT will apply to them. The child will not receive Child Care P-EBT.

Redirect to "Is my student eligible?" or direct caller to online eligibility quiz on the P-EBT website.

Note

Child Care P-EBT benefit amounts are based on statewide numbers approved by the USDA. These amounts change month to month but are the same for everyone in North Carolina each month. The amounts for each month will be posted on the P-EBT website.

Monthly Eligibility
(ask for each child in the household)

Is the child 5 years old or younger as of September 1, 2022?

Is the child included in an active FNS case?

Child is **not** eligible for Child Care P-EBT because of USDA's requirement for child to be under the age of 6.

Redirect to "Is my student eligible?" to determine if child is eligible for student benefits.

Child is **not** eligible for Child Care P-EBT because of USDA's requirement for child to be included in an active FNS case.

Yes, households may apply for FNS at any time.
[NCDHHS.GOV/FNS](https://www.ncdhhs.gov/fns) provides more information on how to apply.

Child is eligible for Child Care P-EBT.

Reminder:

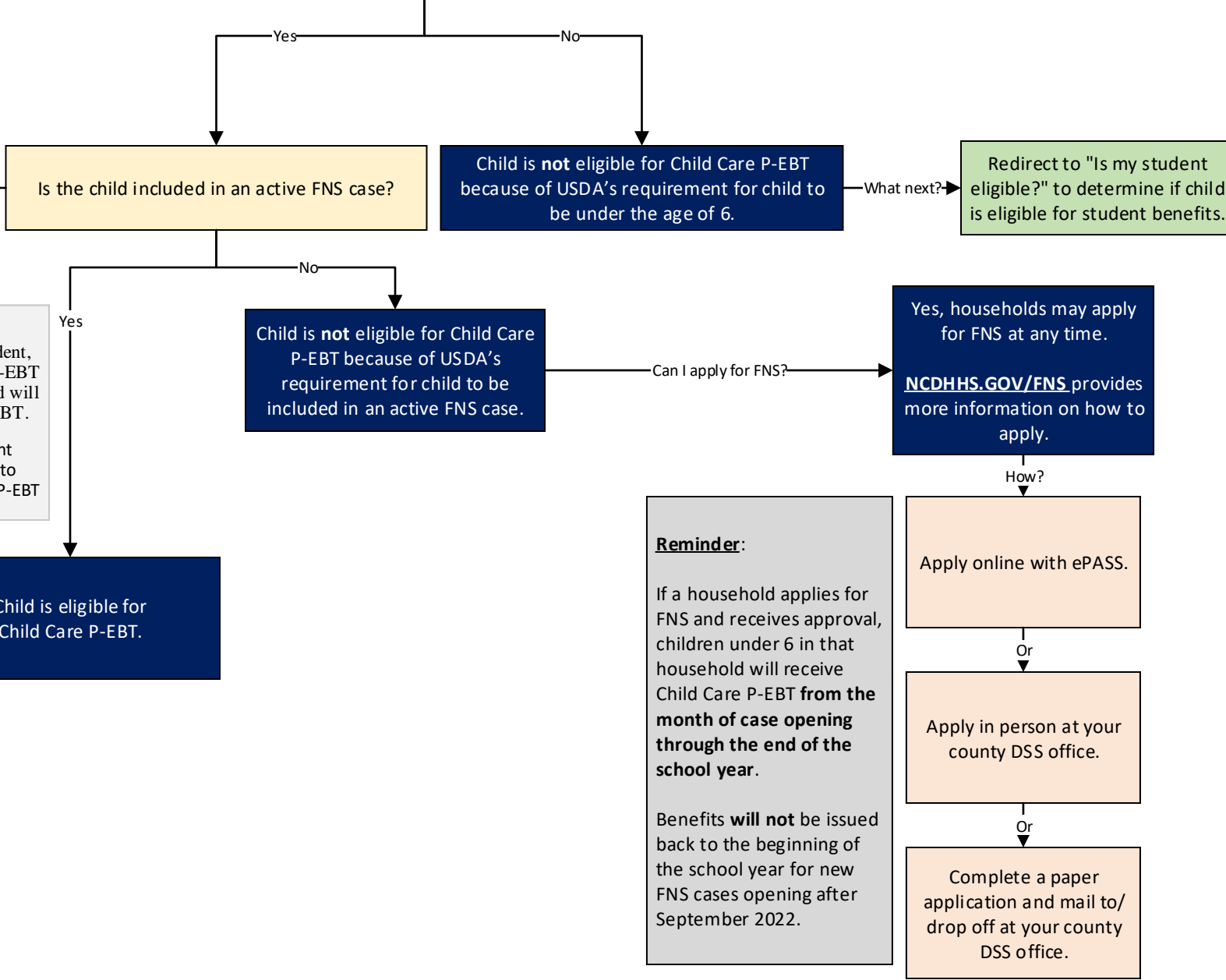
If a household applies for FNS and receives approval, children under 6 in that household will receive Child Care P-EBT **from the month of case opening through the end of the school year.**

Benefits **will not** be issued back to the beginning of the school year for new FNS cases opening after September 2022.

Apply online with ePASS.

Apply in person at your county DSS office.

Complete a paper application and mail to/drop off at your county DSS office.



Student & Child Care P-EBT

- Reminders**
- Households will not receive all months of P-EBT at once – **each month is a separate deposit.**
 - Students may get benefits in some months and not others depending on each student's attendance record.
 - Benefit availability after issuance will be staggered over 3 days.
 - Child Care - All children will receive a statewide benefit amount each month (but - this amount will likely change each month)

***Note**
If your children's benefits do not come in at the same time it is because student P-EBT benefits will be the first issued, then child care benefits will be issued next.

Note
Child Care P-EBT benefits will be added to the existing FNS EBT card.

When will we get the benefits?

Confirm caller and agent are referring to the same benefit month.
(actual benefit month vs. benefit issuance month)

Month is confirmed

Redirect to "Is my student eligible?" or "Is my child eligible" (depending on age) to confirm eligibility.

Eligibility is confirmed for given month

***Initial issuance**
(September 2022 – February 2023)

Regular monthly issuance cadence
(March 2023 and onward)

Student
There will be two student benefit issuances in March.
1: Mid-March (Sept - Jan) and 2: End of March (February).

Child under 6
Children under 6 will see their first benefit issuance at the end of March, covering September - February.

Child will receive benefits one month after the month that they are eligible.

Does student have existing P-EBT or FNS EBT card?

Yes
Benefits will be issued to an existing P-EBT or FNS EBT card.

Some households may be mailed a new P-EBT card with their benefits in 1-3 weeks.

No
You should receive the card with P-EBT benefits in the mail in 1-3 weeks.

Please be patient if your card has not arrived yet.

If extended period has passed

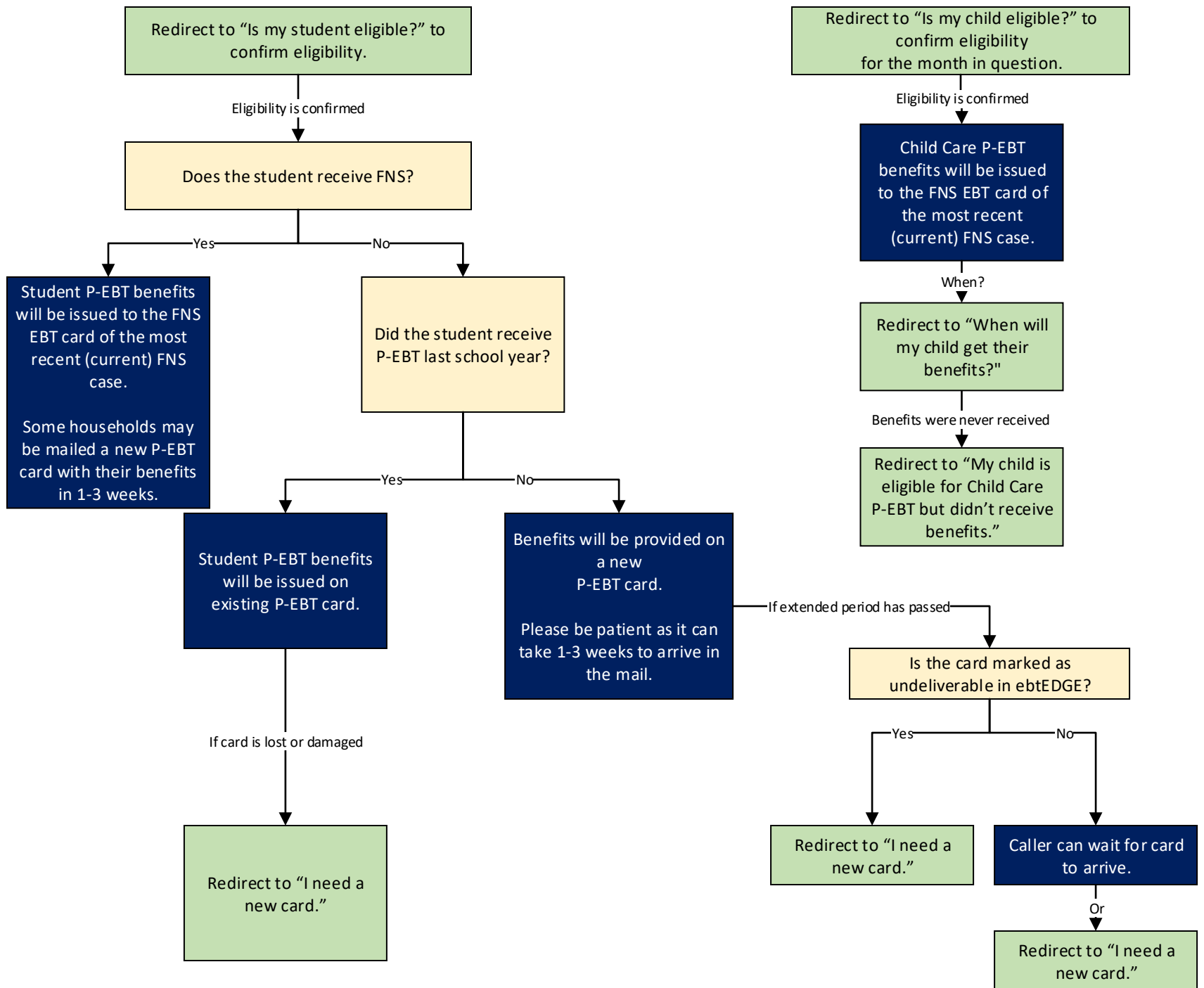
Is the card marked as undeliverable in ebtEDGE?

Yes
Redirect to "I need a new card."

No
Caller can wait for card to arrive.

Or
Redirect to "I need a new card."

How will we get the benefits?



“I need a new card.”

Was FNS EBT card or P-EBT card lost, stolen or damaged?

Yes

Initiate new card process.

Note
Inform caller that issuing a new card will cancel the old card and they will not be able to access benefits with the old card anymore.

P-EBT cards will take 1-3 weeks to arrive in the mail.

If extended period has passed

Is the card marked as undeliverable in ebtEDGE?

Yes

No

Redirect to “I need a new card.”

Caller can wait for card to arrive.

Or

Redirect to “I need a new card.”

Why did we only get \$X amount for benefits?

Confirm caller and agent are referring to the same benefit month.
(actual benefit month vs. benefit issuance month)

Info on issuance timing is needed

Month is confirmed

Month is confirmed

Student

Child

Redirect to "When will my child get their benefits?"

Confirm when the child's school met the reduced attendance threshold. Use the BIRT report (field: *Date School Met 5 Day Requirement*).

Redirect to "Is my child eligible?" to confirm eligibility for the month in question.

Confirmed

Eligibility is confirmed

The P-EBT benefit amount is based on the student's attendance record that is submitted by their school.
Student will receive \$8.18 for each eligible day that they are in quarantine and/or temporary virtual instruction.* (confirm caller understands definitions for these days)

Like last year, the benefit amount for young children (Child Care) is a set amount that all children across the state will receive (if they meet the monthly eligibility requirements).
This amount is subject to change each month and will be posted to NCDHHS.GOV/PEBT with each issuance.

If dispute still exists

If dispute still exists

Parent/guardian should contact their child's school to discuss their attendance record.

Inform caller that North Carolina is unable to change the monthly benefit amount. All eligible children will receive the same benefit amount for the month.

Why?

Inform caller that their child's school makes the final decision on attendance. The attendance records are used to calculate benefit amount.

What next?

If an error is found in the student's attendance record, their school will need to correct it. Any additional benefits the child is eligible for will be issued 1-2 months after it is corrected in the school's system.

***COVID-19 Absence Definitions**

Quarantine: school tells the student to stay home because of COVID-19 related symptoms, illness, or exposure **and/or** parent/guardian informs the school about a student's COVID-19 related symptoms, illness, or exposure and the school approves the absence.

Temporary virtual instruction: student is enrolled in a physical school but is in virtual or remote learning for a temporary period of time because of a COVID-19 incident or reason.

Prorated Month of May Note

The public health emergency ends on May 11th; therefore, P-EBT benefits cannot be accrued after this date for students or young children (child care).

The maximum number of benefit days in a month for students will be 9 days. Child Care benefits will be calculated by the state accordingly.

Students who are absent after May 11th will not receive P-EBT benefits, because they cannot accrue additional benefits after the public health emergency has ended.

My child is eligible for Student P-EBT but didn't receive benefits.

Confirm caller and agent are referring to the same benefit month.
(actual benefit month vs. benefit issuance month)

Month is confirmed

Redirect to "Is my student eligible?" to confirm eligibility.

Eligibility is confirmed

Does caller have an existing P-EBT or FNS EBT card?

Yes

No

Check to see if P-EBT benefits were deposited
for the month in question.

Benefits will be issued on a new P-EBT
card that will arrive in the mail
1-3 weeks after issuance.
Please allow adequate time for the
card with benefits to be mailed.

Benefits were deposited

Benefits were not deposited

For future reference, you may check the
deposits and balance for your P-EBT or FNS
EBT card by visiting www.ebtedge.com, using
the ebtEDGE mobile app, by texting **BAL** to
4225 (instructions to register phone are in the
P-EBT FAQs), or by calling the number on the
back of the EBT card **1-888-622-7328**.

Visit www.ncdhhs.gov/pebt for instructions on
how to do this in frequently asked questions.

Look student up in the
Student BIRT Report
and/or ebtEDGE and use to
troubleshoot reasons student did
not get benefits.

"Troubleshooting with reports"

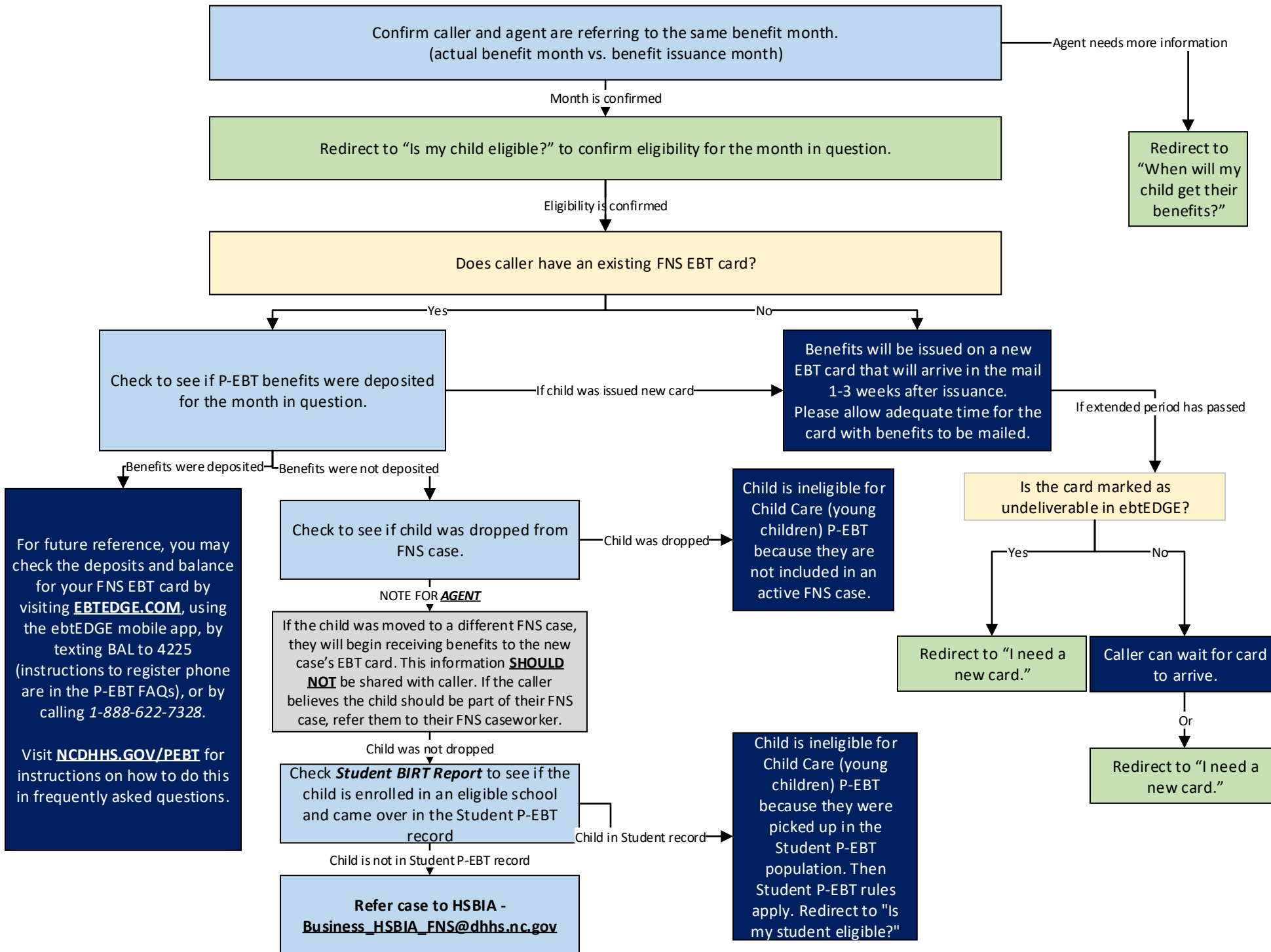
Unable to find student

Encourage caller to contact their child's School
Nutrition Office to confirm their free or
reduced-price meals eligibility, or to apply.

Or

AFTER using the "Troubleshooting with
reports", if there is no reason found, redirect
caller to the DPI P-EBT phone line at **984-236-
2976** for troubleshooting data related
problems.

My child is eligible for Child Care (young children) P-EBT but didn't receive benefits.



Troubleshooting Using Report (Students)

****Note**
If all troubleshooting avenues are exhausted, and it appears it is a data-related problem that could be resolved by DPI, the call rep can provide caller with the DPI phone line: **984-236-2976**

Redirect to "Is my student eligible?" to confirm eligibility.

Eligibility is confirmed

Confirm caller and agent are referring to the same benefit month (actual benefit month vs. benefit issuance month).

Month is confirmed

Verify student has not already received benefits for the month using **BIRT Report** and/or ebtEDGE.

If benefits were issued but never received a P-EBT card (for an extended period of time)

Student did not receive benefits

Is the card marked as undeliverable in ebtEDGE?

Yes

No

Redirect to "I need a new card."

Caller can wait for card to arrive.

Or

Redirect to "I need a new card."

Parent/guardian should contact the School Nutrition Office in their school district.

Has FRP denial date

Parent/guardian should contact their child's school to verify their information.

Has enrollment exit date

Attendance data missing

This is a federal requirement that cannot be changed, and benefits cannot be accrued or issued before this threshold is met. However, the caller can check monthly to see if their school has met the threshold using the school search tool on the P-EBT website.

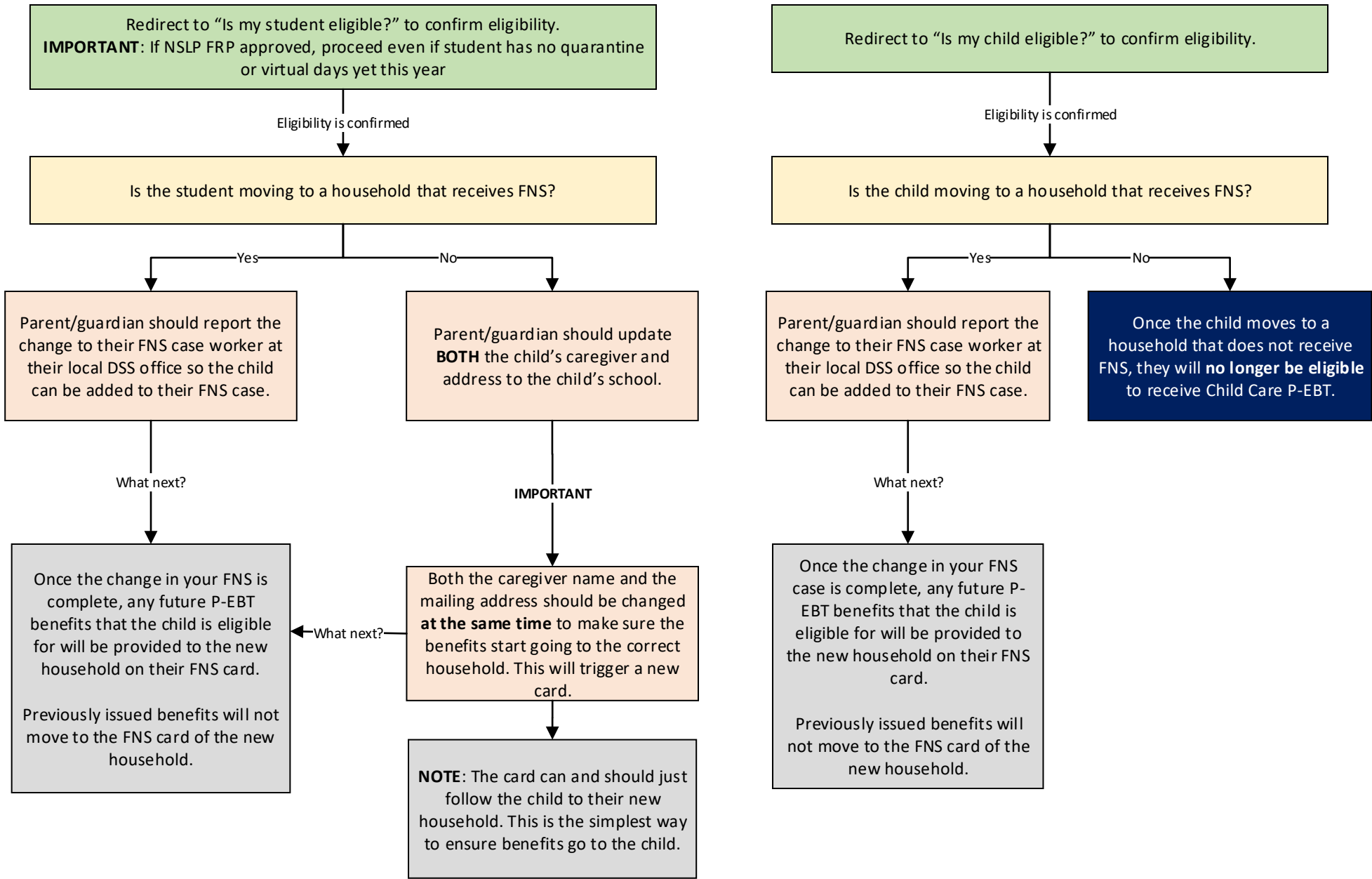
Student attendance record shows no virtual or quarantine days

School has not met the threshold for reduced attendance because of COVID

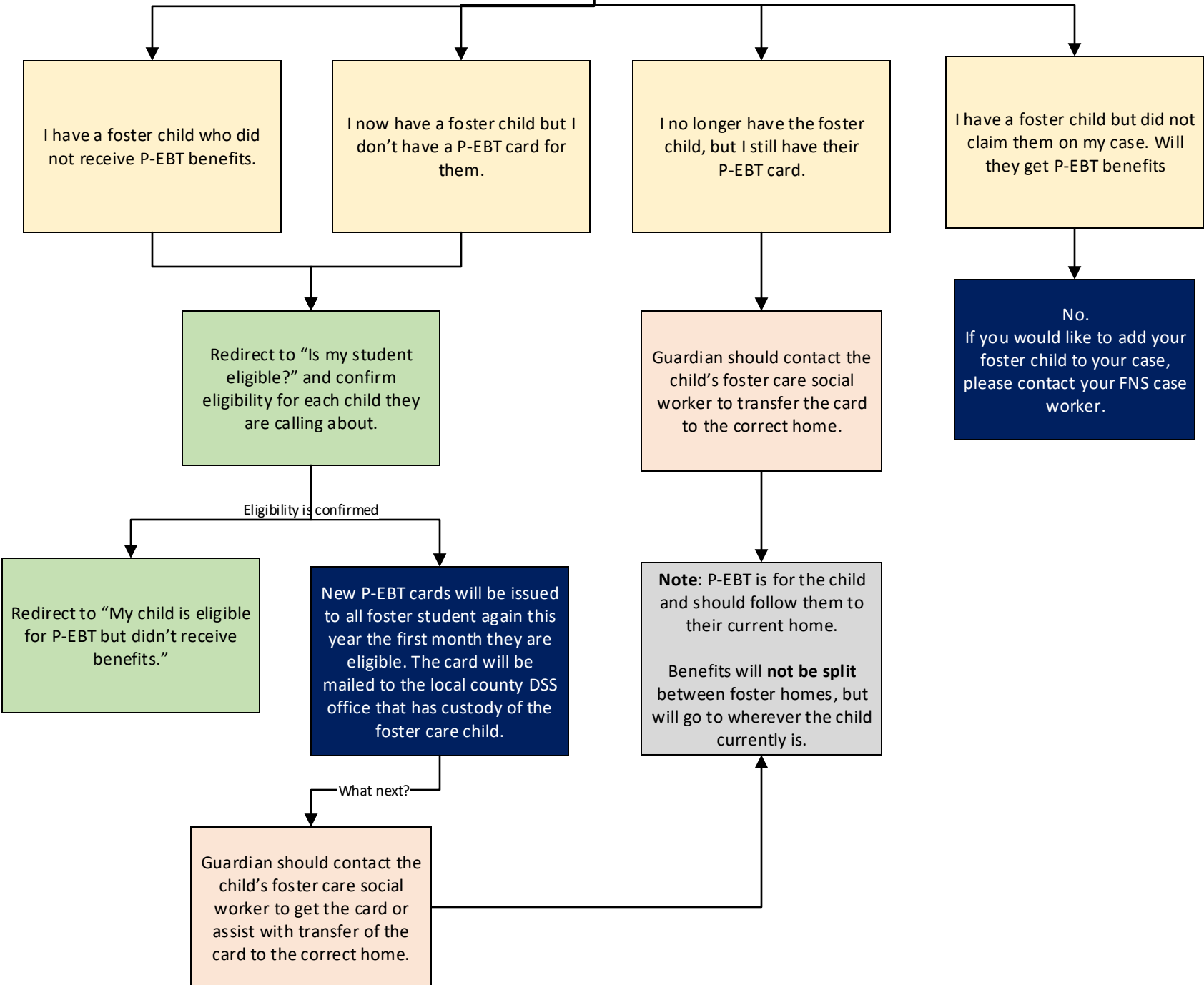
Refer case to HSBIA - Business_HSBIA_FNS@dhhs.nc.gov

Benefits went to an FNS case that the child is not part of.

My child changed caregivers.



Foster care scenarios



What if my child is in a hybrid school?

Hybrid schools are not considered virtual academies. The school can still qualify to be a NSLP.

Does student attend a school that participates in the National School Lunch Program (NSLP)?

Look up child's school with this link: [**SY 22-23 NSLP and CEP school list**](#)

Redirect to "Is my student eligible?" to confirm eligibility.

How does a school meet the attendance requirement?

A student at your child's school needs to have been absent for 5+ consecutive days due to COVID-19. This student can be any child in the school that participates in the NSLP free or reduce-price meal program. Once, this happens, the school is eligible for the whole school year. This is a rule set by the USDA that North Carolina cannot change.

Yes

Has the school registered that they met the attendance threshold?

Yes

Redirect to "Is my student eligible?" to confirm eligibility.