

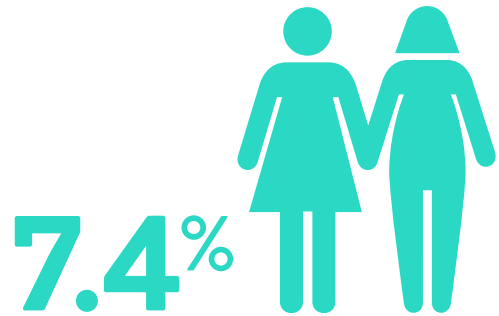
LGBT OLDER ADULTS AND DEMENTIA

Age is the greatest risk factor for Alzheimer's disease

An estimated **2.7million** LGBT people are over age 50

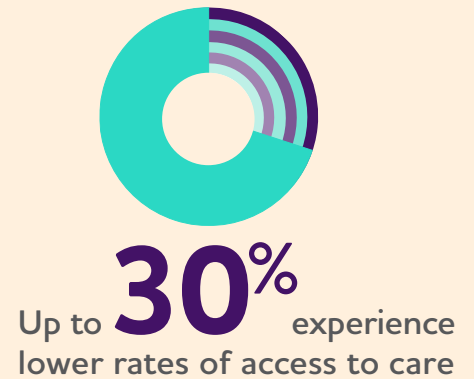
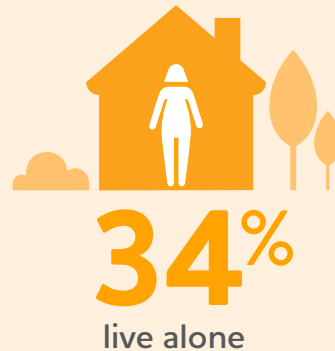
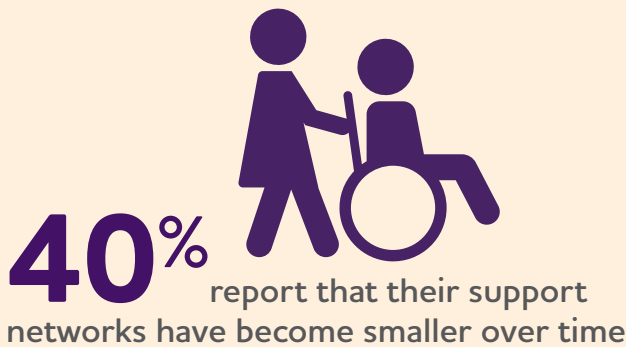
LGBT people have greater health disparities, many of which are risk factors for dementia, including:

- Depression
- Obesity
- Alcohol and tobacco
- Lower rates of preventive screenings
- Cardiovascular disease
- HIV/AIDS



7.4% of the lesbian, gay and bisexual older adult population is living with dementia

LGBT adults living with dementia face unique challenges in accessing support:



Alzheimer's is the most expensive disease in the nation

51% of LGBT older people report being very concerned about having enough money to live on



Fear of discrimination can delay access to care

40% say their health care providers don't know their sexual orientation



alzheimer's association®

sage | Advocacy & Services for LGBT Elders
We refuse to be invisible

Sources

- Alzheimer's Association and SAGE, Issues Brief: LGBT and Dementia
- Jason Flatt, Ph.D., MPH, et al. Dementia Prevalence Among Sexual Minority Older Adults. Funder: U.S. National Institute on Aging.
- Hanneke Rhodius-Meester, M.D., et al. Median Survival in Memory Clinic Cohort Is Short, Even in Young Onset Dementia. Funders: Alzheimer Nederland; Stichting Dioraphte.
- Yvonne Leung, Ph.D., et al. 100 Years and Beyond: Investigating the Prevalence of Dementia in Centenarians and Near Centenarians from 17 Population-Based Studies. Funder: The Dementia Momentum Initiative.

Visit alz.org for additional information, support and resources.