

# LME/MCO/TP Dashboard

Posted 11/30/24

Alliance

Partners

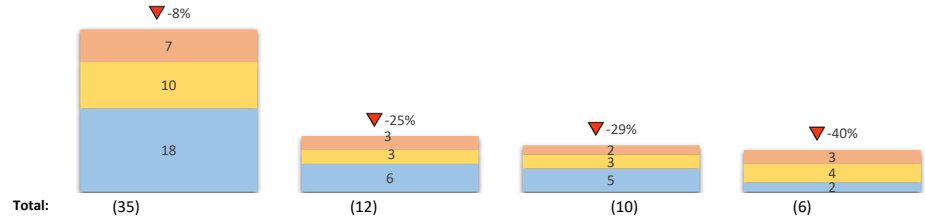
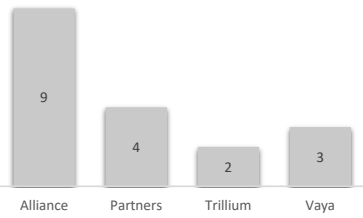
Trillium

Vaya

## Medicaid, Children in ED & DSS Settings (May 2024 - Jul 2024)

Per 10,000 Children w Medicaid

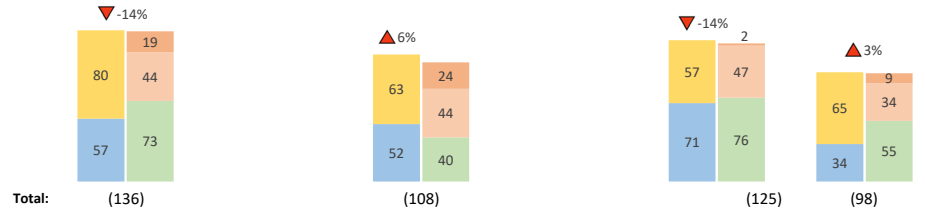
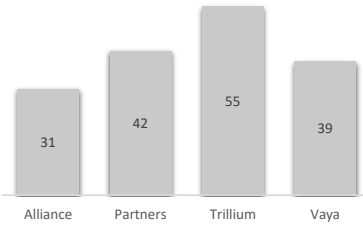
EDs, Not DSS Involved | EDs, DSS Involved | DSS Offices



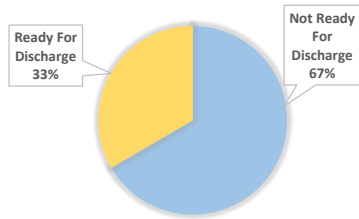
## Medicaid, Children in PRTFs (Jan 2024 - Mar 2024)

Per 10,000 Children w Medicaid

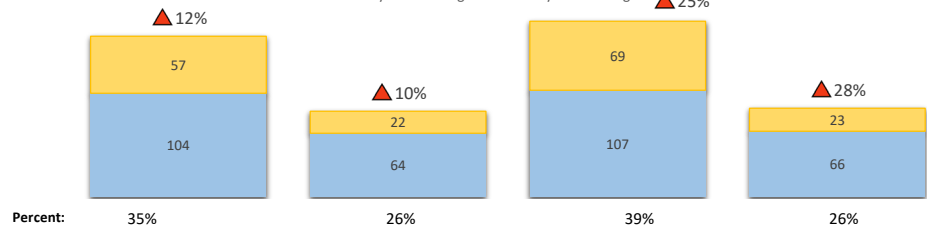
Not DSS Involved | DSS Involved | In State | Out of State-NC Border Facility | Out of State



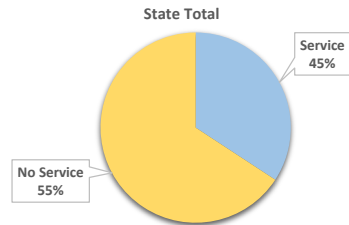
## Consumers in State Psych Hospitals Ready for Discharge (Feb 2024 - Apr 2024)



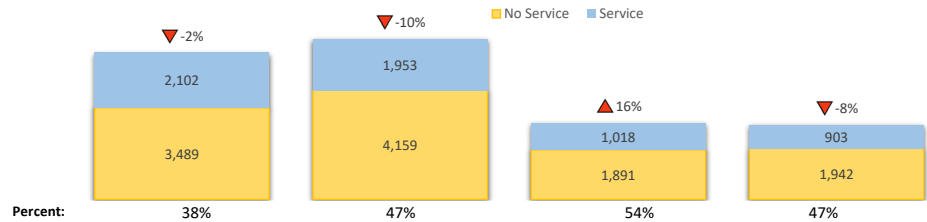
Not Ready For Discharge | Ready for Discharge



## People on Innovations Waitlist Receiving Any Medicaid or State BH/IDD Service (Nov 2023 - Jan 2023)



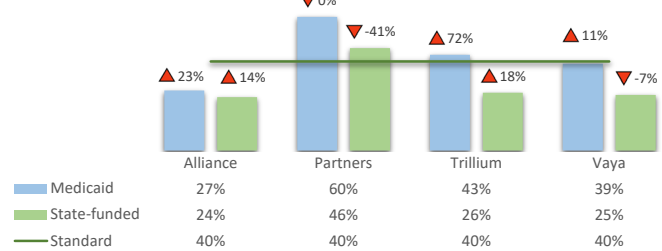
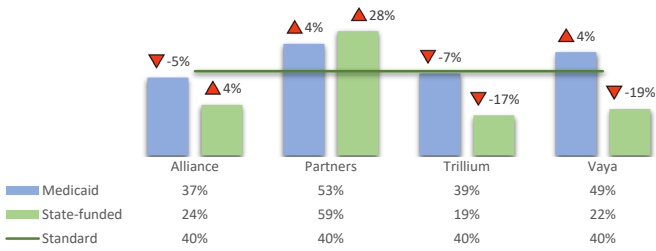
No Service | Service



## Follow-up Within 7 Days After Inpatient Discharge (SFY24 Q1)

Mental Health

SUD



\*Arrow indicators compare this month's data to last month's data. If on top, applies to whole bar. If within a section, applies to that section.

Medicaid, Children in Inappropriate Crisis Settings: 12 week rolling average (LMEMCO self report for ED data; DSS office report for DSS office boarding data); Directional arrow down shows improvement.  
 Medicaid, Children in PRTFs: 3 month rolling avg (NC Tracks & EPS encounters pulled by NC Medicaid); Directional arrow down shows improvement. Partners data is unavailable due to issues with billing provider information.  
 Consumers in State Psych Hospitals Ready for Discharge: 3 month rolling avg of consumers deemed ready for discharge by medical personnel (DSOHF data); Directional arrow down shows improvement.  
 People on Innovations Waitlist Receiving Any Service: 3 month rolling avg of service in each month during measurement period (NC Tracks claims & EPS encounters pulled by DMHDDSUS QM); Directional arrow up shows improvement.  
 Follow-up Within 7 Days After Inpatient Discharge: Quarterly average with 40% benchmark (paid NC Tracks claims & EPS encounters by NC Medicaid/DMHDDSAS data); Directional arrow up shows improvement.