



North Carolina Medication Assistance Program

2024 Profile (Data from State Fiscal Year 2024)

Grant Facts

\$2.1M

Grant funding appropriated from the General Assembly

15

Health care professional jobs supported through grant funds

23,006

Patients served

93%

Percentage of patients served that were uninsured

92,824

Prescription drugs received through The Pharmacy Connection (TPC)

\$190M*

Value of medications leveraged

*Based on average wholesale prices from TPC

10%

Of prescriptions were anti-psychotic, anti-depressant, and other mental health drugs

119

Active MAP sites using TPC software licenses

\$72.50

Average contribution of state funds per patient (each patient averages about 5 prescription drugs each month)

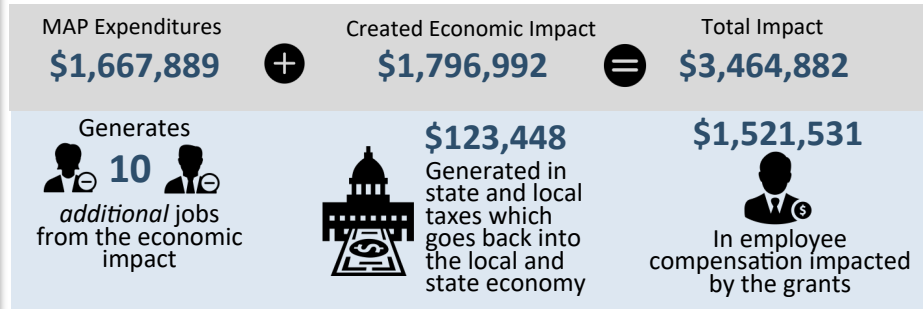
Overview The Medication Assistance Program (MAP) is a safety net for uninsured, low-income individuals in the state. During SFY 2024, 93% of the patients served were uninsured and 84% of patients were at or below 100% of the Federal Poverty Level. MAP provides access to free prescription drugs available through pharmaceutical manufacturers to patients who cannot afford them. This service is currently offered through 119 sites across the state in facilities such as rural health centers, federally qualified health centers, and community and faith-based organizations.

Importance and Improvements

Since the creation of the program in 2003, \$3,054,210,133 in free medications have been accessed for patients who could not afford them. For SFY 2024, the value of medications leveraged for the program totaled \$190 million for 23,006 patients.

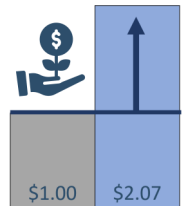
Return On Investment and Economic Impact

Source: IMPLAN



Each MAP grant dollar has a total economic impact of

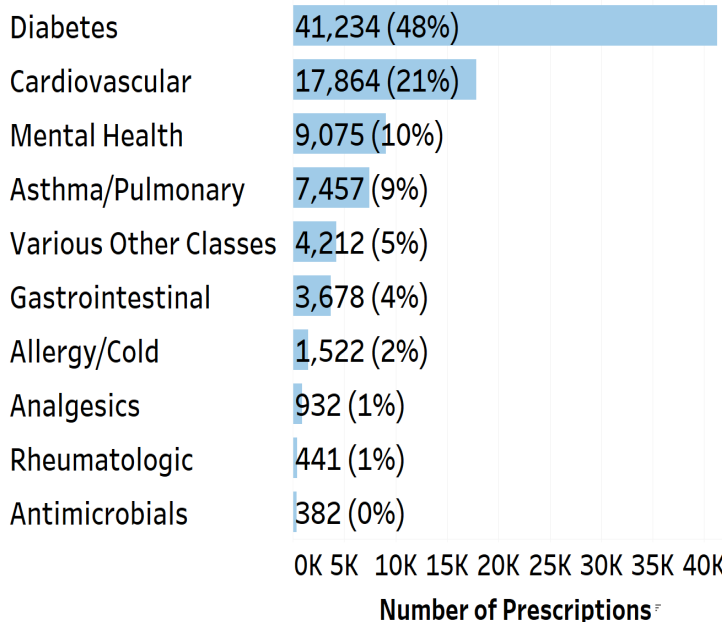
\$2.07



*Economic impact is estimated to be much greater because improved health outcomes can lead to fewer missed work days, reduced health care costs, and reduced premature morbidity and mortality. Some expenses such as out of state purchases, overhead, and rollover payments are not captured for ROI and economic impact.

Medication Distribution

Values for table below are pulled from TPC



MedAssist: NC MedAssist is a central fill pharmacy purchasing prescription drugs for patients who meet certain income criteria. The NC General Assembly appropriates funds, administered by ORH, directly to MedAssist. In SFY 24 \$600,000 was appropriated.

9,925

Patients served

154,981

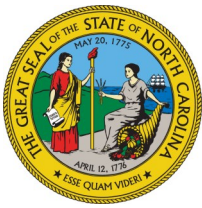
Prescriptions filled based on 90-day supply

\$54,407,825

Value of prescriptions filled (AWP)

*NC MedAssist values are self-reported

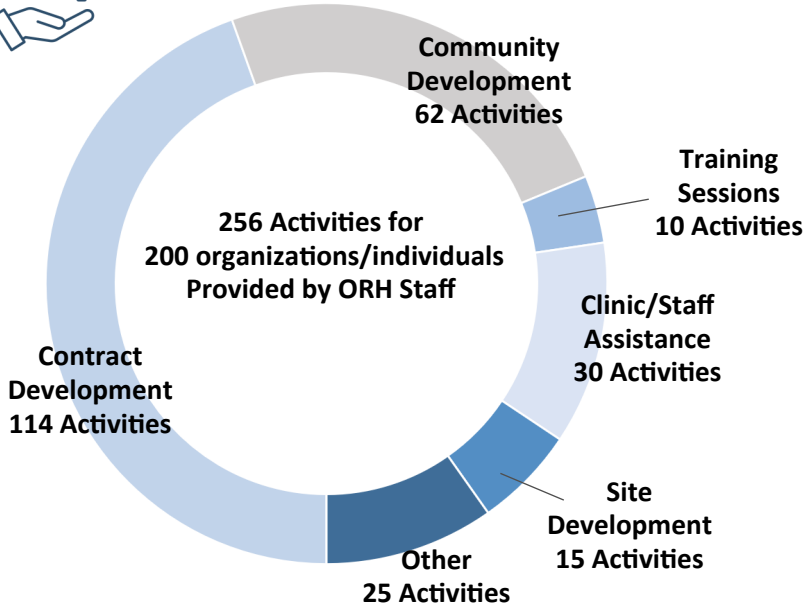




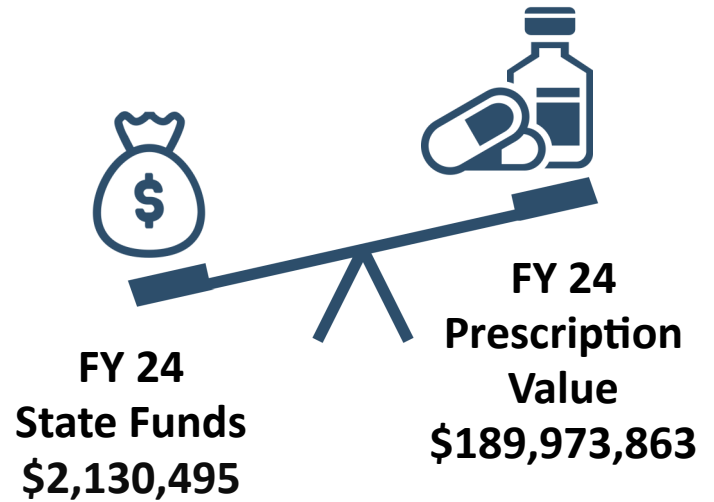
North Carolina Medication Assistance Program

2024 Profile (Data from State Fiscal Year 2024)

Technical Assistance

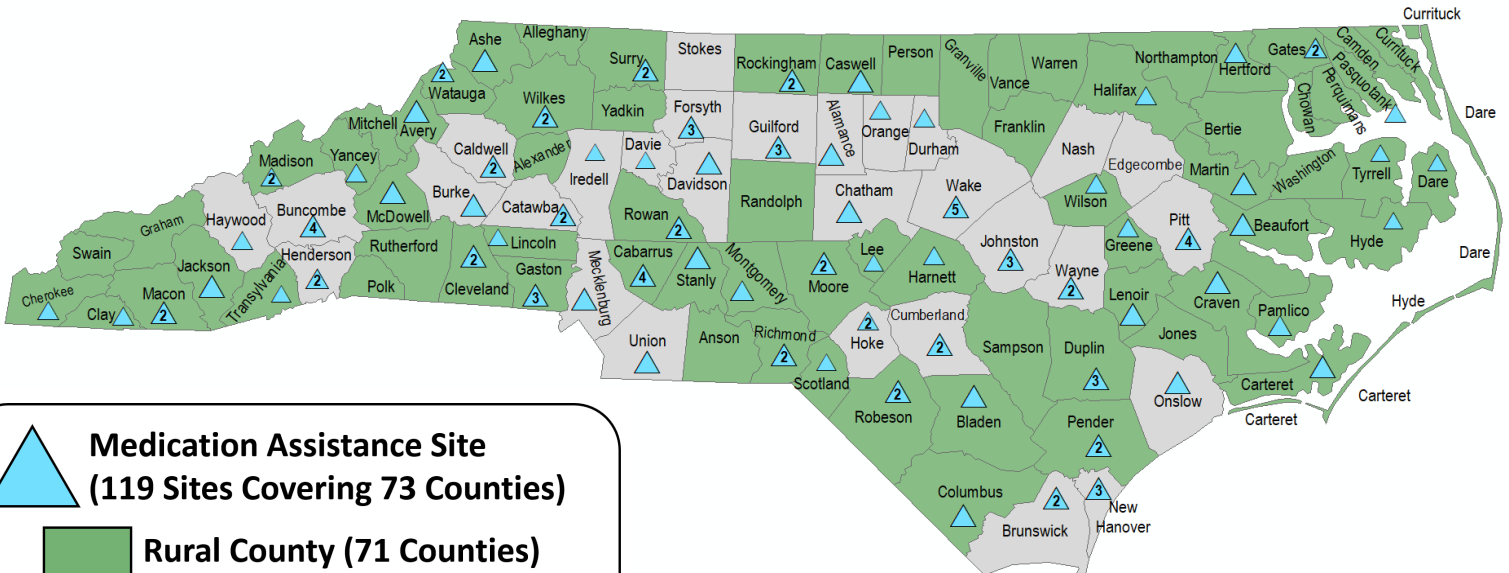


Program Leverage



Program Reach

119 Sites Supported	73 Total Counties Covered	47 Rural Counties Covered
-------------------------------	-------------------------------------	-------------------------------------



Medication Assistance Site
(119 Sites Covering 73 Counties)

Rural County (71 Counties)

Urban County (29 Counties)

*Number inside of symbols indicate number of sites

If you have further questions, please contact:
Nicole Fields-Pierre, Community Health Program Manager
Phone: 919-527-6457
Nicole.Fields-Pierre@dhs.nc.gov

